

E-Designs Plans Inc.

A western Canadian company from Alberta that designs and ships home plans all across Canada, the US, and Overseas.

For more information about this plan contact the designer at: info@edesignsplans.ca.

Plan #: 2014827 Front Elevation

www.edesignsplans.ca

Call Us 1-855-675-1800



Rear Elevation

Bungalow with 2-Car Garage

1442 Sq. Ft. Main Floor

Width: 44'-0"
 Depth: 60'-8" (plus deck)
 Bedrooms: 3
 Bathrooms: 3
 Main Floor Laundry: Yes
 Walk-in Pantry: No
 Office/Den: Yes

Plan #: 2014827

Exterior Walls: 2x6 x 8 Ft. (Main Floor)
 Foundation: 9' Concrete Wall
 (Other Foundations Available)
 Special Ceilings: Vaulted Kitchen/Dining/Living Rm
 Fireplace: Yes
 Deck(s): Rear (Partially Covered)
 Veranda: Yes
 Attached Garage: Yes (2-Car with 10'x8' Doors)
 Finished Basement Plan: Yes

Bungalow with 2-Car Garage. The 1442 sq. ft. bungalow has great curb appeal with its many gable roof lines, brick trim, and staggered garage doors. This plan is very unique. Access from the garage is into a walk-through laundry room with plenty of closet space. The main front entry is dropped and the den is on the same level as the dropped entry. The kitchen, dinette, and living room are one big open concept with a vaulted ceiling. The sink and dishwasher are built into the island, which also has additional seating. Double garden doors lead off the dinette to the rear deck, which is partially covered so you can enjoy sun or shade, and barbecue out of the elements. A gas fireplace in the living room makes it very cozy. There are two bedrooms on this level along with a 3-piece bathroom. The master has a 4-piece ensuite and a walk-in closet. The garage is oversize and has a dog door built in. From the kitchen area, head downstairs where you will find a huge theater room with angled double doors leading into it. Just off the theatre room is a kids play room or exercise area with storage for toys, etc. There is also another nice-sized bedroom and a 3-piece bathroom on this level, plus an extra room for crafts (which could be made into another bedroom as well or whatever you prefer).

PROTECTED BY COPYRIGHT LAWS.
 PROPERTY OF **E-DESIGNS PLANS INC.**

E-Designs Plans Inc.

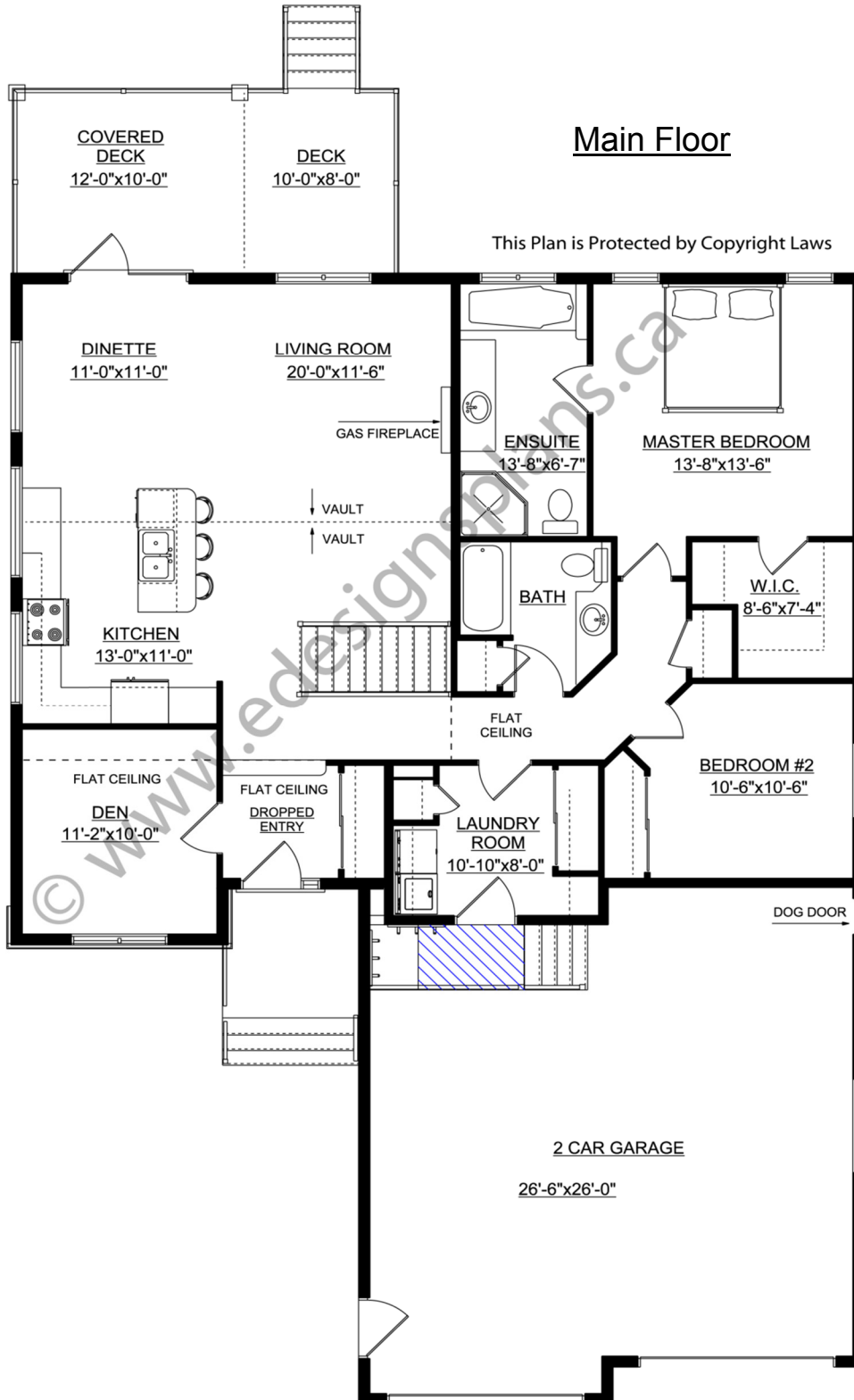
A western Canadian company from Alberta that designs and ships home plans all across Canada, the US, and Overseas.

For more information about this plan contact the designer at: info@edesignsplans.ca.

Plan 2014827

www.edesignsplans.ca

Call Us 1-855-675-1800



PROTECTED BY COPYRIGHT LAWS.
PROPERTY OF **E-DESIGNS PLANS INC.**

E-Designs Plans Inc.

A western Canadian company from Alberta that designs and ships home plans all across Canada, the US, and Overseas.

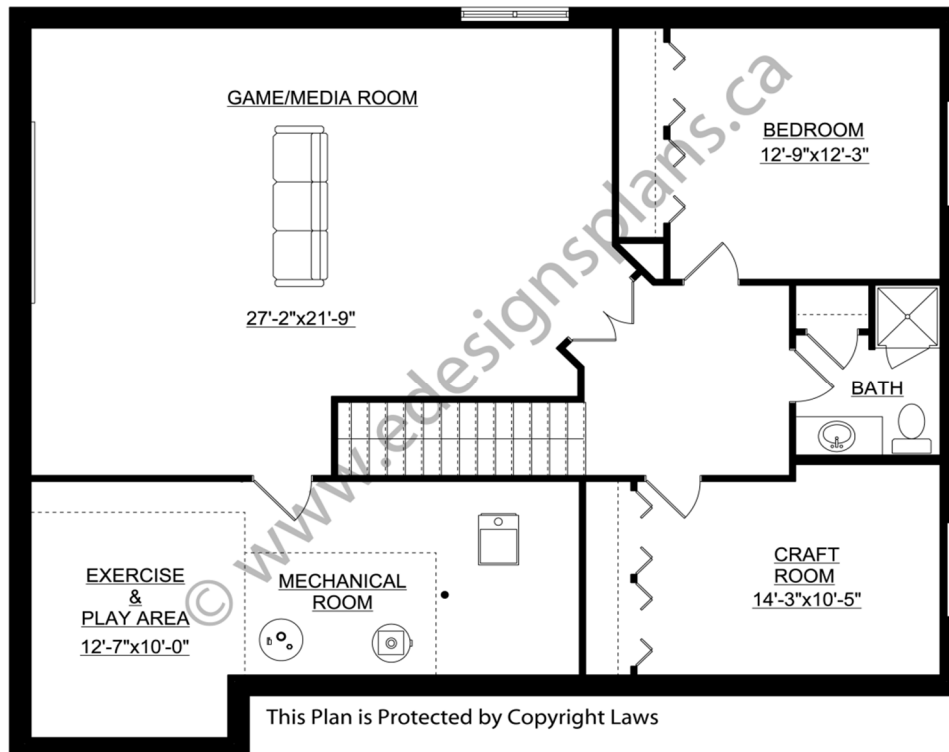
For more information about this plan contact the designer at: info@edesignsplans.ca.

Plan 2014827

www.edesignsplans.ca

[Call Us 1-855-675-1800](tel:1-855-675-1800)

Basement



PROTECTED BY COPYRIGHT LAWS.
PROPERTY OF **E-DESIGNS PLANS INC.**