

E-Designs Plans Inc.

A western Canadian company from Alberta that designs and ships home plans all across Canada, the US, and Overseas.

For more information about this plan contact the designer at: info@edesignsplans.ca.

Plan #: 2003126 Front Elevation

www.edesignsplans.ca

Call Us 1-855-675-1800



Rear Elevation

Bungalow with 2-Car Garage
1238 Sq. Ft. Main Floor

Width: 44'-0"
Depth: 57'-4" (plus deck)
Bedrooms: 2
Bathrooms: 1
Main Floor Laundry: Yes
Walk-in Pantry: Yes
Office/Den: No

Plan #: 2003126

Exterior Walls: 2x6 x 8 Ft. (Main Floor)
Foundation: 8' ICF (Insulated Concrete Form) (Other Foundations Available)
Special Ceilings: None
Fireplace: Yes
Deck(s): Rear (Covered)
Veranda: Yes (Covered)
Attached Garage: Yes (2-Car with 9'x8' Doors)
Finished Basement Plan: No

Bungalow with 2-Car Garage. In the door from the front covered veranda takes you into the living room. Pillars and arched openings take you through to the kitchen and dining rooms. The kitchen has a corner pantry and centre island. A garden door leads from the dining room to the rear covered deck. Down the hallway just past the laundry room takes you to the bedrooms. The master has a walk-in closet and shares a 4-piece ensuite with the other bedroom. There is also access through the laundry room from the 2-car garage, which also has a man door on the side. All in all, a nice looking bungalow design with its front posts and brick trim on the garage.

E-Designs Plans Inc.

A western Canadian company from Alberta that designs and ships home plans all across Canada, the US, and Overseas.

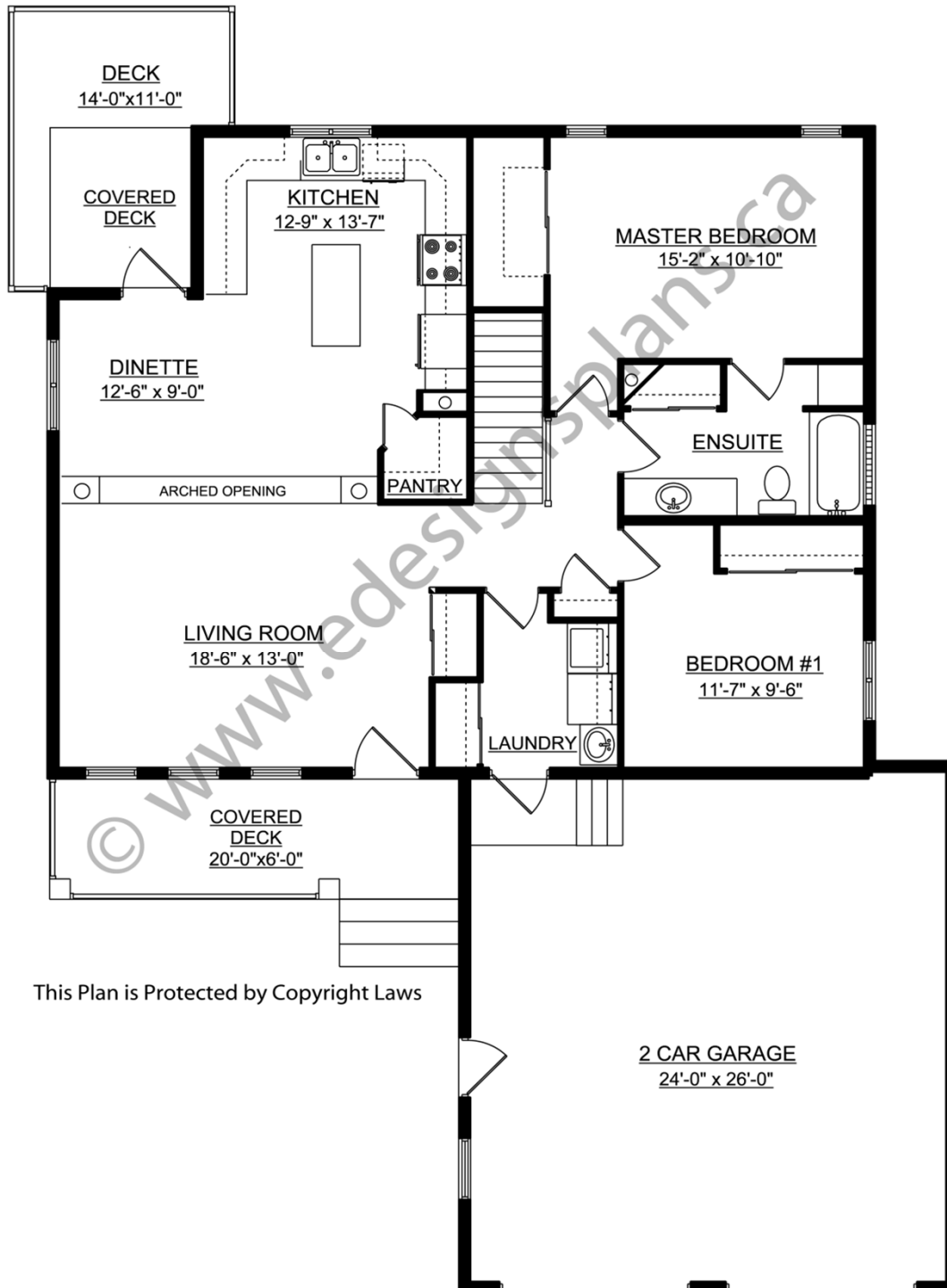
For more information about this plan contact the designer at: info@edesignsplans.ca.

Plan 2003126

www.edesignsplans.ca

[Call Us 1-855-675-1800](tel:1-855-675-1800)

Main Floor



This Plan is Protected by Copyright Laws

PROTECTED BY COPYRIGHT LAWS.
PROPERTY OF **E-DESIGNS PLANS INC.**