

E-Designs Plans Inc.

A western Canadian company from Alberta that designs and ships home plans all across Canada, the US, and Overseas.

For more information about this plan contact the designer at: info@edesignsplans.ca.

Plan #: 2005206 Front Elevation

www.edesignsplans.ca

[Call Us 1-855-675-1800](tel:1-855-675-1800)



Bungalow Plan - No Garage

1146 Sq. Ft. Main Floor

Width: 30'-0"
Depth: 45'-0" (plus deck)
Bedrooms: 2
Bathrooms: 2
Main Floor Laundry: Yes
Walk-in Pantry: No
Office/Den: No

Plan #: 2005206

Exterior Walls: 2x6 x 8 Ft. (Main Floor)
Foundation: 8' Concrete
(Other Foundations Available)
Special Ceilings: None
Fireplace: Yes
Deck(s): Rear
Veranda: Yes
Attached Garage: No
Finished Basement Plan: No

1146 Sq. Ft. Bungalow: This plan has that old charming look with the pillars on the front covered veranda. Enjoy your day sitting on the front veranda or the large deck in the rear. From the front entry, the great room grabs your attention with the corner fireplace and open stairwell leading to the lower level. A nice "L"-shaped kitchen with a working island that includes a lunch counter. With large windows in the nook area, the view over the rear deck and backyard is unobstructed. The laundry room is located off the kitchen. The guest room and the master bedroom are a nice size. The master has a three piece ensuite. The basement area is undeveloped except for the mechanical room. Lots of room for more bedrooms, family room, etc. This is a nice and simple plan to build.

PROTECTED BY COPYRIGHT LAWS.
PROPERTY OF ***E-DESIGNS PLANS INC.***

E-Designs Plans Inc.

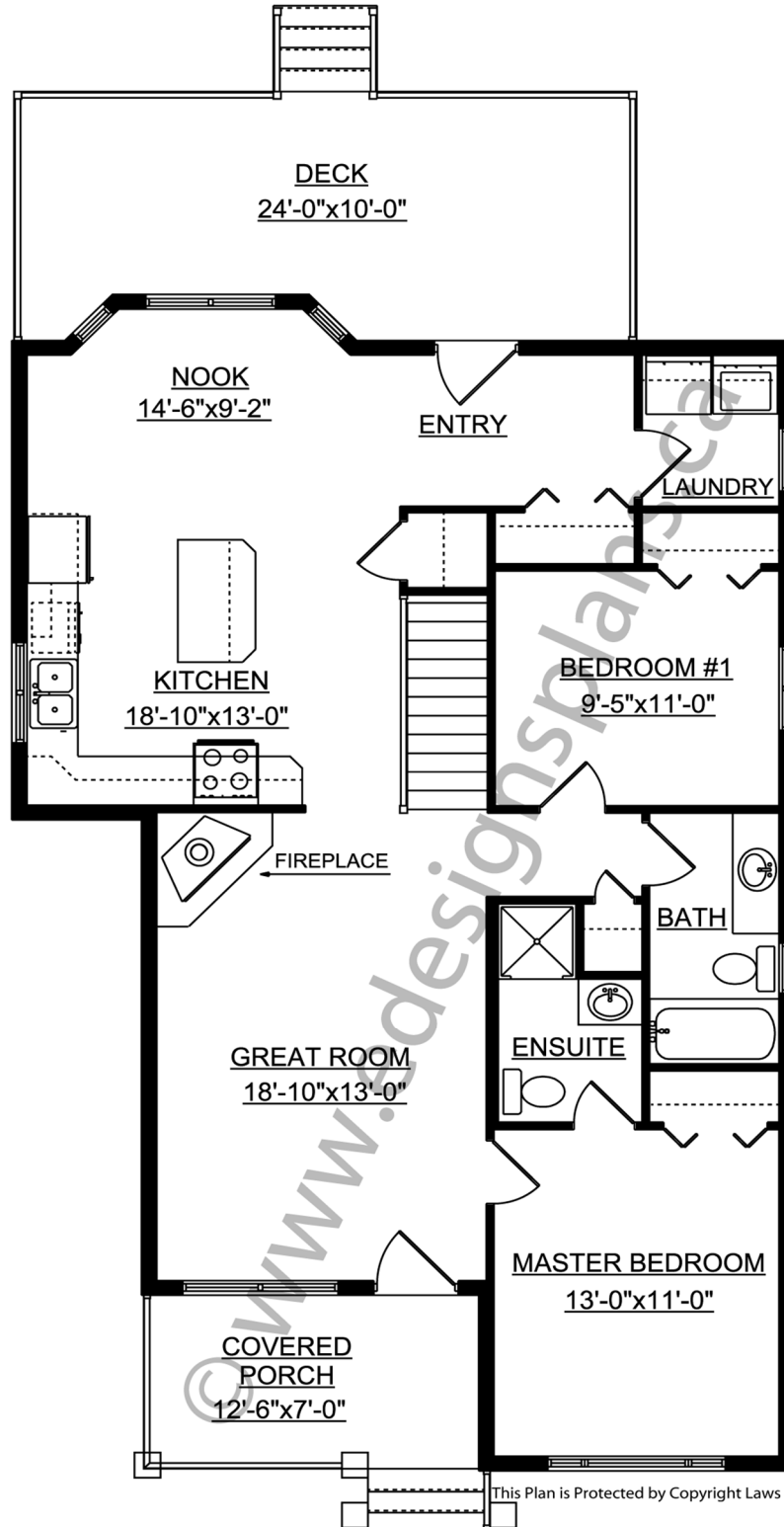
A western Canadian company from Alberta that designs and ships home plans all across Canada, the US, and Overseas.

For more information about this plan contact the designer at: info@edesignsplans.ca.

Plan 2005206

www.edesignsplans.ca

Call Us 1-855-675-1800



Main Floor

This Plan is Protected by Copyright Laws

PROTECTED BY COPYRIGHT LAWS.
PROPERTY OF **E-DESIGNS PLANS INC.**