

# E-Designs Plans Inc.

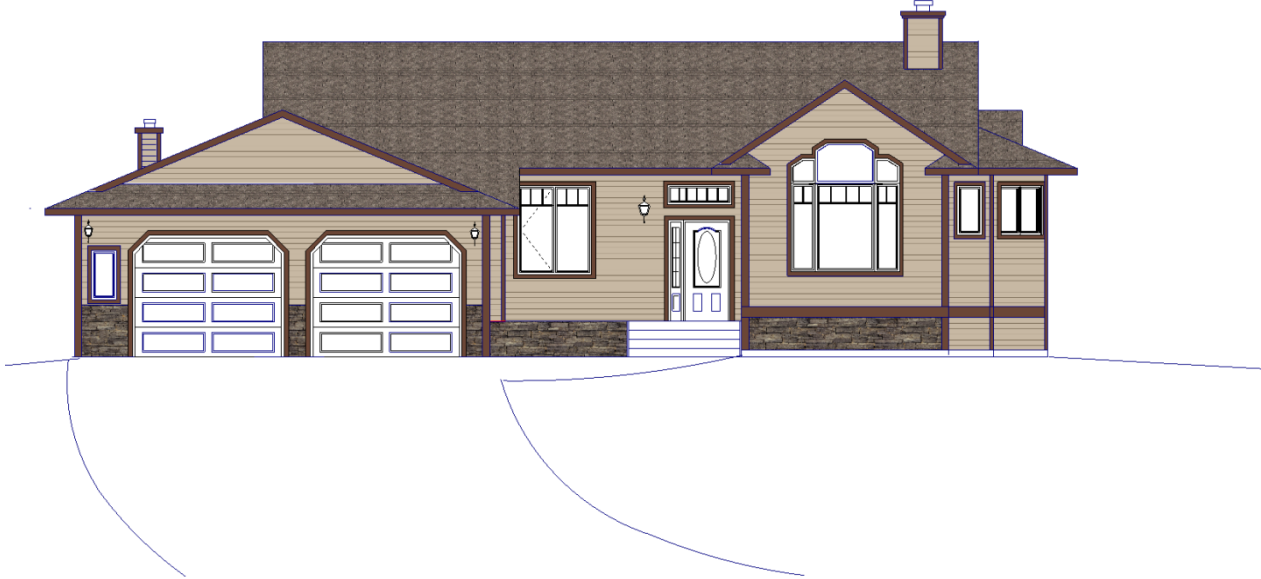
A western Canadian company from Alberta that designs and ships home plans all across Canada, the US, and Overseas.

For more information about this plan contact the designer at: [info@edesignsplans.ca](mailto:info@edesignsplans.ca).

Plan #: 2006312 Front Elevation

[www.edesignsplans.ca](http://www.edesignsplans.ca)

[Call Us 1-855-675-1800](tel:1-855-675-1800)



Rear Elevation

## Bungalow with 2-Car Garage

1619 Sq. Ft. Main Floor

Width:	66'-0"
Depth:	61'-8" (plus deck)
Bedrooms:	1
Bathrooms:	2 & a Half Bath
Main Floor Laundry:	Yes
Walk-in Pantry:	Yes
Office/Den:	Yes

## Plan #: 2006312

Exterior Walls:	2x6 x 8 Ft. (Main Floor)
Foundation:	9' Concrete Wall (Other Foundations Available)
Special Ceilings:	Vaulted Great Room
Fireplace:	Wood Stove
Deck(s):	Rear (Partially Covered)
Veranda:	Yes (Covered)
Attached Garage:	Yes (2-Car with 10'x8' Doors)
Finished Basement Plan:	No

**Bungalow with 2-Car Garage.** The front entry is covered and dropped. Just inside is a coat closet and then it's up a few stairs to the living area. The great room is immediately on your right and is vaulted to accommodate the massive windows. There is a wood stove in the corner for added warmth. A country style kitchen is open to the dining room. The kitchen has a corner pantry and large island with lunch counter, and lots of cabinet space. A french door leads outside from the dining room the rear partially covered deck. You can also access the rear deck from the master bedroom. The dining room and master bedroom are both cantilevered. Down the hall is an office with built-in work station. The master bedroom is at the end of that hallway and has a huge walk-in closet and 3 piece ensuite. Turning left down another hallway takes you to the laundry room and back entry coat closet. Down the stairs, there is a mudroom with lots of storage and 2-piece bathroom at the garage level for added square footage and easy clean-up before entering the house. The garage has two 10'x8' doors and a sump for drainage. A man door leads from the garage to the side yard.

# E-Designs Plans Inc.

A western Canadian company from Alberta that designs and ships home plans all across Canada, the US, and Overseas.

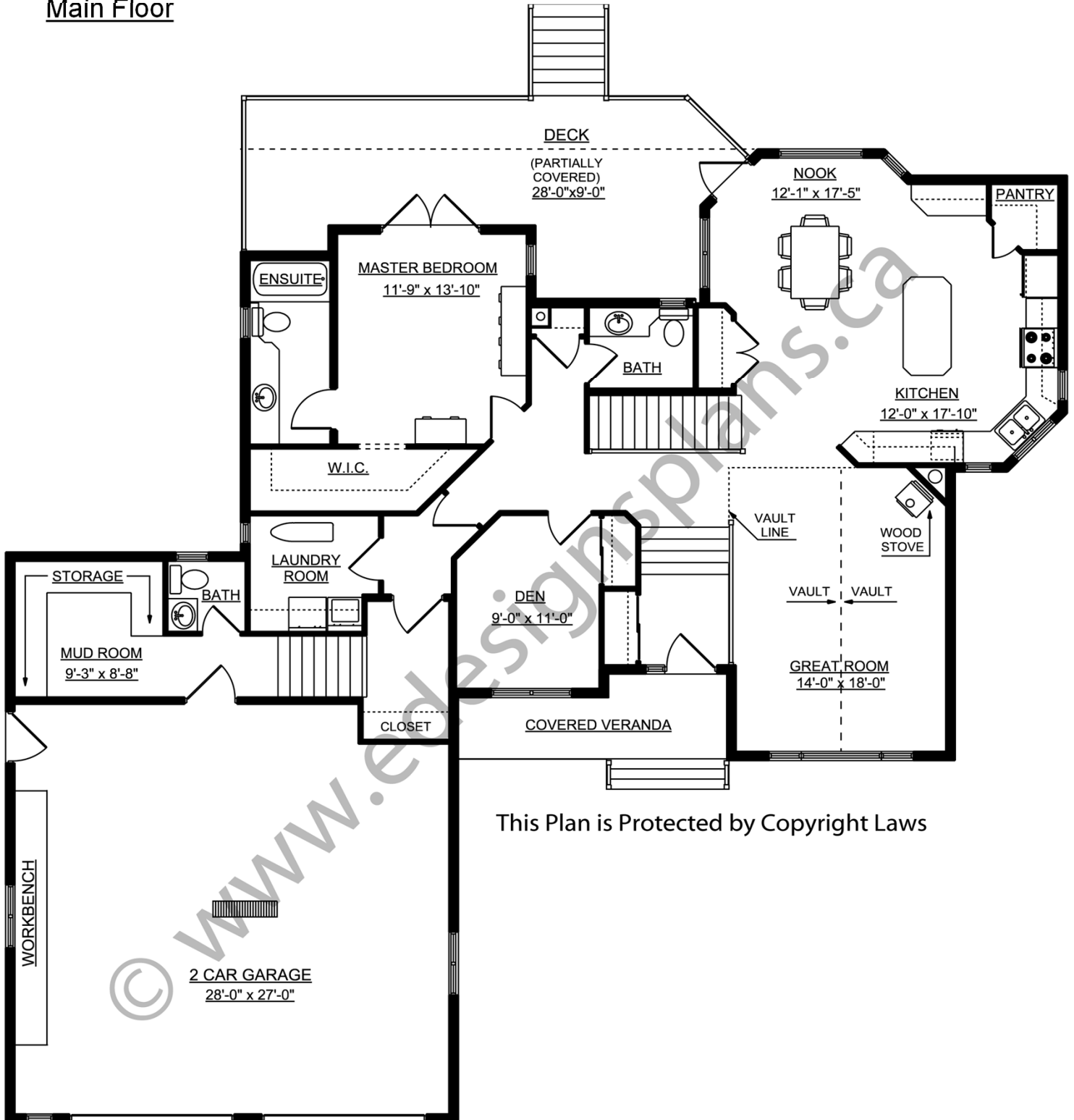
For more information about this plan contact the designer at: [info@edesignsplans.ca](mailto:info@edesignsplans.ca).

Plan 2006312

[www.edesignsplans.ca](http://www.edesignsplans.ca)

Call Us 1-855-675-1800

## Main Floor



This Plan is Protected by Copyright Laws

PROTECTED BY COPYRIGHT LAWS.  
PROPERTY OF **E-DESIGNS PLANS INC.**