

# E-Designs Plans Inc.

A western Canadian company from Alberta that designs and ships home plans all across Canada, the US, and Overseas.

For more information about this plan contact the designer at: [info@edesignsplans.ca](mailto:info@edesignsplans.ca).

**Plan #: 2008409 Front Elevation**

[www.edesignsplans.ca](http://www.edesignsplans.ca)

**Call Us 1-855-675-1800**



**Left Elevation**

## **Bungalow with 2-Car Garage**

1976 Sq. Ft. Main Floor

Width: 62'-0" (incl veranda)  
 Depth: 48'-6" (incl veranda)  
 Bedrooms: 2  
 Bathrooms: 2  
 Main Floor Laundry: Yes  
 Walk-in Pantry: Yes  
 Office/Den: Yes

## **Plan #: 2008409**

Exterior Walls: 2x6 x 10 Ft. (Main Floor)  
 Foundation: 9' ICF (Insulated Concrete Form)  
 (Other Foundations Available)  
 Special Ceilings: Vaulted Front Dormer  
 Fireplace: No  
 Deck(s): Side (Covered)  
 Veranda: Yes  
 Attached Garage: Yes (2-Car with 10'x8' Doors)  
 Finished Basement Plan: No (Walkout)

**1976 Sq. Ft. Bungalow with Walkout:** A very spacious open design home. Featuring 10 foot ceilings on the main floor. The front foyer and part of the living room has a large vaulted dormer reaching over 20 feet high in the centre. The 12 foot elliptical window floods the main part of the home with natural lighting. This plan features large windows (88" high) to give a great view from all directions. Large decorative columns and arches form the outside edge of the living room. The open dining room has full view of the large country kitchen with walk-in pantry. No need to carry groceries/bottled water, etc. up the stairs from the garage when you can use the lift (dumb waiter) directly from the lower level to the inside of your pantry. Double french doors lead into the master bedroom with lots of room for a sitting area in the bay. The master has an attached 4-piece ensuite and double doors into a large walk-in closet. This plan features main floor laundry and a 3-piece guest bath, plus a nice sized den off the front foyer. You can access the the large covered veranda from three double french doors. The grand front steps were designed for this home being built into a hillside. The Stucco detailed columns and arches give this home a look and feel nothing short of spectacular. The lower level has 9 foot ceilings. The built in garage has two 10'x8' overhead doors and one man door. The rest of the basement is unfinished leaving you the option to finish it with your own design.

PROTECTED BY COPYRIGHT LAWS.  
 PROPERTY OF **E-DESIGNS PLANS INC.**

# E-Designs Plans Inc.

A western Canadian company from Alberta that designs and ships home plans all across Canada, the US, and Overseas.

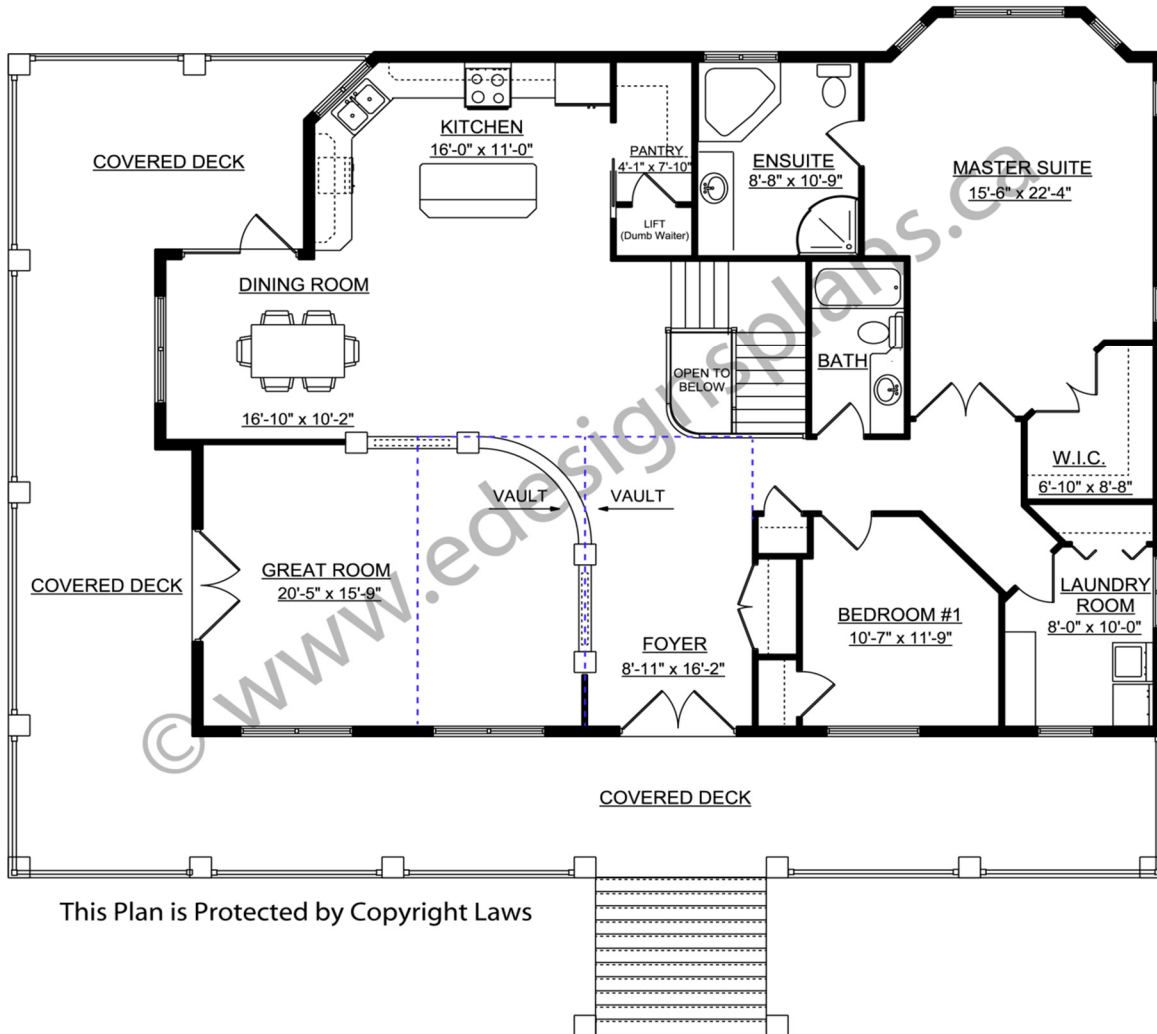
For more information about this plan contact the designer at: [info@edesignsplans.ca](mailto:info@edesignsplans.ca).

Plan 2008409

[www.edesignsplans.ca](http://www.edesignsplans.ca)

[Call Us 1-855-675-1800](tel:1-855-675-1800)

## Main Floor



PROTECTED BY COPYRIGHT LAWS.  
PROPERTY OF **E-DESIGNS PLANS INC.**