

# E-Designs Plans Inc.

A western Canadian company from Alberta that designs and ships home plans all across Canada, the US, and Overseas.

For more information about this plan contact the designer at: [info@edesignsplans.ca](mailto:info@edesignsplans.ca).

**Plan #: 2008411 Front Elevation**

[www.edesignsplans.ca](http://www.edesignsplans.ca)

**Call Us 1-855-675-1800**



## **Craftsman Style Bungalow with 2-Car Garage**

**Plan #: 2008411**

**1809 Sq. Ft. Main Floor**

Width: 60'-6"  
Depth: 63'-0" (incl veranda)  
Bedrooms: 2  
Bathrooms: 2  
Main Floor Laundry: No  
Walk-in Pantry: Yes  
Office/Den: Yes  
Finished Basement Plan: No

Exterior Walls: 2x6 x 9 Ft. (Main Floor)  
Foundation: 9' ICF (Insulated Concrete Form)  
(Other Foundations Available)  
Special Ceilings: Vaulted Great Room  
Coffered Master Bedroom  
Fireplace: Yes  
Deck(s): Rear (Partially Covered)  
Veranda: Yes  
Attached Garage: Yes (2-Car with 10'x8' Doors)

**1809 Sq. Ft. Bungalow in the Craftsman Style.** Walk in the front foyer from the large covered veranda into an open foyer. Double French doors off the foyer lead into a large den/office with built in wall units. The foyer then leads you into a very open living area. A kitchen that would suit any needs including a large island with lunch counter and a spacious walk in pantry. The oversized dining room has lots of windows and a garden door leading to the deck in the rear. Relax in the great room beside the gas fireplace or enjoy a movie on your TV, which is built into a full wall unit. The vaulted ceiling in the great room adds that extra touch with a plant ledge built into the vault over the island. You can also access all this space from the oversized garage which has parking for two vehicles, a workshop area, and two large 10'x8' overhead doors. There is a separate side entrance into the mudroom. The master bedroom has a coffered ceiling and access to a covered rear deck. The master has a 5-piece ensuite with access to a large walk-in closet. The front has a false dormer which gives the appearance of a second storey. This plan has a 9 foot basement, but the design is unfinished to give you the opportunity to put all the finishing touches that you would like into it. Overall, a very beautiful home.

PROTECTED BY COPYRIGHT LAWS.  
PROPERTY OF **E-DESIGNS PLANS INC.**

# E-Designs Plans Inc.

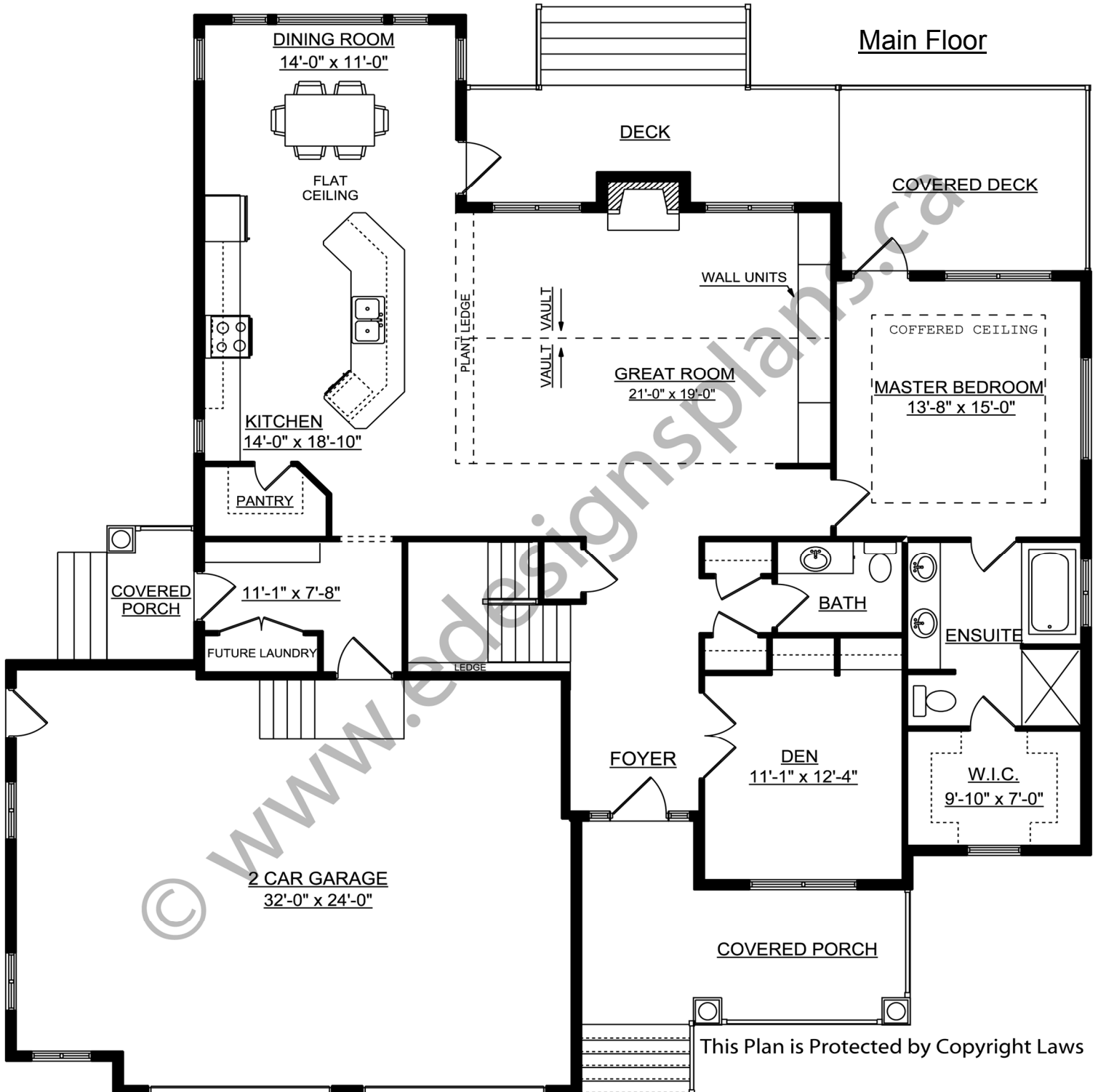
A western Canadian company from Alberta that designs and ships home plans all across Canada, the US, and Overseas.

For more information about this plan contact the designer at: [info@edesignsplans.ca](mailto:info@edesignsplans.ca).

Plan 2008411

[www.edesignsplans.ca](http://www.edesignsplans.ca)

Call Us 1-855-675-1800



This Plan is Protected by Copyright Laws

PROTECTED BY COPYRIGHT LAWS.  
PROPERTY OF **E-DESIGNS PLANS INC.**