

E-Designs *Plans Inc.*

A western Canadian company from Alberta that designs and ships home plans all across Canada, the US, and Overseas.

For more information about this plan contact the designer at: info@edesignsplans.ca.

Plan #: 2008418 Front Elevation

www.edesignsplans.ca

Call Us 1-855-675-1800



Rear Elevation



Ranch Style Bungalow with 3-Car Garage

2410 Sq. Ft. Main Floor
2174 Sq. Ft. Lower Floor
4584 Sq. Ft. Total Living Area

Width: 123'-0"
Depth: 68'-0"
Bedrooms: 5
Bathrooms: 4
Main Floor Laundry: Yes
Walk-in Pantry: Yes
Office/Den: Yes

Plan #: 2008418

Exterior Walls: 2x6 x 9 Ft. (Main Floor)
Foundation: 9' ICF (Insulated Concrete Form) (Other Foundations Available)
Special Ceilings: Coffered Master Bedroom
Fireplace: Yes
Deck(s): Rear (Covered)
Veranda: Yes
Attached Garage: Yes (3-Car - 10'x8' & 12'x8' Doors)
Finished Basement Plan: Yes

Executive Rancher Style Home. 2410 Sq. Ft. of living space on the main floor. This home would look great on any farm or ranch, even on an acreage. Enter from the covered front veranda into the large open front foyer. The great room will get your attention with large column dividers and the fireplace in between two large windows. The large kitchen features a lunch counter. The extra big walk-in pantry even has room for a freezer. The dining room is nice and bright with a large window and French door leading onto the covered deck area. The office is conveniently located off the kitchen area. The two large bedrooms have walk-in closets. The master bedroom features a coffered ceiling and a bay window. The 4-piece ensuite includes a corner spa tub. No shortage of room in the walk-in closet. The 3-car garage has a mudroom with a 3-piece bath and an area for all the chore clothes. The garage has two 10'x8' and one 12'x8' overhead doors. Lots of room for the toys too. The lower floor has two large bedrooms and a 3-piece bath. The family/games room is large enough for pretty much anything you would like to do. The games room also has a large wet bar area with a walk-in pantry, fridge, sink and dishwasher.

E-Designs Plans Inc.

A western Canadian company from Alberta that designs and ships home plans all across Canada, the US, and Overseas.

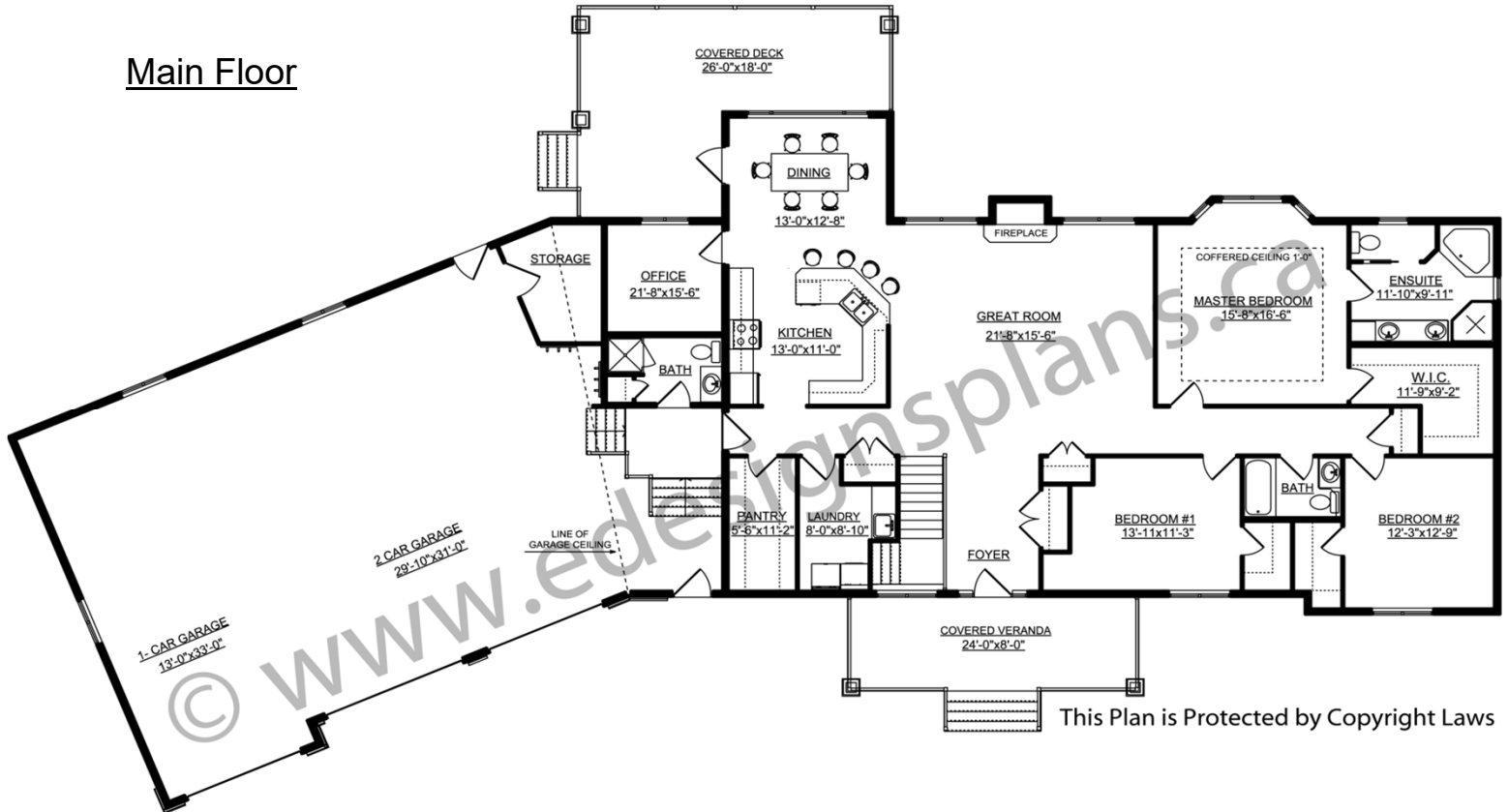
For more information about this plan contact the designer at: info@edesignsplans.ca.

Plan 2008418

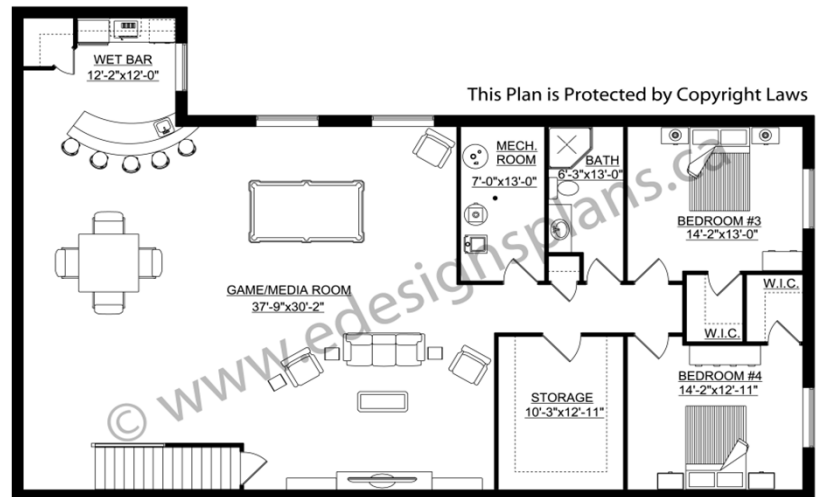
www.edesignsplans.ca

Call Us 1-855-675-1800

Main Floor



Basement



PROTECTED BY COPYRIGHT LAWS.
PROPERTY OF **E-DESIGNS PLANS INC.**