

# *E-Designs* *Plans Inc.*

A western Canadian company from Alberta that designs and ships home plans all across Canada, the US, and Overseas.

For more information about this plan contact the designer at: [info@edesignsplans.ca](mailto:info@edesignsplans.ca).

**Plan #: 2008433 Front Elevation**

[www.edesignsplans.ca](http://www.edesignsplans.ca)

[Call Us 1-855-675-1800](tel:1-855-675-1800)



**Rear Elevation**

## **Ranch Style Bungalow with 2-Car Garage**

1949 Sq. Ft. Main Floor

Width: 92'-6" (incl. garage)  
 Depth: 32'-0"  
 Bedrooms: 2  
 Bathrooms: 2  
 Main Floor Laundry: Yes  
 Walk-in Pantry: Yes  
 Office/Den: Yes

## **Plan #: 2008433**

Exterior Walls: 2x6 x 8 Ft. (Main Floor)  
 Foundation: 8' ICF (Insulated Concrete Form) (Other Foundations Available)  
 Special Ceilings: Vaulted  
 Fireplace: Yes  
 Deck(s): Rear  
 Veranda: Yes  
 Attached Garage: Yes (2-Car with 10'x8' Doors)  
 Finished Basement Plan: No

**1949 Sq Ft. Ranch Style Home.** Great for the acreage or the farm. With an oversized U-shaped kitchen and a large bar style island, large family gatherings are not a problem. The kitchen and dining area overlook the great room with a wood burning stove for those cold winter days. The ceiling in the great room and dining rooms are vaulted with rake head windows allowing lots of natural light in. Enjoy the outdoors on two large decks in the front and the rear. The front veranda is covered. The large laundry room is ideally located close to the garage where chore clothes can be removed before entering the main house. The master bedroom is large with a walk-in closet and 3-piece ensuite. There is a guest bedroom and a guest bathroom. The office could be made into a bedroom if needed. The oversized garage has 10' x 8' doors and two man doors. Note the floor drain making it easy to wash things right in the garage. There is also an entrance to the basement from the garage to make it easy to access the cold room to store those home grown vegetables. The basement is unfinished so you can developed it when ready.

PROTECTED BY COPYRIGHT LAWS.  
 PROPERTY OF ***E-DESIGNS PLANS INC.***

# E-Designs Plans Inc.

A western Canadian company from Alberta that designs and ships home plans all across Canada, the US, and Overseas.

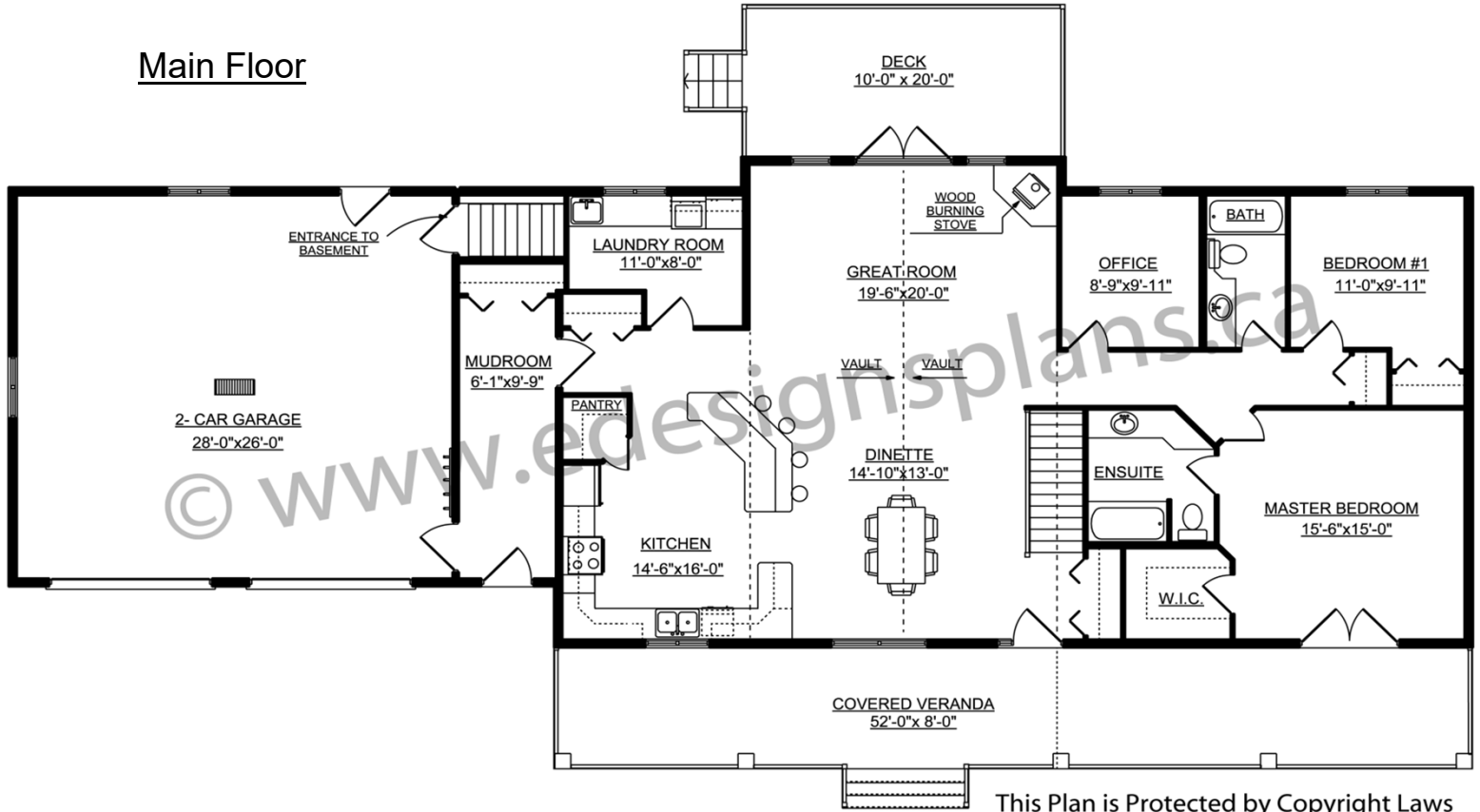
For more information about this plan contact the designer at: [info@edesignsplans.ca](mailto:info@edesignsplans.ca).

Plan 2008433

[www.edesignsplans.ca](http://www.edesignsplans.ca)

Call Us 1-855-675-1800

## Main Floor



This Plan is Protected by Copyright Laws

PROTECTED BY COPYRIGHT LAWS.  
PROPERTY OF **E-DESIGNS PLANS INC.**