

E-Designs Plans Inc.

A western Canadian company from Alberta that designs and ships home plans all across Canada, the US, and Overseas.

For more information about this plan contact the designer at: info@edesignsplans.ca.

Plan #: 2009441 Front Elevation

www.edesignsplans.ca

[Call Us 1-855-675-1800](tel:1-855-675-1800)



Bungalow with Walkout & 2-Car Garage

1500 Sq. Ft. Main Floor

Width: 44'-0"
Depth: 57'-0"
Bedrooms: 3
Bathrooms: 2
Main Floor Laundry: Yes
Walk-in Pantry: Yes
Office/Computer Area: Yes

Plan #: 2009441

Exterior Walls: 2x6 x 8 Ft. (Main Floor)
Foundation: 9' ICF (Insulated Concrete Form)
(Other Foundations Available)
Special Ceilings: 4- Way Vault
Fireplace: Yes
Deck(s): Rear (Partially Covered)
Veranda: No
Attached Garage: Yes (2-Car with 16'x7' Door)
Finished Basement Plan: No (Walkout)

1500 Sq. Ft. Bungalow with a Walkout Basement: This plan is great for the building spot where you can use a walkout basement. Even without a walkout basement, this is a great floor plan. What catches your eye when you first enter is the openness right to the rear of the house. The 2-sided fireplace with its rounded walls go to the underside of the vaulted ceiling. The open U-shaped kitchen is well laid out to accentuate the openness of this plan. The large deck is partially covered. The master bedroom has two large closets and a 4-piece bath. The two extra bedrooms have a 4-piece bath. There is a neat little corner by the stairwell for a computer desk. The 2-car garage is larger than most garages. The basement is undeveloped so you can design it the way you would like. Great curb appeal with this home.

E-Designs Plans Inc.

A western Canadian company from Alberta that designs and ships home plans all across Canada, the US, and Overseas.

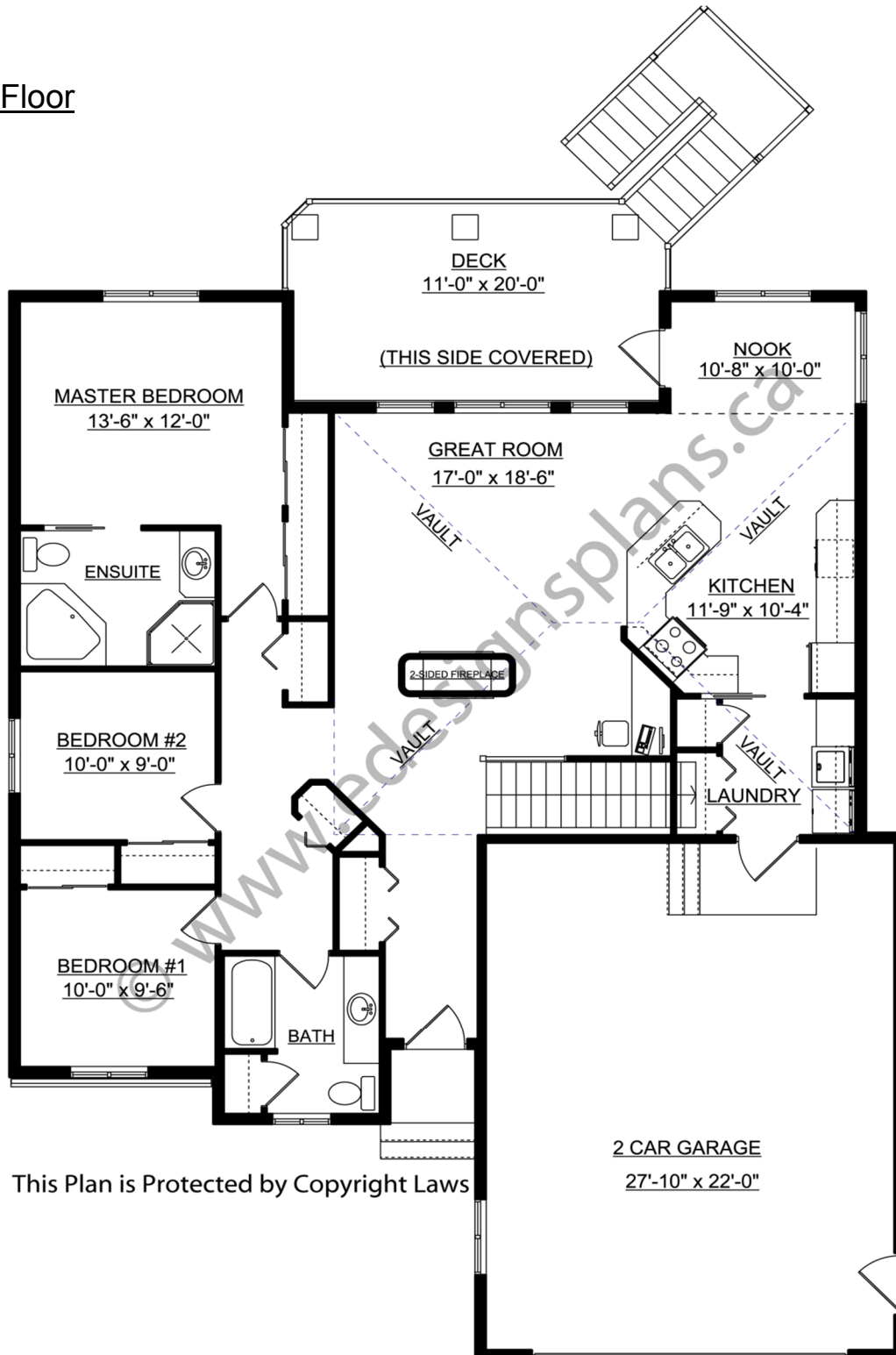
For more information about this plan contact the designer at: info@edesignsplans.ca.

Plan 2009441

www.edesignsplans.ca

[Call Us 1-855-675-1800](tel:1-855-675-1800)

Main Floor



This Plan is Protected by Copyright Laws

PROTECTED BY COPYRIGHT LAWS.
PROPERTY OF **E-DESIGNS PLANS INC.**