

# E-Designs Plans Inc.

A western Canadian company from Alberta that designs and ships home plans all across Canada, the US, and Overseas.

For more information about this plan contact the designer at: [info@edesignsplans.ca](mailto:info@edesignsplans.ca).

**Plan #: 2009480 Front Elevation**

[www.edesignsplans.ca](http://www.edesignsplans.ca)

**Call Us 1-855-675-1800**



## **Narrow Lot Bungalow with Attached Garage** **1238 Sq. Ft. Main Floor**

Width: 35'-0"  
Depth: 61'-6"  
Bedrooms: 3  
Bathrooms: 3  
Laundry: Lower Level  
Walk-in Pantry: Yes  
Office/Den: No

## **Plan #: 2009480**

Exterior Walls: 2x6 x 9 Ft. (Main Floor)  
Foundation: 9' ICF (Insulated Concrete Form)  
(Other Foundations Available)  
Special Ceilings: Vaulted Great Room  
Fireplace: Yes  
Deck(s): Rear  
Veranda: No  
Attached Garage: Yes (2-Car with 16'x7' Door)  
Finished Basement Plan: Yes

**Narrow Lot Bungalow with Attached 2-Car Garage:** This narrow lot plan has lots of space with the basement finished too. The open kitchen overlooks the nook and into the great room. The great room ceiling is vaulted and it has a gas fireplace for those cooler nights. Double garden doors lead from the nook to the rear deck. The "L"-shaped kitchen has a unique shaped island with a lunch counter and a walk-in pantry. The master bedroom has a 3-piece ensuite and a walk-in closet. There is also another bedroom on this level beside another 3-piece bathroom. The finished basement has one more bedroom with a nice-sized walk-in closet. The laundry is located in the oversized furnace room. There is also a 3-piece bath off the large rec room on the lower level. A 2-car garage is attached.

PROTECTED BY COPYRIGHT LAWS.  
PROPERTY OF **E-DESIGNS PLANS INC.**

# E-Designs Plans Inc.

A western Canadian company from Alberta that designs and ships home plans all across Canada, the US, and Overseas.

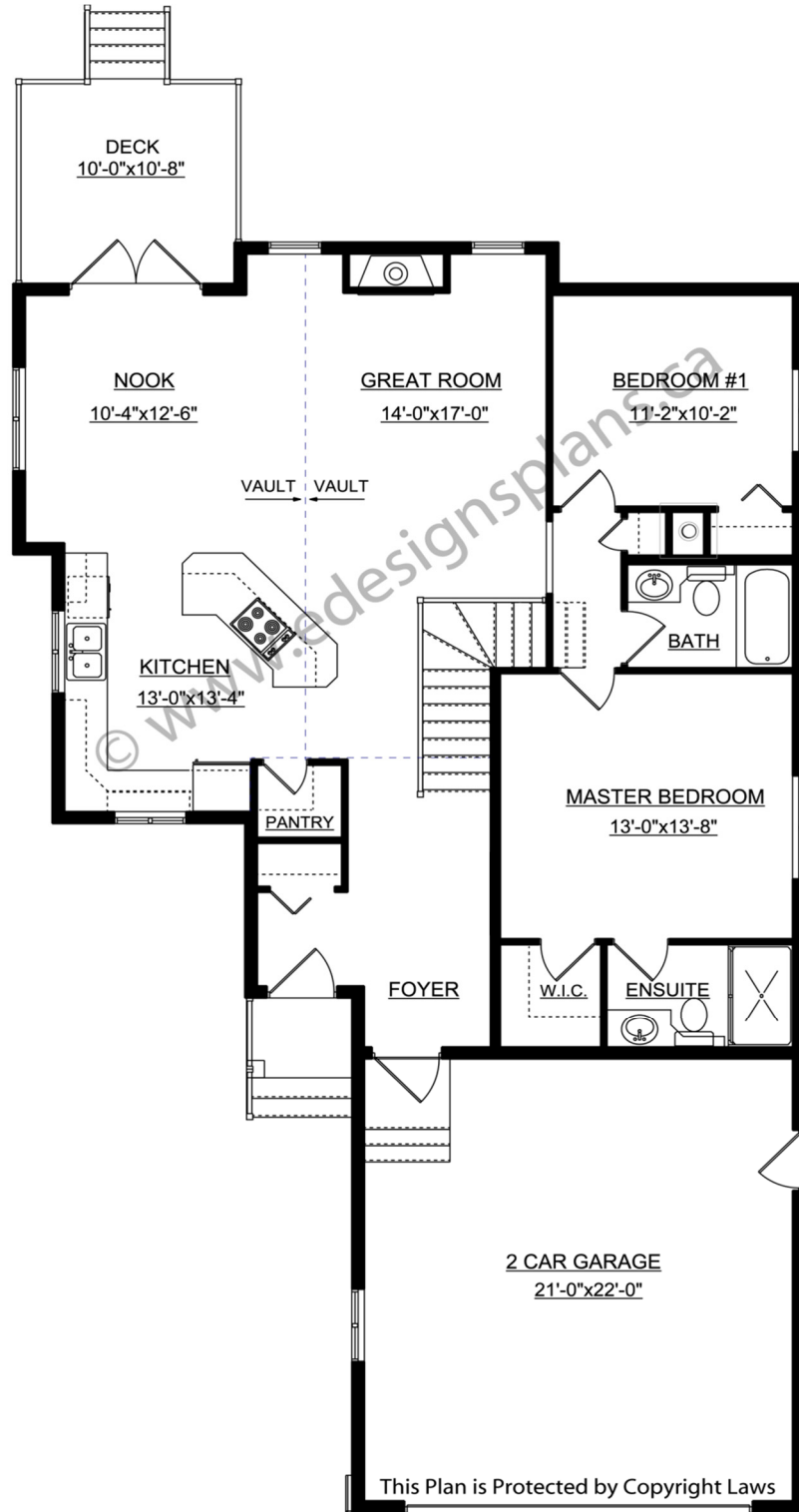
For more information about this plan contact the designer at: [info@edesignsplans.ca](mailto:info@edesignsplans.ca).

Plan 2009480

[www.edesignsplans.ca](http://www.edesignsplans.ca)

[Call Us 1-855-675-1800](tel:1-855-675-1800)

## Main Floor



This Plan is Protected by Copyright Laws

PROTECTED BY COPYRIGHT LAWS.  
PROPERTY OF **E-DESIGNS PLANS INC.**

# *E-Designs Plans Inc.*

A western Canadian company from Alberta that designs and ships home plans all across Canada, the US, and Overseas.

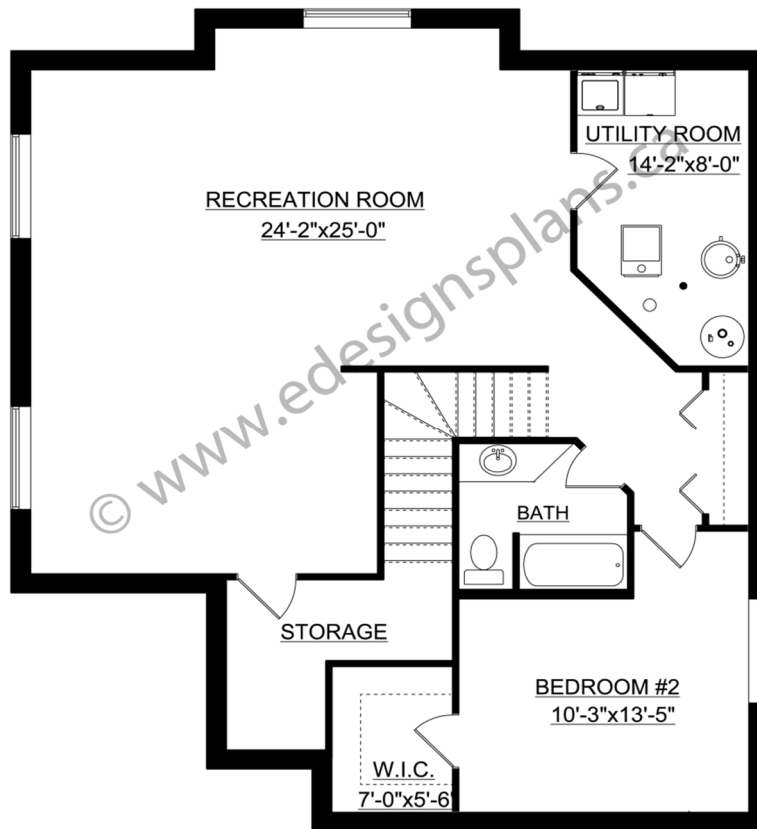
For more information about this plan contact the designer at: [info@edesignsplans.ca](mailto:info@edesignsplans.ca).

Plan 2009480

[www.edesignsplans.ca](http://www.edesignsplans.ca)

[Call Us 1-855-675-1800](tel:1-855-675-1800)

## Basement



This Plan is Protected by Copyright Laws