

E-Designs Plans Inc.

A western Canadian company from Alberta that designs and ships home plans all across Canada, the US, and Overseas.

For more information about this plan contact the designer at: info@edesignsplans.ca.

Plan #: 2009483 Front Elevation

www.edesignsplans.ca

Call Us 1-855-675-1800



Rear Elevation



Bungalow with Walkout

1292 Sq. Ft. Main Floor

1292 Sq. Ft. Lower Floor

2584 Sq. Ft. Total Living Area

Width: 82'-0"

Depth: 42'-0"

Bedrooms: 3

Bathrooms: 3

Main Floor Laundry: Yes

Walk-in Pantry: No

Office/Den: No

Plan #: 2009483

Exterior Walls: 2x6 x 8 Ft. (Main Floor)
Foundation: 9' ICF (Insulated Concrete Form)
(Other Foundations Available)

Special Ceilings: Vaulted Great Room

Fireplace: No

Deck(s): Side & Rear (Partially Covered)

Veranda: Yes

Attached Garage: Yes (2-Car with 10'x8' Doors)

Finished Basement Plan: Yes

Bungalow with a Walk-Out Basement: A smaller home with big features. The front and rear exteriors both have great curb appeal. The covered veranda in the front has access to one of the rear covered decks. Enter the large front entry, and immediately the great room with all its windows reaching to the vaulted ceiling from the floor, will give an unobstructed view to the rear of your property. The open "L" shaped kitchen and nook area are open to the great room. A double garden door provides access to another deck. The master bedroom also has a double garden door leading to a partially covered deck. It features a large walk-in closet and a 3-piece ensuite. The laundry room is conveniently located by the mudroom and the 3-piece bath with a 48" walk-in shower. Lots of space in this oversized garage; with its two 10'x8' overhead doors in this 30'x28' garage, you will be able to park any sized vehicle and still have room for some of dad's toys. The lower walk-out level features a large family room and a games room with a kitchenette. Access the patio with the double garden doors in the games room. There are two spare bedrooms, a 3-piece bath, and a large cold storage area.

PROTECTED BY COPYRIGHT LAWS.
PROPERTY OF **E-DESIGNS PLANS INC.**

E-Designs Plans Inc.

A western Canadian company from Alberta that designs and ships home plans all across Canada, the US, and Overseas.

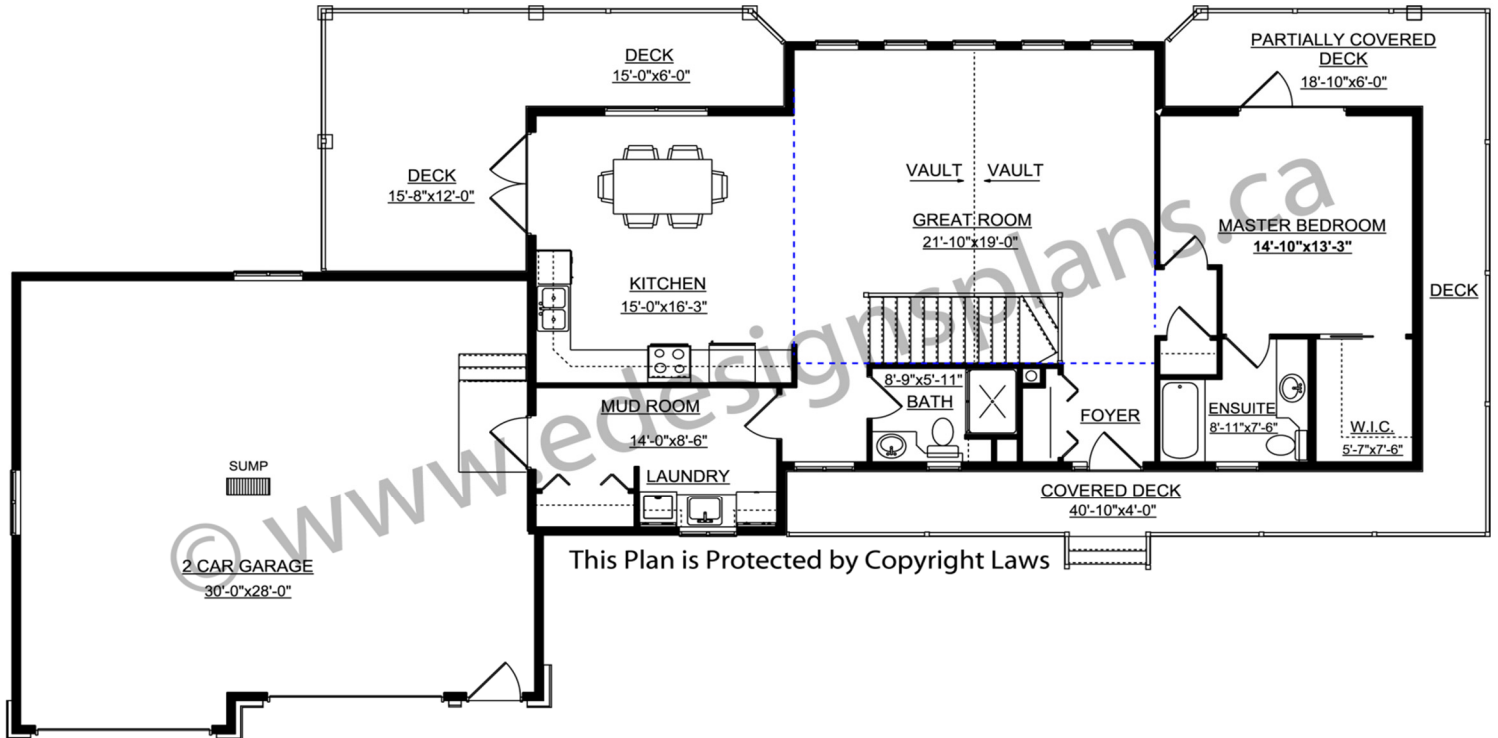
For more information about this plan contact the designer at: info@edesignsplans.ca.

Plan 2009483

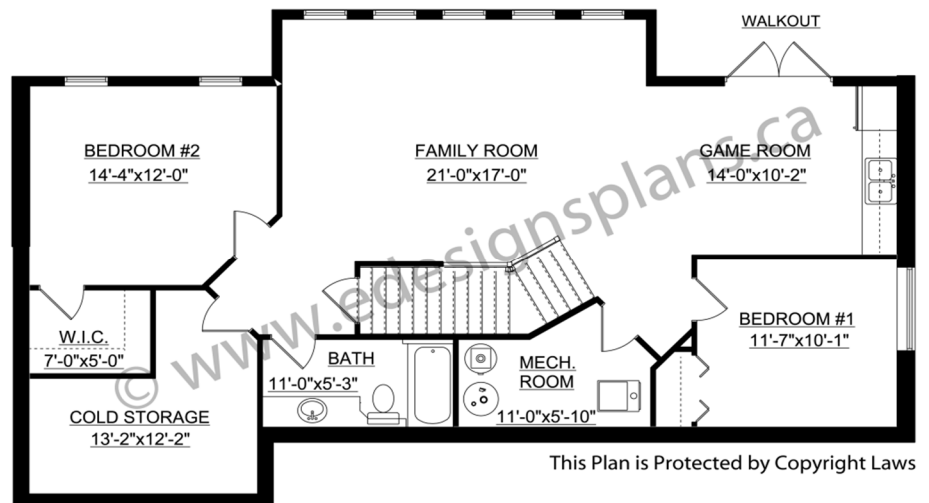
www.edesignsplans.ca

Call Us 1-855-675-1800

Main Floor



Basement



PROTECTED BY COPYRIGHT LAWS.
PROPERTY OF **E-DESIGNS PLANS INC.**