

E-Designs Plans Inc.

A western Canadian company from Alberta that designs and ships home plans all across Canada, the US, and Overseas.

For more information about this plan contact the designer at: info@edesignsplans.ca.

Plan #: 2009486 Front Elevation

www.edesignsplans.ca

Call Us 1-855-675-1800



Rear Elevation



Ranch Style Bungalow with Walkout
1993 Sq. Ft. Main Floor

Width: 82'-0"
Depth: 50'-0"
Bedrooms: 4
Bathrooms: 4
Main Floor Laundry: Yes
Walk-in Pantry: Yes
Flex Room/Office: Yes

Plan #: 2009486

Exterior Walls: 2x6 x 9 Ft. (Main Floor)
Foundation: 9' ICF (Insulated Concrete Form) (Other Foundations Available)
Special Ceilings: Vaulted Great Room
Fireplace: No
Deck(s): Rear (Partially Covered)
Veranda: Yes
Attached Garage: Yes (3-Car with 10'x8' Doors)
Finished Basement Plan: Yes

Ranch Style Bungalow with Walkout: This estatey looking home would be perfect for a country setting as well as a large city lot. The 3-car garage is disguised as part of the main house. The gable roofs, pillars, brick accents and detailing on the windows make this home stand out from the rest. The covered front veranda gives you a welcoming feeling. From the front entry you will see the openness of the great room and the spacious kitchen area. The great room and front entry are vaulted. The U-Shaped kitchen has a walk-in pantry and a working island with a lunch bar. Enjoy the outdoors on the large rear deck or in the enclosed sunroom. For larger gatherings, there is a formal dining room. The master bedroom features a "Trayed" ceiling, a 5-piece ensuite, walk-in closet, and access to the rear deck. The two spare rooms are a nice size with plenty of closet space. The mudroom from the garage also has a laundry area. Dad will surely love this 3-car garage with three 10'x8' doors. Cleaning up from those messy jobs outside can be done in the 3-piece bathroom in the garage. There is also an area for a workshop. This plan also has a finished basement with a spare bedroom, exercise room (or office), theater room, storage, and a very large rec room with a wet bar area. Because this is a walkout plan, the windows are the same as the main floor which make the rooms nice and bright. All in all, a beautiful home plan.

PROTECTED BY COPYRIGHT LAWS.
PROPERTY OF **E-DESIGNS PLANS INC.**

E-Designs Plans Inc.

A western Canadian company from Alberta that designs and ships home plans all across Canada, the US, and Overseas.

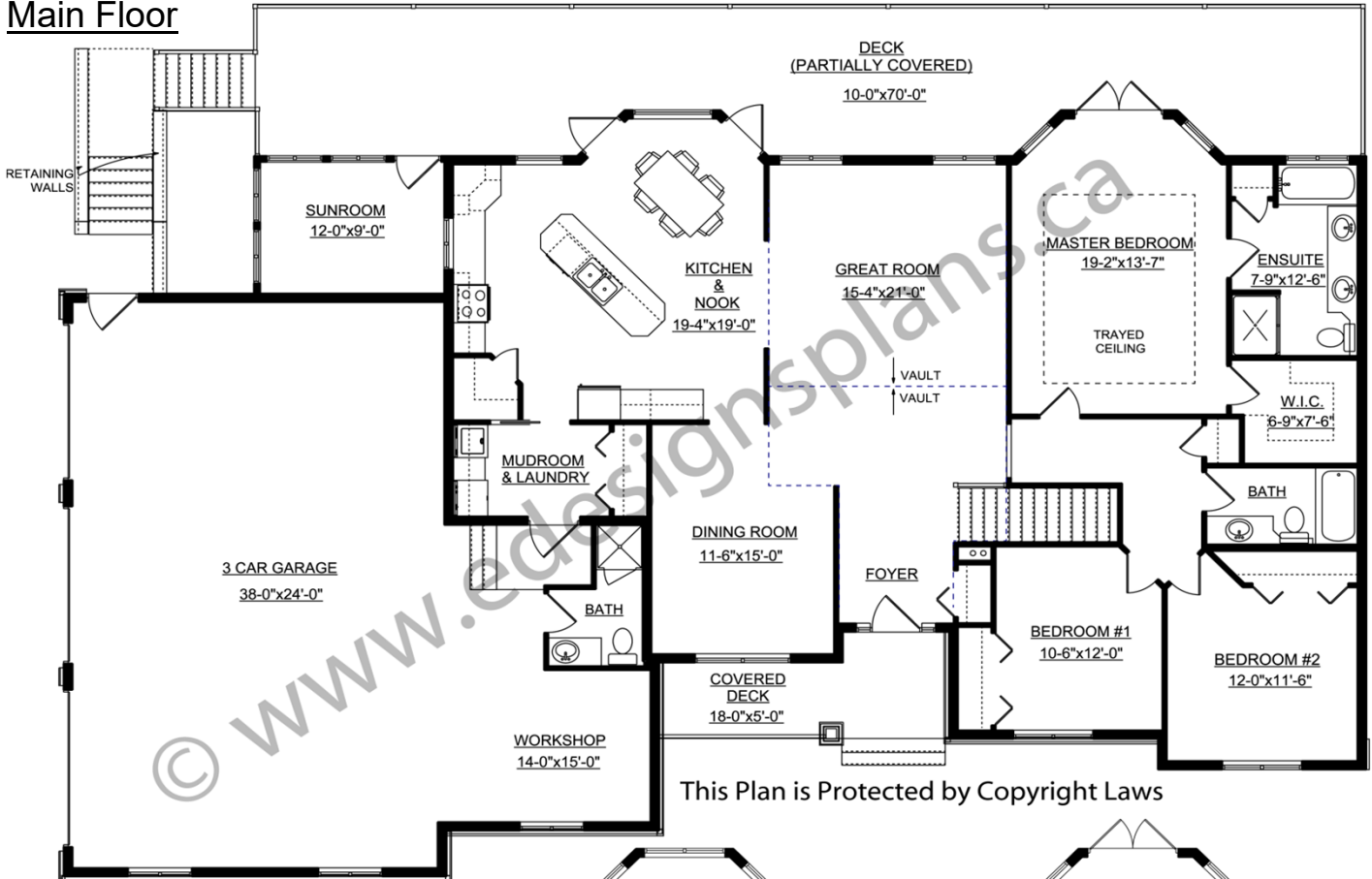
For more information about this plan contact the designer at: info@edesignsplans.ca.

Plan 2009486

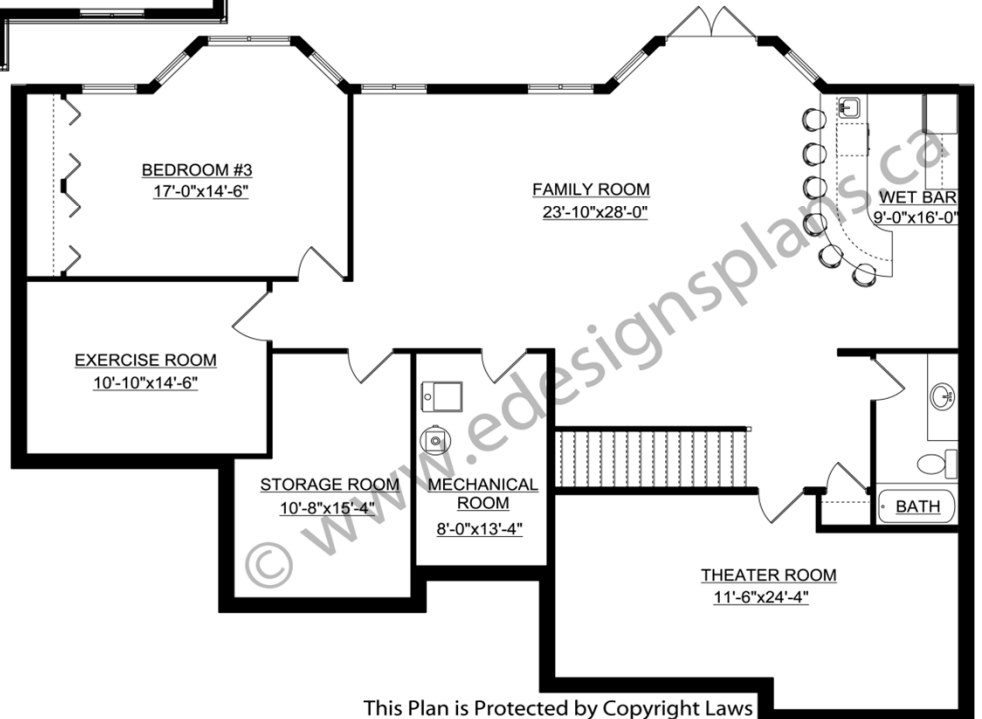
www.edesignsplans.ca

Call Us 1-855-675-1800

Main Floor



Basement



PROTECTED BY COPYRIGHT LAWS.
PROPERTY OF **E-DESIGNS PLANS INC.**