

# *E-Designs* *Plans Inc.*

A western Canadian company from Alberta that designs and ships home plans all across Canada, the US, and Overseas.

For more information about this plan contact the designer at: [info@edesignsplans.ca](mailto:info@edesignsplans.ca).

Plan #: 2009488 Front Elevation

[www.edesignsplans.ca](http://www.edesignsplans.ca)

[Call Us 1-855-675-1800](tel:1-855-675-1800)



## Bungalow with 3-Car Garage

1988 Sq. Ft. Main Floor

1810 Sq. Ft. Second Floor

3790 Sq. Ft. Total Living Area

Width: 101'-0"

Depth: 53'-0"

Bedrooms: 4

Bathrooms: 2 & a Half Bath

Laundry: Main & Lower Level

Walk-in Pantry: Yes

Office/Den: Yes

## Plan #: 2009488

Exterior Walls: 2x6 x 8 Ft. (Main Floor)

Foundation: 9' Concrete

(Other Foundations Available)

Special Ceilings: Vaulted Kitchen & Great Room

Fireplace: Yes

Deck(s): Side (Covered)

Veranda: Yes (Covered)

Attached Garage: Yes (3-Car 18'x8' & 10'x8' Doors)

Finished Basement Plan: Yes

**This Ranch Style Bungalow** has all the basics covered for a great farm or acreage home. The roof line features false gables and dormers to give it that country look along with the front and side covered veranda. From the large front entry you can access the office or the kitchen/dining area. This large country kitchen features a walk-in pantry and lots of counter and cabinet space. The working island also serves as a lunch bar. The dining area is open to the kitchen and great room, and has a double garden door leading out to the side veranda. The great room features a gas fireplace for those cooler nights. There is a vaulted ceiling in these rooms. A 2-piece bath is conveniently located by the mudroom and garage. This plan features two laundry rooms, one by the mudroom, and one in the lower level. A small storage room is located on the main floor. The 4-piece main bath features a 36"x48" shower plus a 6' soaking tub. The two bedrooms on this floor are nice sized with ample closet space. The 3-car garage with 18'x8' and 10'x8' overhead doors will accommodate any sized vehicle. There's also an access to the basement from the garage. The back side of the garage has been designed to serve as a heated "Veterinary Room" or a "Workshop" with access from outside into a boot room. A good place to keep soiled footwear and clothing. Accessing the basement from the garage, you have a large 3-piece bath with a 36"x48" walk-in shower. There's also a laundry area next to the "cold" storage room, with another storage area beside the stairs. The large bedrooms both have large closets. The family/rec. room has enough space for just about anything you would like: Pool Table, Theatre, Games, Crafts, etc. Entertaining here is even easier with a full kitchen. Also nice for doing home preserving or canning. This plan has been well thought out.

PROTECTED BY COPYRIGHT LAWS.  
PROPERTY OF **E-DESIGNS PLANS INC.**

# E-Designs Plans Inc.

A western Canadian company from Alberta that designs and ships home plans all across Canada, the US, and Overseas.

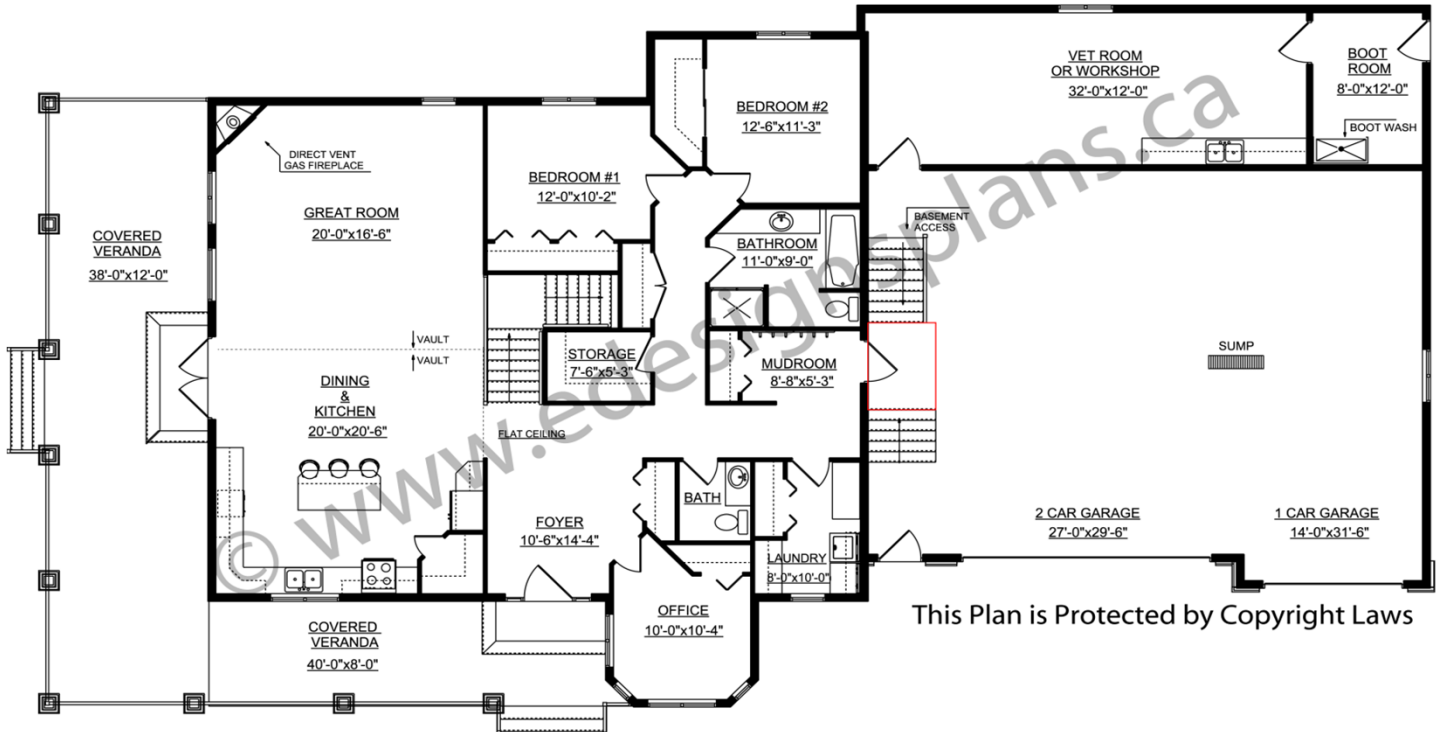
For more information about this plan contact the designer at: [info@edesignsplans.ca](mailto:info@edesignsplans.ca).

Plan 2009488

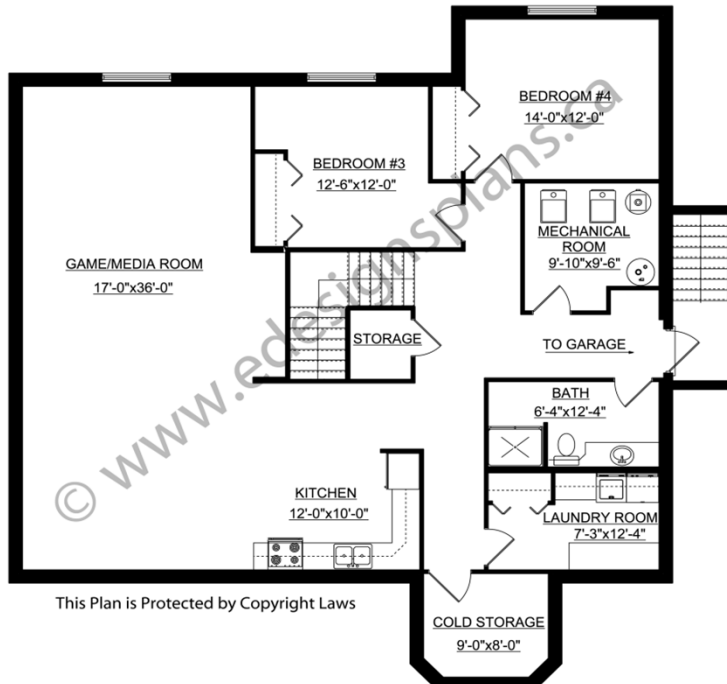
[www.edesignsplans.ca](http://www.edesignsplans.ca)

Call Us 1-855-675-1800

## Main Floor



## Basement



PROTECTED BY COPYRIGHT LAWS.  
PROPERTY OF **E-DESIGNS PLANS INC.**