

E-Designs Plans Inc.

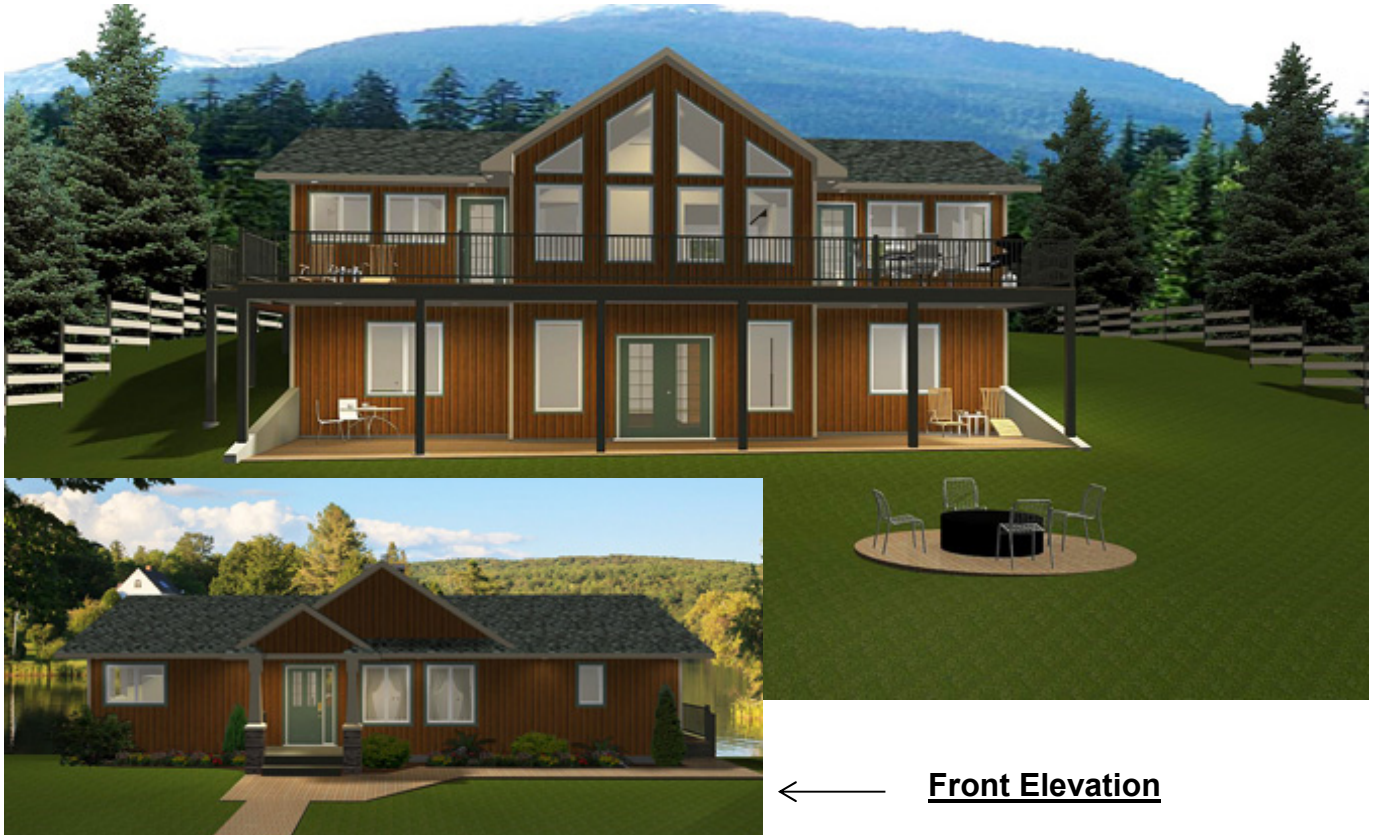
A western Canadian company from Alberta that designs and ships home plans all across Canada, the US, and Overseas.

For more information about this plan contact the designer at: info@edesignsplans.ca.

Plan #: 2010493 Rear Elevation

www.edesignsplans.ca

Call Us 1-855-675-1800



← **Front Elevation**

Bungalow with Walkout

1350 Sq. Ft. Main Floor

1350 Sq. Ft. Lower Floor

2700 Sq. Ft. Total Living Area

Width: 50'-0"
 Depth: 30'-0" (plus deck)
 Bedrooms: 2
 Bathrooms: 2
 Laundry: Lower Level
 Walk-in Pantry: Yes
 Flex Room/Office: Yes

Plan #: 2010493

Exterior Walls: 2x6 x 8 Ft. (Main Floor)
 Foundation: 9' ICF (Insulated Concrete Form)
 (Other Foundations Available)
 Special Ceilings: Vaulted Great Room
 Fireplace: Yes
 Deck(s): Rear
 Veranda: Yes
 Attached Garage: No
 Finished Basement Plan: No

Bungalow with Walkout Basement. This plan will look great on a city lot or at the lake. This design is not a complicated home to build. With just the great room vaulted, the rest of the home has simple straight lines. From the covered porch, enter the front foyer, and immediately, the great room with its vaulted ceiling and windows from the floor to the ceiling will grab your attention. There is also a wood burning stove for those cooler nights. From the dining area, which is open to the great room and the kitchen, you can access the full width deck in the rear. The very unique kitchen design has a walk through pantry and built-in corner sink. The two large windows allow for lots of natural lighting. There is also a lunch bar facing the dining room. The master bedroom has a walk-in closet and a 4-piece ensuite with a walk-in shower. The office area could become the second bedroom if needed. The lower level has not been developed, but has the same type of windows and doors as the main floor. You could easily put two or three more bedrooms, a bathroom, and a family room in the lower level. The walkout area is underneath the deck above. A very nice home you would be happy to live in for years to come.

PROTECTED BY COPYRIGHT LAWS.
 PROPERTY OF **E-DESIGNS PLANS INC.**

E-Designs Plans Inc.

A western Canadian company from Alberta that designs and ships home plans all across Canada, the US, and Overseas.

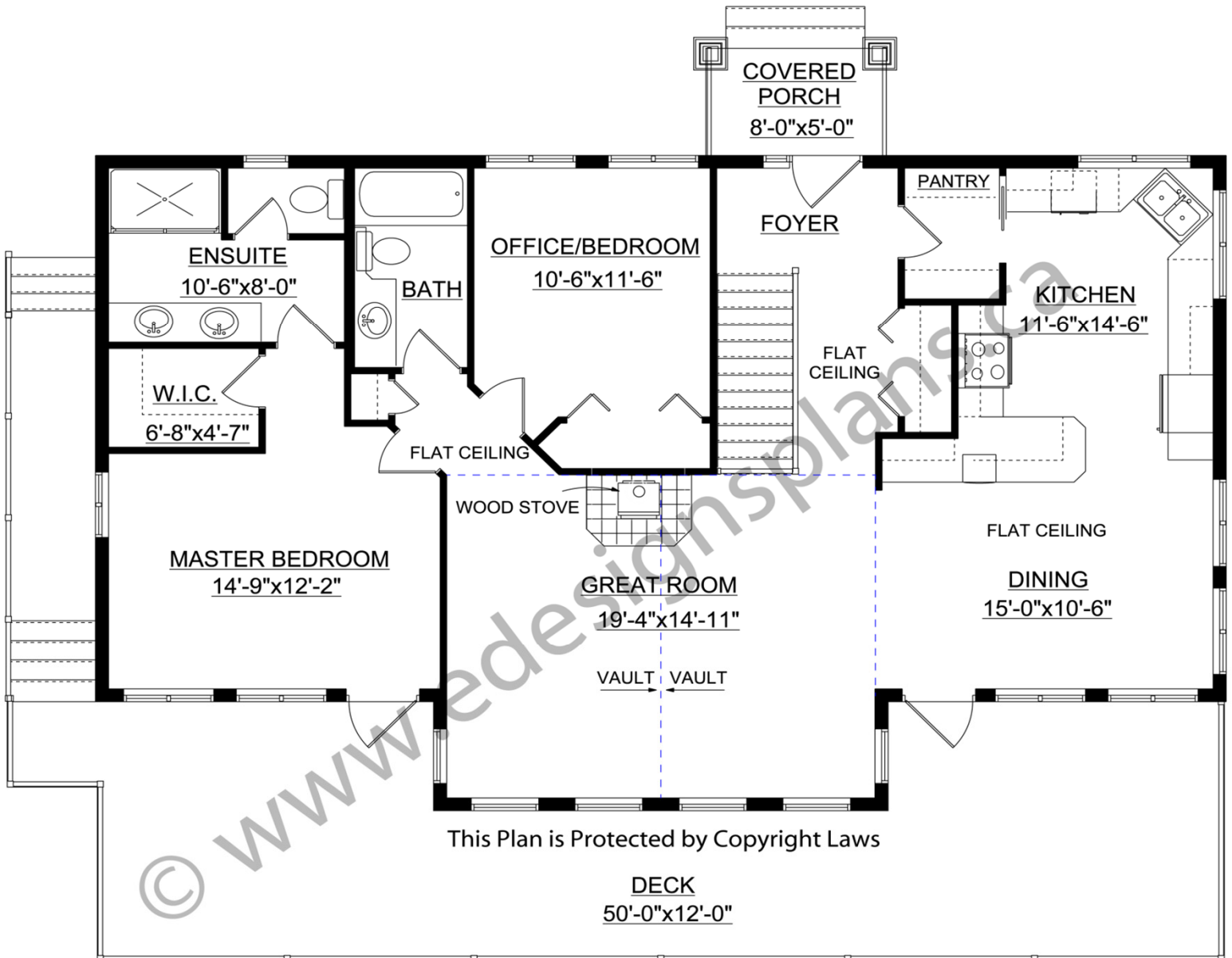
For more information about this plan contact the designer at: info@edesignsplans.ca.

Plan 2010493

www.edesignsplans.ca

Call Us 1-855-675-1800

Main Floor



This Plan is Protected by Copyright Laws

PROTECTED BY COPYRIGHT LAWS.
PROPERTY OF **E-DESIGNS PLANS INC.**