

E-Designs Plans Inc.

A western Canadian company from Alberta that designs and ships home plans all across Canada, the US, and Overseas.

For more information about this plan contact the designer at: info@edesignsplans.ca.

Plan #: 2010507 Front Elevation

www.edesignsplans.ca

Call Us 1-855-675-1800



Executive Style Bungalow with 3-Car Garage

Plan #: 2010507

1777 Sq. Ft. Main Floor

1597 Sq. Ft. Lower Floor

3374 Sq. Ft. Total Living Area

Width: 71'-6"

Depth: 66'-0" (incl. deck)

Bedrooms: 3

Bathrooms: 3

Main Floor Laundry: Yes

Walk-in Pantry: Yes

Office/Den: Yes

Exterior Walls:

Foundation:

Special Ceilings:

Fireplace:

Deck(s):

Veranda:

Attached Garage:

Finished Basement Plan:

2x6 x 9 Ft. (Main Floor)

9' ICF (Insulated Concrete Form)
(Other Foundations Available)

None

Yes

Rear (Partially Covered)

No

Yes (3-Car with 10'x8' Doors)

Yes

This Executive Bungalow has it all. Great curb appeal and a well thought out design. The high covered front entry has an arched window above the door and the foyer has a 13 foot ceiling. Double French doors off the foyer lead to the den which features a large window with a transom. Continue past the open stairwell and you are in the great room, kitchen and dining rooms. The large kitchen features a walk-in pantry, a unique island with a double sink and dishwasher built in. A lunch bar has also been incorporated into the island. There is a china cabinet build-out. Large windows on this side of the home will allow lots of natural lighting. A double garden door leads out to the covered section of the rear deck. There is a corner gas fireplace in the great room. The nice-sized master bedroom also has a double garden door to the rear deck. The lady of the house will love this ensuite with a 6 ft. soaker tub, a 36"x48" shower, and a make-up counter. Check out the size of the walk-in closet. The main bath is located by the entrance to the 3-car garage. No problem parking in this garage with the 10'x8' overhead doors. The laundry room is spacious with a large window, which makes it nice and bright. It has a laundry sink with base and upper cabinets for extra storage. There are two closets in the laundry room for storing seasonal clothing. The lower level has been developed with two large bedrooms, both with big closets, and a 4 piece bath is located between them. If you need to prepare a meal or do some canning, there is also a small kitchen with a cold storage room. The mechanical room can also serve as a storage room. The family/rec room has lots of room. Move into this nicely designed plan and call it your "Home."

PROTECTED BY COPYRIGHT LAWS.
PROPERTY OF **E-DESIGNS PLANS INC.**

E-Designs Plans Inc.

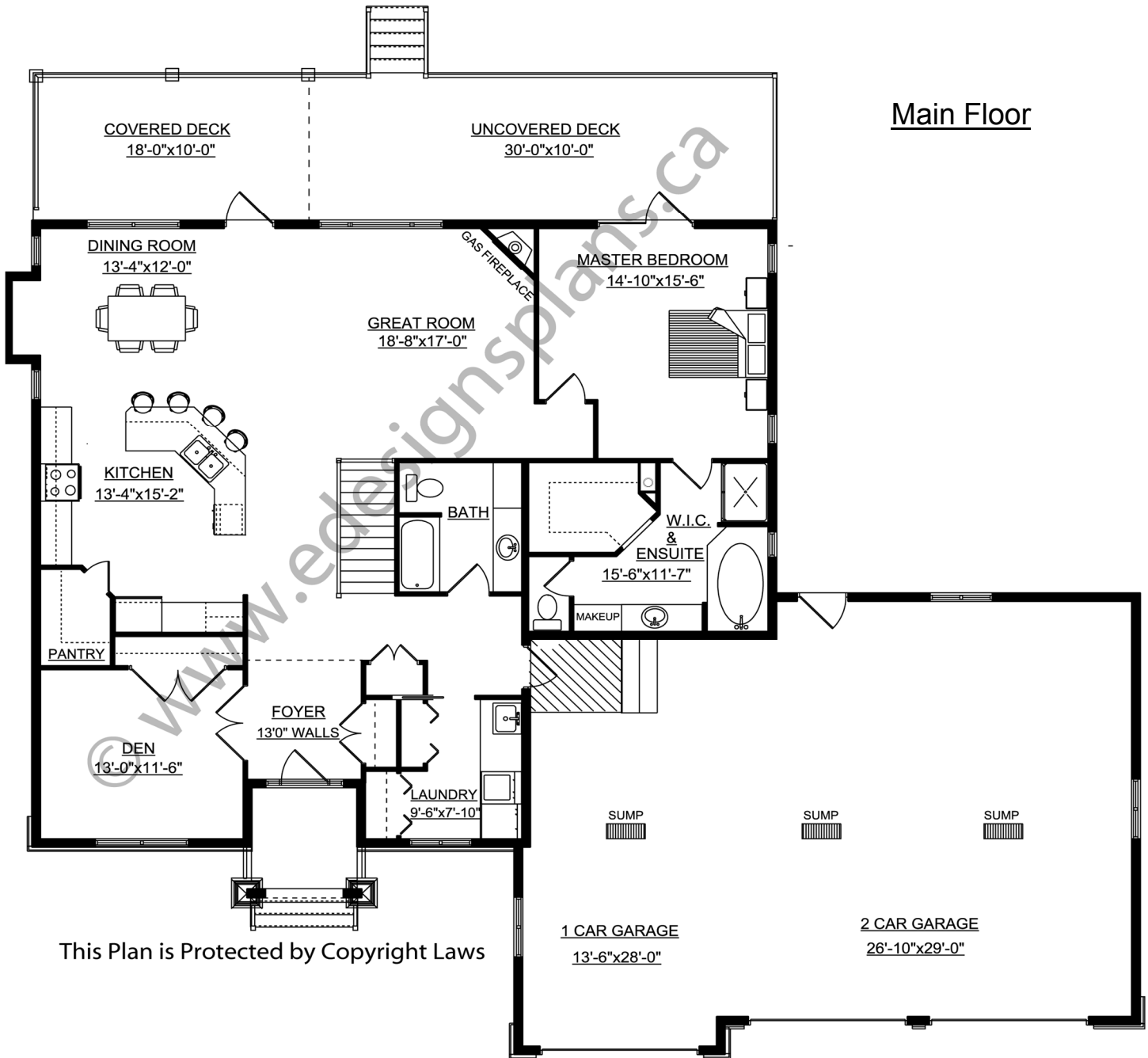
A western Canadian company from Alberta that designs and ships home plans all across Canada, the US, and Overseas.

For more information about this plan contact the designer at: info@edesignsplans.ca.

Plan 2010507

www.edesignsplans.ca

Call Us 1-855-675-1800



Main Floor

This Plan is Protected by Copyright Laws

PROTECTED BY COPYRIGHT LAWS.
PROPERTY OF **E-DESIGNS PLANS INC.**

E-Designs Plans Inc.

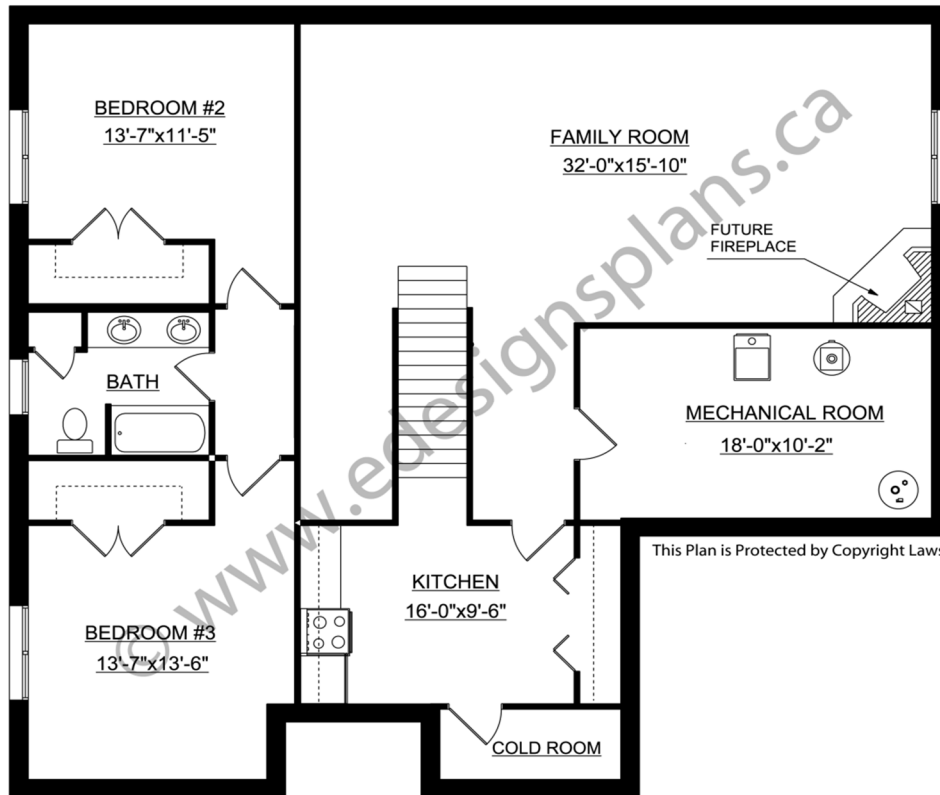
A western Canadian company from Alberta that designs and ships home plans all across Canada, the US, and Overseas.

For more information about this plan contact the designer at: info@edesignsplans.ca.

Plan 2010507

www.edesignsplans.ca

[Call Us 1-855-675-1800](tel:1-855-675-1800)



Basement