

E-Designs Plans Inc.

A western Canadian company from Alberta that designs and ships home plans all across Canada, the US, and Overseas.

For more information about this plan contact the designer at: info@edesignsplans.ca.

Plan #: 2010510 Front Elevation

www.edesignsplans.ca

Call Us 1-855-675-1800



Bungalow with 2-Car Angled Garage

1907 Sq. Ft. Main Floor

220 Sq. Ft. Mudroom

2127 Sq. Ft. Total Living Area

Width: 109'-10"
Depth: 59'-0"
Bedrooms: 2
Bathrooms: 3
Main Floor Laundry: Yes
Walk-in Pantry: Yes
Flex Room/Office: Yes

Plan #: 2010510

Exterior Walls: 2x6 x 9 Ft. (Main Floor)
Foundation: 9'-4" ICF (Insulated Concrete Form)
(Other Foundations Available)
Special Ceilings: Vaulted Great Room/Foyer
Fireplace: Yes
Deck(s): Rear
Veranda: Yes (Covered)
Attached Garage: Yes (2-Car with 10'x8' Doors)
Finished Basement Plan: No

Bungalow with 2-Car Angled Garage. This well thought out home design has everything you could ask for. The front has great curb appeal. Whether its in the country or a large city lot, it will give your guest that warm welcome feeling. The large covered veranda leads into the open front foyer with a vaulted ceiling and a large window built in the gable. Another vault runs from front to back over the front entry and the great room. The great room also has an inverted vault with large windows. A gas fireplace will add that extra warmth on those cooler winter nights. The oversized garage has lots of room for storage and a working area. The mudroom features a two-piece bath and an entrance into the basement. Enter from the mudroom into a flex room which is separated from the great room with a double french door. The walk-through pantry is perfect when bringing in groceries. The large kitchen is open to the great room and the dining room. The dining room has lots of windows for natural lighting, and a french door leads you onto the rear deck. The main floor laundry is centrally located for easy access. A large guest bedroom is located across from the spacious main bath. The master bedroom has lots of room, even for a sitting area. Check out the walk-in closet for space. The three-piece ensuite features a 60"x48" shower. There is a nice open staircase to access the basement area. The basement has a mechanical room and the rest is undeveloped so you can finish it the way you would like. A great floor plan that will give you years of enjoyment.

PROTECTED BY COPYRIGHT LAWS.
PROPERTY OF **E-DESIGNS PLANS INC.**

E-Designs Plans Inc.

A western Canadian company from Alberta that designs and ships home plans all across Canada, the US, and Overseas.

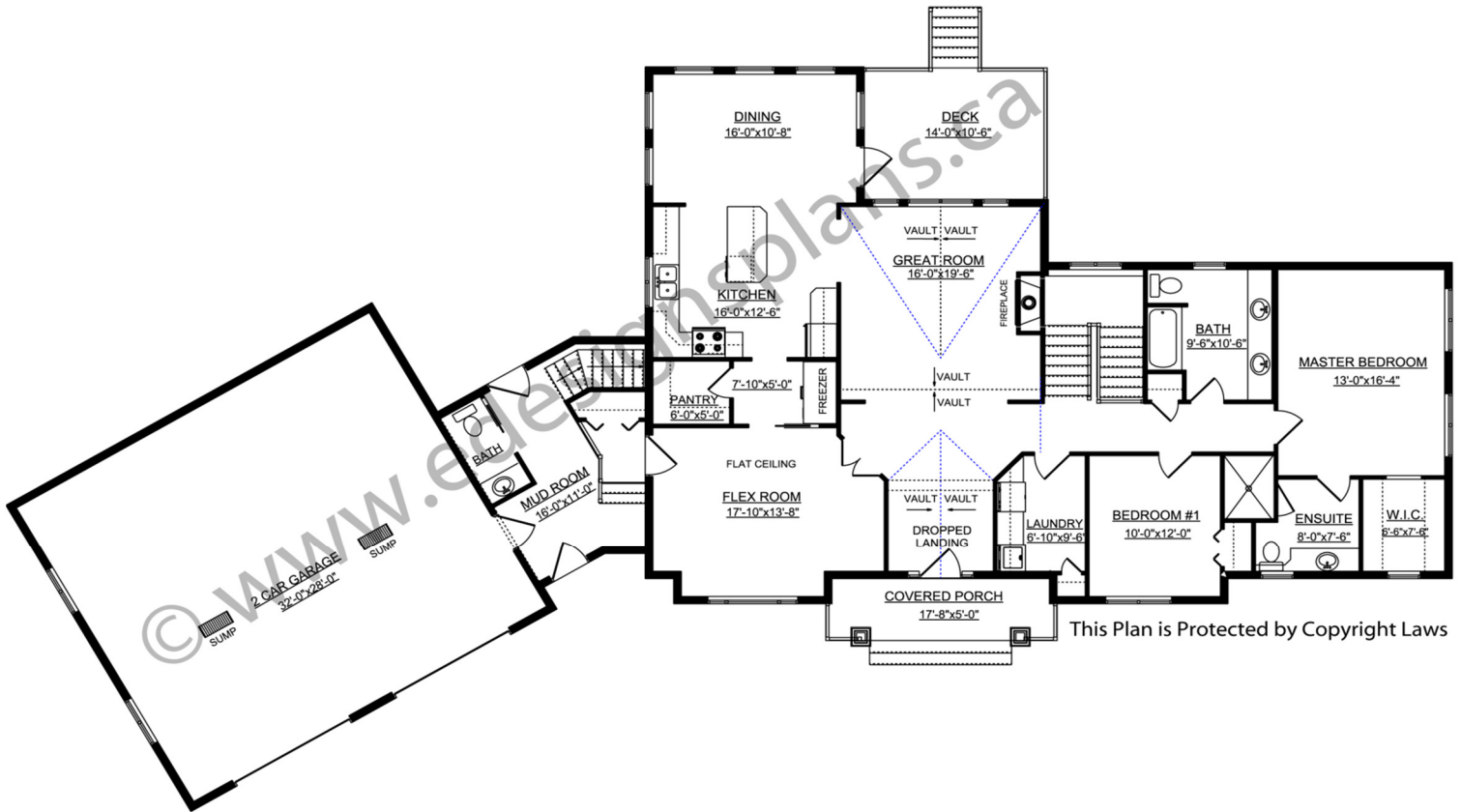
For more information about this plan contact the designer at: info@edesignsplans.ca.

Plan 2010510

www.edesignsplans.ca

[Call Us 1-855-675-1800](tel:1-855-675-1800)

Main Floor



This Plan is Protected by Copyright Laws

PROTECTED BY COPYRIGHT LAWS.
PROPERTY OF **E-DESIGNS PLANS INC.**