

# E-Designs Plans Inc.

A western Canadian company from Alberta that designs and ships home plans all across Canada, the US, and Overseas.

For more information about this plan contact the designer at: [info@edesignsplans.ca](mailto:info@edesignsplans.ca).

**Plan #: 2010514 Front Elevation**

[www.edesignsplans.ca](http://www.edesignsplans.ca)

[Call Us 1-855-675-1800](tel:1-855-675-1800)



**PLAN IS SIMILAR TO:            2009486**

## **Bungalow with 2-Car Garage**

**2435 Sq. Ft. Main Floor**

Width:                            87'-0"  
Depth:                            50'-0" (plus deck)  
Bedrooms:                        3  
Bathrooms:                        3  
Main Floor Laundry:            Yes  
Walk-in Pantry:                  Yes  
Office/Den:                        No

## **Plan #: 2010514**

Exterior Walls:                    2x6 x 9 Ft. (Main Floor)  
Foundation:                        9'-4" ICF (Insulated Concrete Form)  
    (Other Foundations Available)  
Special Ceilings:                    Vaulted Great Room  
Fireplace:                            No  
Deck(s):                              Rear  
Veranda:                              Yes  
Attached Garage:                  Yes (2-Car with 10'x8' Doors)  
Finished Basement Plan:        No

**Spacious 2435 Sq. Ft. Bungalow** with the look of a ranch style. This estatey looking home would be perfect for a country setting as well as a large city lot. The 2-car garage is disguised as part of the main house. The gable roofs, pillars, brick accents and detailing on the windows make this home stand out from the rest. The covered front veranda gives you a welcoming feeling. From the front entry, you will see the openness of the great room and the spacious kitchen area. The great room and front entry are vaulted. The U-Shaped kitchen has a walk-in pantry and a working island with a lunch bar. Enjoy the outdoors on the large rear deck. For those larger gatherings, there is a large formal dining room. The master bedroom features a "Trayed" ceiling, a 5-piece ensuite, walk-in closet, and access to the rear deck. The two spare rooms are a nice size with plenty of closet space. The mudroom from the garage also has a laundry area. Dad will surely love this 2-car garage with 10'x8' doors. There is also an area for a workshop. All in all, a beautiful home plan.

**PROTECTED BY COPYRIGHT LAWS.  
PROPERTY OF *E-DESIGNS PLANS INC.***

# E-Designs Plans Inc.

A western Canadian company from Alberta that designs and ships home plans all across Canada, the US, and Overseas.

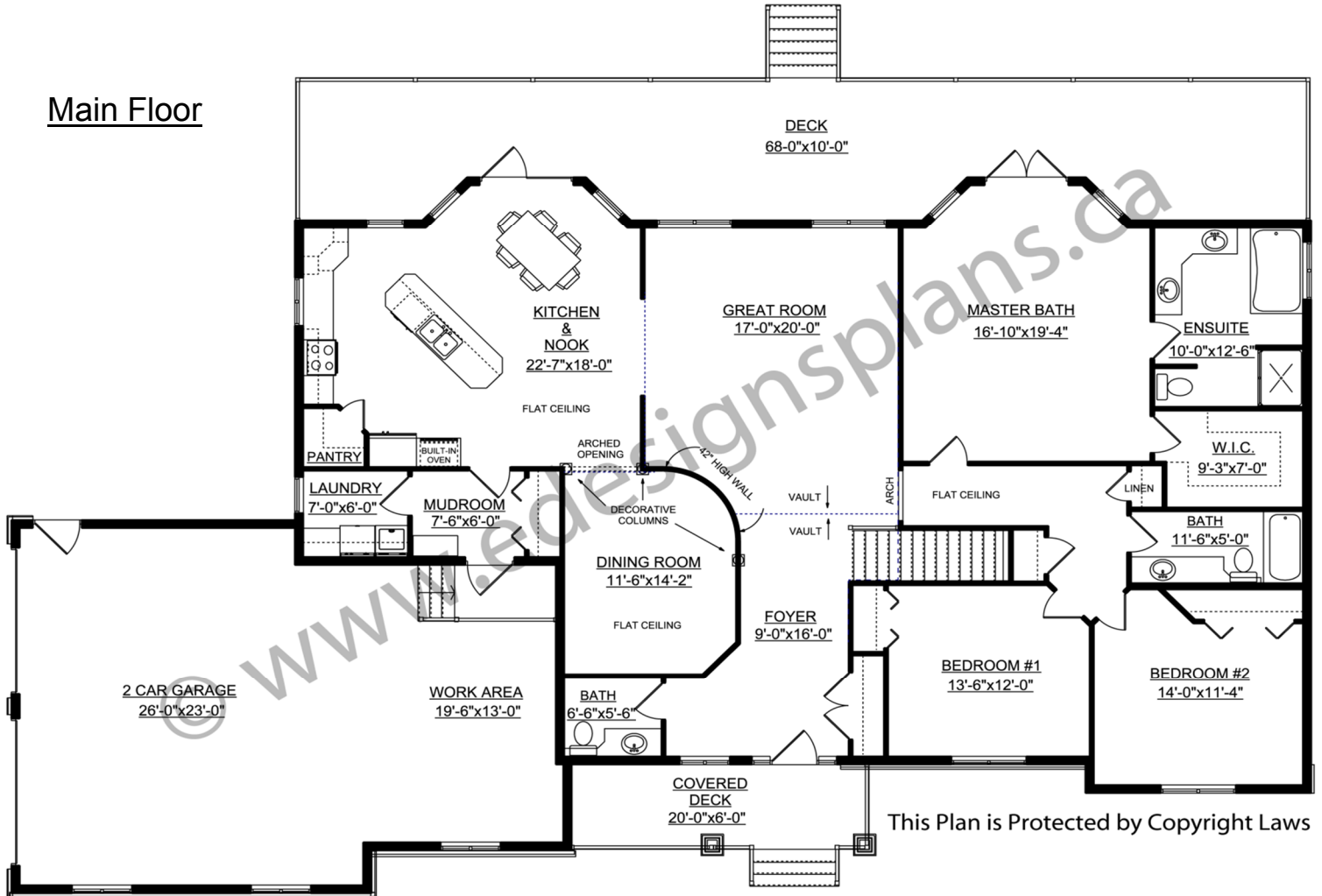
For more information about this plan contact the designer at: [info@edesignsplans.ca](mailto:info@edesignsplans.ca).

Plan 2010514

[www.edesignsplans.ca](http://www.edesignsplans.ca)

Call Us 1-855-675-1800

## Main Floor



This Plan is Protected by Copyright Laws

PROTECTED BY COPYRIGHT LAWS.  
PROPERTY OF **E-DESIGNS PLANS INC.**