

E-Designs Plans Inc.

A western Canadian company from Alberta that designs and ships home plans all across Canada, the US, and Overseas.

For more information about this plan contact the designer at: info@edesignsplans.ca.

Plan #: 2010519 Front Elevation

www.edesignsplans.ca

Call Us 1-855-675-1800



Rear Elevation

Ranch Style Bungalow with Walkout

2176 Sq. Ft. Main Floor

1950 Sq. Ft. Basement

4126 Sq. Ft. Total Living Area

Width: 88'-0"

Depth: 55'-0"

Bedrooms: 4

Bathrooms: 4

Main Floor Laundry: Yes

Walk-in Pantry: Yes

Flex Room/Office: Yes

Plan #: 2010519

Exterior Walls:

Foundation:

Special Ceilings:

Fireplace:

Deck(s):

Veranda:

Attached Garage:

Finished Basement Plan:

2x6 x 9 Ft. (Main Floor)

9' ICF (Insulated Concrete Form)
(Other Foundations Available)

Vaulted Great Room/Foyer
Trayed Ceiling Master Bedroom

Yes

Front, Side & Rear (Covered)

Yes

Yes (3-Car with 10'x8' Doors)

Yes

Ranch Style Bungalow with Walkout: This estate looking home would be perfect for a country setting as well as a large city lot. The 3-car garage is disguised as part of the main house. The gable roofs, pillars, brick accents, and detailing on the windows make this home stand out from the rest. The covered front veranda gives you a welcoming feeling. From the front entry you will see the openness of the great room and the spacious kitchen area. The great room and front entry are vaulted. The great room is open to the family room below, and features a fireplace. The U-Shaped kitchen has a walk-in pantry and a working island with a lunch bar. For those larger gatherings, there is a large formal dining room. The master bedroom features a "Trayed" ceiling, a 5-piece ensuite, walk-in closet, and access to the rear deck. The two spare rooms are a nice size with plenty of closet space. The mudroom from the garage also has a laundry area and a 3-piece bath. Dad will surely love this 3-car garage with three 10'x8' doors and a separate workshop area. Enjoy the outdoors on the large rear covered deck. The covered decks wrap around the side to the front covered veranda. This plan also has a finished basement with a spare bedroom, exercise room, theater room, storage, and a very large rec room with a wet bar area and room for a wood stove. Because this is a walkout plan, the windows are the same size as the main floor, which make the rooms nice and bright. All in all, a beautiful home plan.

E-Designs Plans Inc.

A western Canadian company from Alberta that designs and ships home plans all across Canada, the US, and Overseas.

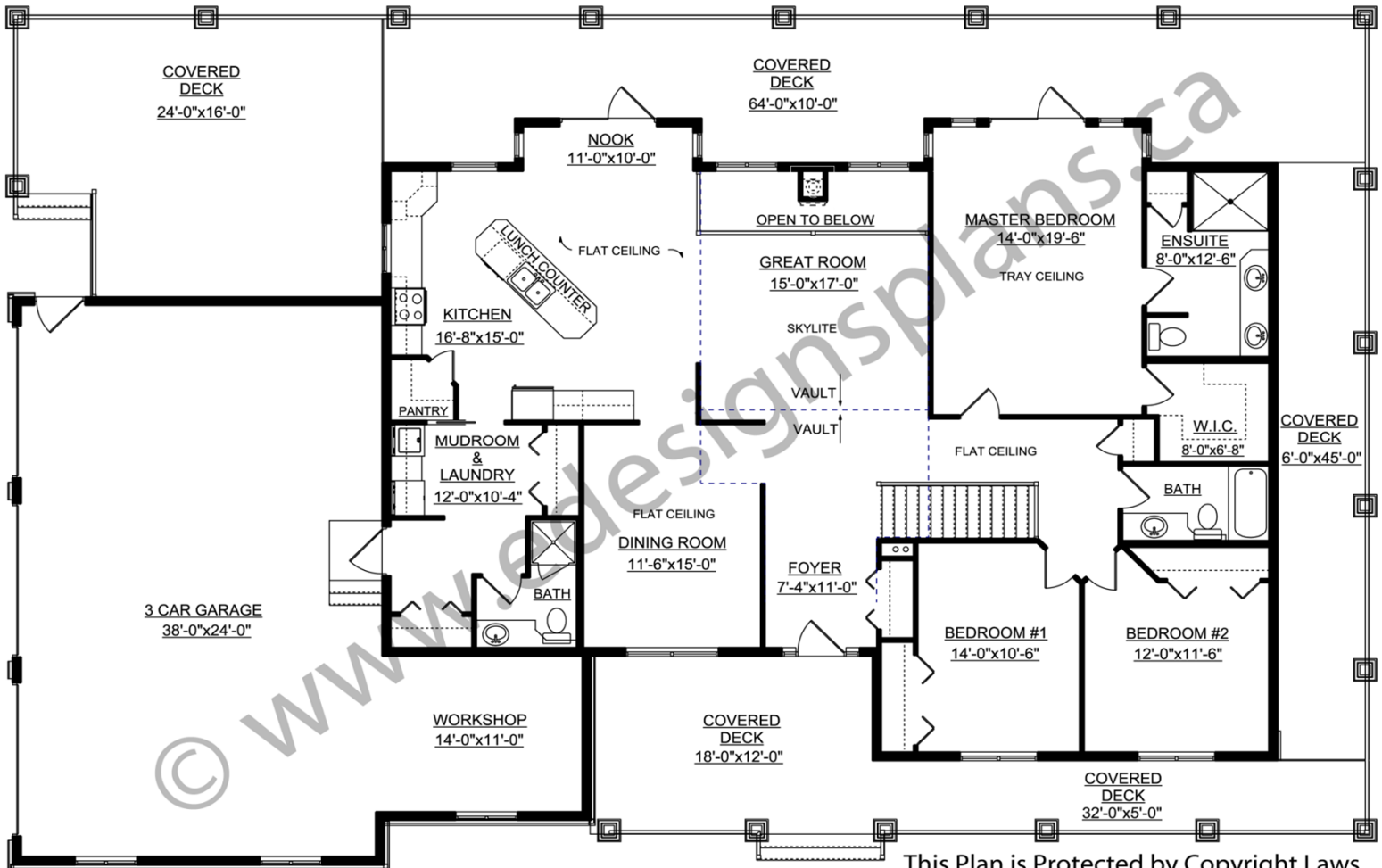
For more information about this plan contact the designer at: info@edesignsplans.ca.

Plan 2010519

www.edesignsplans.ca

Call Us 1-855-675-1800

Main Floor



This Plan is Protected by Copyright Laws

PROTECTED BY COPYRIGHT LAWS.
PROPERTY OF **E-DESIGNS PLANS INC.**

E-Designs Plans Inc.

A western Canadian company from Alberta that designs and ships home plans all across Canada, the US, and Overseas.

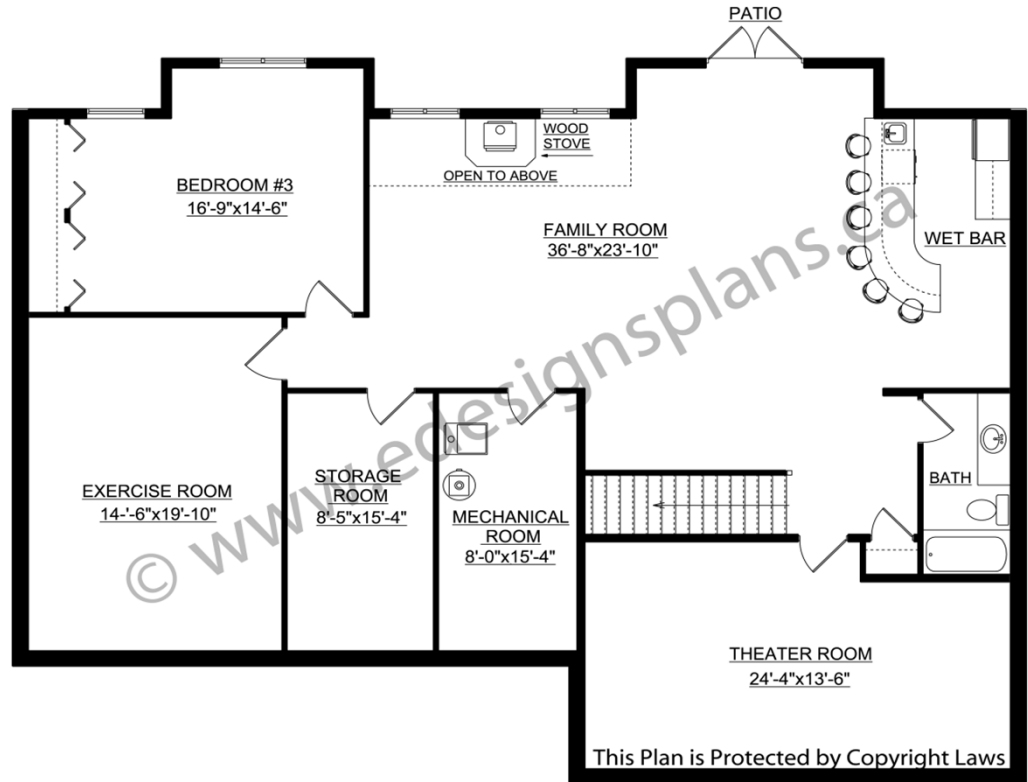
For more information about this plan contact the designer at: info@edesignsplans.ca.

Plan 2010519

www.edesignsplans.ca

[Call Us 1-855-675-1800](tel:1-855-675-1800)

Walkout Basement



PROTECTED BY COPYRIGHT LAWS.
PROPERTY OF **E-DESIGNS PLANS INC.**