

# *E-Designs* *Plans Inc.*

A western Canadian company from Alberta that designs and ships home plans all across Canada, the US, and Overseas.

For more information about this plan contact the designer at: [info@edesignsplans.ca](mailto:info@edesignsplans.ca).

**Plan #: 2010523 Front Elevation**

[www.edesignsplans.ca](http://www.edesignsplans.ca)

**Call Us 1-855-675-1800**



## **Ranch Style Bungalow** **2409 Sq. Ft. Main Floor**

Width: 89'-0"  
Depth: 55'-0"  
Bedrooms: 5  
Bathrooms: 3  
Main Floor Laundry: Yes  
Walk-in Pantry: Yes  
Office/Flex Room: Yes

## **Plan #: 2010523**

Exterior Walls: 2x6 x 8 Ft. (Main Floor)  
Foundation: 4' Crawl Space  
(Other Foundations Available)  
Special Ceilings: Vaulted  
Fireplace: No  
Deck(s): Rear (Covered)  
Veranda: Front (Covered)  
Attached Garage: Yes (2-Car with 10'x8' Doors)  
Finished Basement Plan: No

**This 2409 Sq. Ft. Ranch Style Bungalow** has everything you need in a country home. The exterior, with its different roof lines and pitches along with a covered front veranda, gives this home a warm welcome country feeling. The great room has a vaulted ceiling with a plant ledge in the centre. The great room is open to the dining room and kitchen. Double garden doors from the dining room lead onto a large covered rear deck. The large country kitchen features a walk-in pantry, phone desk, a lunch counter and ample cabinet and counter space. All four bedrooms are a nice size. The flex room could be used as an extra bedroom, exercise room, craft room, etc. The large master bedroom has two closets and a five piece bath. The laundry room has a large window, counter space, and upper cabinets. There is a two piece bath off the garage entrance, so no need to enter the main part of the house when working in the garage or outdoors. The oversized two car garage has room for a work bench and still room for a full size truck. The two overhead doors are 10'x8' high. The boxed out window has been added to break up the wall from the front. This plan has a 4' crawl space foundation but could easily have a full or walk-out basement.

PROTECTED BY COPYRIGHT LAWS.  
PROPERTY OF ***E-DESIGNS PLANS INC.***

# E-Designs Plans Inc.

A western Canadian company from Alberta that designs and ships home plans all across Canada, the US, and Overseas.

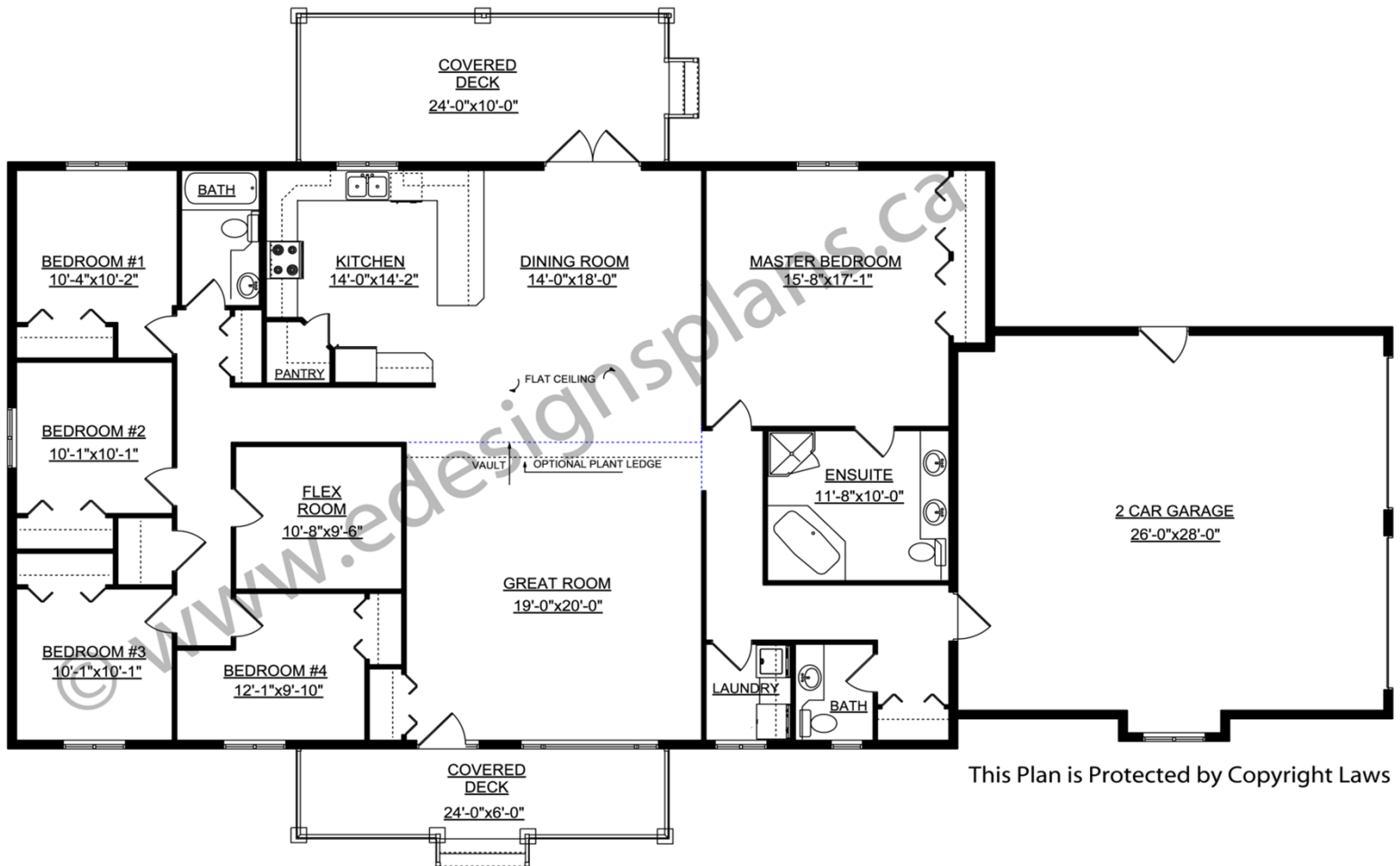
For more information about this plan contact the designer at: [info@edesignsplans.ca](mailto:info@edesignsplans.ca).

Plan 2010523

[www.edesignsplans.ca](http://www.edesignsplans.ca)

Call Us 1-855-675-1800

## Main Floor



This Plan is Protected by Copyright Laws

PROTECTED BY COPYRIGHT LAWS.  
PROPERTY OF **E-DESIGNS PLANS INC.**