

E-Designs Plans Inc.

A western Canadian company from Alberta that designs and ships home plans all across Canada, the US, and Overseas.

For more information about this plan contact the designer at: info@edesignsplans.ca.

Plan #: 2010526 Front Elevation

www.edesignsplans.ca

Call Us 1-855-675-1800



Rear Elevation



Bungalow with Walkout Basement

Plan #: 2010526

1668 Sq. Ft. Main Floor

1408 Sq. Ft. Walkout Basement

3076 Sq. Ft. Total Living Area

Width: 86'-6"
 Depth: 48'-6" (plus deck)
 Bedrooms: 4
 Bathrooms: 4
 Main Floor Laundry: Yes
 Walk-in Pantry: Yes
 Office/Den: No

Exterior Walls: 2x6 x 9 Ft. (Main Floor)
 Foundation: 9' ICF (Insulated Concrete Form) (Other Foundations Available)
 Special Ceilings: Vaulted
 Fireplace: Yes
 Deck(s): Rear (Partially Covered)
 Veranda: Front (Covered)
 Attached Garage: Yes (3-Car with 10'x9' Doors)
 Finished Basement Plan: Yes

Bungalow Plan with over 3000 Sq. Ft. of Living Space. Room for everyone! This home will look great on an acreage, farm or large city lot. This plan has all the extras. The front exterior has stone accents, multiple roof lines and a covered veranda. Upon entering the foyer you can feel the warmth of the home. The great room and foyer have vaulted ceilings. An open staircase leads to the developed walkout basement. Note the interior and exterior fireplace. You can enjoy the heat from the fireplace from the great room or while using the covered rear deck. The large "L" shaped kitchen with a walk-in pantry is open to the great room and dining room. It also features the sink and dishwasher in the island, plus a lunch bar. Access the rear deck from the dining room or master bedroom. There is a laundry room and a 2-piece bath off the mudroom. The large master bedroom has a walk-in closet and a 4-piece bath. A 3-piece bath is located next to the guest room. There is no shortage of room in this 3-car garage with three 10'x9' overhead doors. Room for full sized pickups and still room for a work area. Need extra room for entertaining? Not a problem with the huge family/media room downstairs. The wood burning fireplace will keep it warm on those cold winter days. The possibilities are endless for the size of this room. Things like a big screen TV, pool table and more. There are two more large bedrooms, a cold storage, a large 3-piece bath, and storage under the stairwell. Access the rear yard through the double garden doors off the family room. The patio is partially covered with the deck above. This is a well laid out home that will make you and your guests feel very much at home.

PROTECTED BY COPYRIGHT LAWS.
 PROPERTY OF **E-DESIGNS PLANS INC.**

E-Designs Plans Inc.

A western Canadian company from Alberta that designs and ships home plans all across Canada, the US, and Overseas.

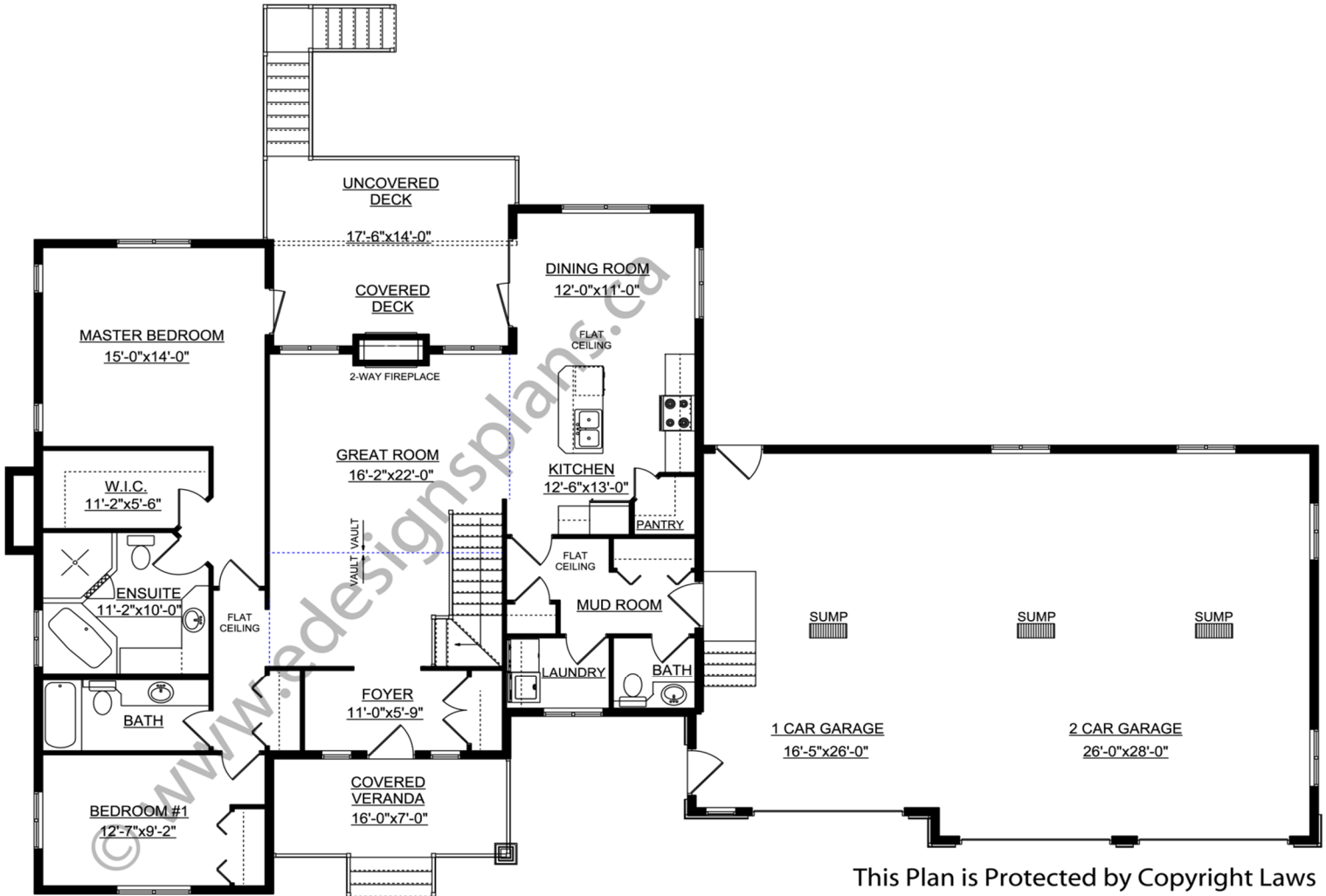
For more information about this plan contact the designer at: info@edesignsplans.ca.

Plan 2010526

www.edesignsplans.ca

Call Us 1-855-675-1800

Main Floor



This Plan is Protected by Copyright Laws

PROTECTED BY COPYRIGHT LAWS.
PROPERTY OF **E-DESIGNS PLANS INC.**

E-Designs Plans Inc.

A western Canadian company from Alberta that designs and ships home plans all across Canada, the US, and Overseas.

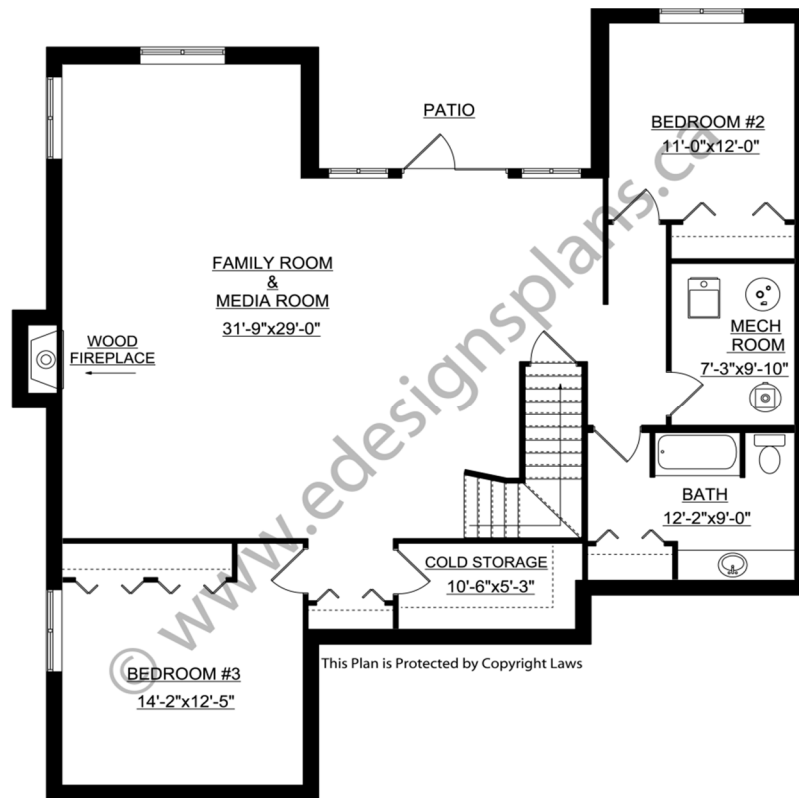
For more information about this plan contact the designer at: info@edesignsplans.ca.

Plan 2010526

www.edesignsplans.ca

[Call Us 1-855-675-1800](tel:1-855-675-1800)

Basement



PROTECTED BY COPYRIGHT LAWS.
PROPERTY OF **E-DESIGNS PLANS INC.**