

E-Designs Plans Inc.

A western Canadian company from Alberta that designs and ships home plans all across Canada, the US, and Overseas.

For more information about this plan contact the designer at: info@edesignsplans.ca.

Plan #: 2011545 Front Elevation

www.edesignsplans.ca

Call Us 1-855-675-1800



Rear Walkout Elevation

Ranch Style Bungalow with Walkout

1904 Sq. Ft. Main Floor

1904 Sq. Ft. Basement

3808 Sq. Ft. Total Living Area

Width: 86'-0"

Depth: 54'-0"

Bedrooms: 5

Bathrooms: 4

Main Floor Laundry: Yes

Walk-in Pantry: Yes

Office/Flex Room: Yes

Plan #: 2011545

Exterior Walls:

Foundation:

Special Ceilings:

Fireplace:

Deck(s):

Veranda:

Attached Garage:

Finished Basement Plan:

2x6 x 9 Ft. (Main Floor)

9' ICF (Insulated Concrete Form)
(Other Foundations Available)

No

Yes (2-Sided)

Rear (Covered)

Yes (Covered)

Yes (2-Car with 10'x8' Doors)

Yes

A Great Looking Ranch Style Bungalow with Walkout Basement & 2-Car Attached Garage: A well laid out home with everything that a country home owner would want. The covered front and rear verandas feature craftsman style posts. An oversized garage with two 10'x8' doors. The mud room is off the laundry room which includes a two-piece bath. Also enter the kitchen via the large walk through pantry. The kitchen, with a working island and lunch counter, is open to the dining room and great room. A two-sided gas fireplace with book shelves divides the dining and living room. Access the covered rear deck from the dining room through a French door. A three-piece bath is located next to the two large bedrooms. The master bedroom features a large walk-in closet and a five-piece ensuite which includes a 48" walk-in shower and corner jetted tub. The finished walkout basement has two large bedrooms, each with a walk-in closet. Check out the "Man Cave" with a wood burning stove, wet bar, and access to the rear covered patio. Let's not forget the huge theater room, perfect for watching the big game. Also, storage, and an exercise or flex room. This home plan has it all covered!

PROTECTED BY COPYRIGHT LAWS.
PROPERTY OF **E-DESIGNS PLANS INC.**

E-Designs Plans Inc.

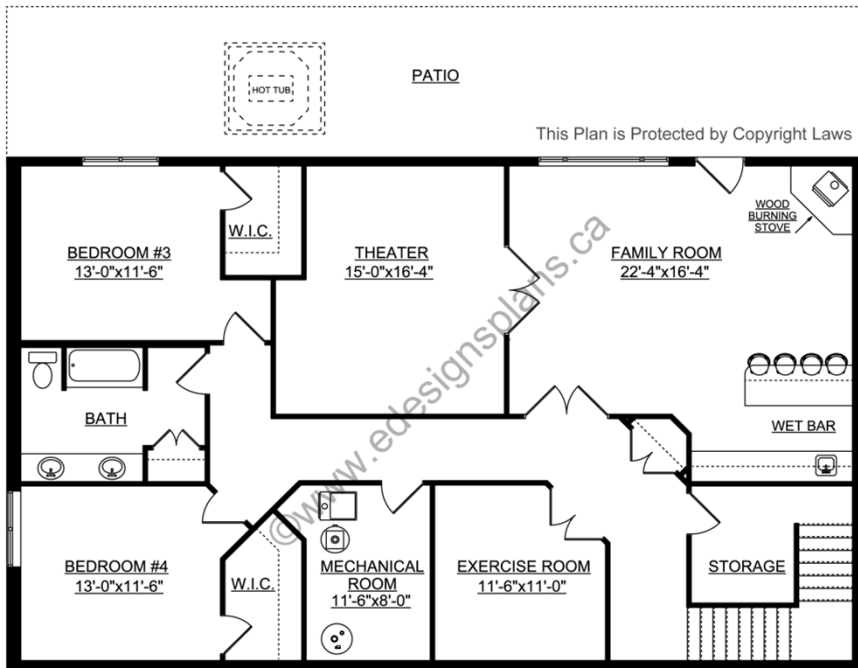
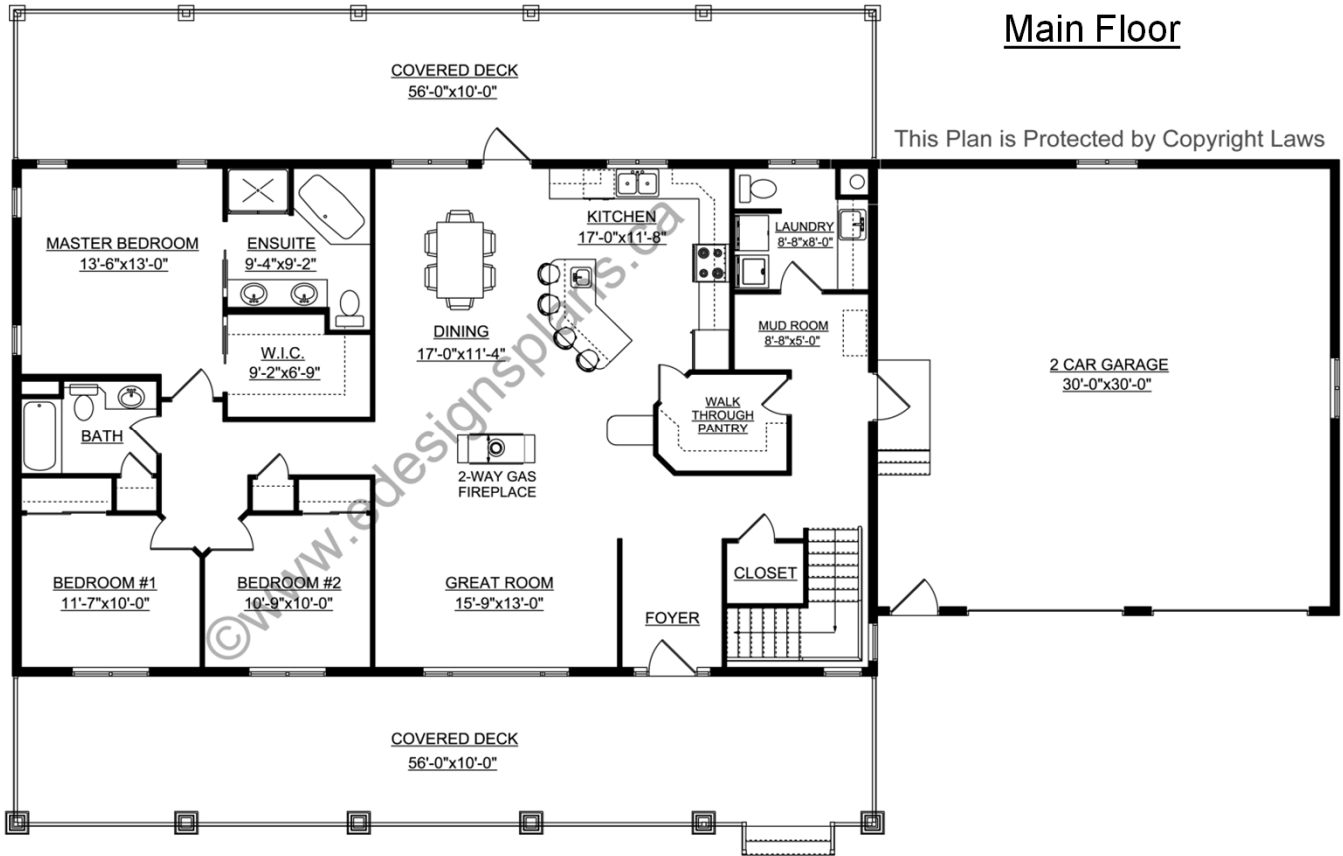
A western Canadian company from Alberta that designs and ships home plans all across Canada, the US, and Overseas.

For more information about this plan contact the designer at: info@edesignsplans.ca.

Plan 2011545

www.edesignsplans.ca

Call Us 1-855-675-1800



PROTECTED BY COPYRIGHT LAWS.
PROPERTY OF **E-DESIGNS PLANS INC.**