

E-Designs *Plans Inc.*

A western Canadian company from Alberta that designs and ships home plans all across Canada, the US, and Overseas.

For more information about this plan contact the designer at: info@edesignsplans.ca.

Plan #: 2011557 Front Elevation

www.edesignsplans.ca

[Call Us 1-855-675-1800](tel:1-855-675-1800)



Bungalow with 2-Car Garage

1664 Sq. Ft. Main Floor

1444 Sq. Ft. Lower Floor

3108 Sq. Ft. Total Living Area

Width: 55'-8"

Depth: 65'-0"

Bedrooms: 3

Bathrooms: 3

Main Floor Laundry: Yes

Walk-in Pantry: Yes

Office/Den: Yes

Plan #: 2011557

Exterior Walls:

Foundation:

Special Ceilings:

Fireplace:

Deck(s):

Veranda:

Attached Garage:

Finished Basement Plan:

2x6 x 9 Ft. (Main Floor)

8' ICF (Insulated Concrete Form)
(Other Foundations Available)

13' High Ceiling in Foyer

Yes

Rear (Partially Covered)

No

Yes (2-Car with 10'x8' Doors)

Yes

Bungalow with 2-Car Garage. This executive bungalow has it all. Great curb appeal and a well thought out design. The high covered front entry has an arched window above the door as the foyer has a 13 foot ceiling. Double french doors off the foyer into the den, which features a large window with a transom. Continue past the open stairwell and you are in the great room, kitchen and dining room. The large kitchen features a walk-in pantry and a unique island with a double sink, dishwasher built in, and a lunch bar. Large windows on this side of the home will allow lots of natural lighting. A double garden door leads out to the covered section of the rear deck. A direct vent gas fireplace in the great room. The master bedroom is a nice size. The lady of the house will love this ensuite with a soaker tub and 42"x60" custom shower. Check out the size of the walk-in closet. The main bath is located by the entrance to the 2-car garage. No problem parking in this garage with 10'x8' overhead doors. The laundry room is spacious with a large window, a laundry sink, plus base and upper cabinets. An extra closet in the laundry room for storing seasonal clothing. The lower level has been developed with two large bedrooms that have a 4-piece bath located between them. If you need to prepare a meal or do some canning, there is a small kitchen with a cold storage room. The furnace room is large enough it can also serve as a storage room. The family/rec room has lots of space for just about anything you want. Move into this nicely designed plan and call it your "Home."

PROTECTED BY COPYRIGHT LAWS.
PROPERTY OF **E-DESIGNS PLANS INC.**

E-Designs Plans Inc.

A western Canadian company from Alberta that designs and ships home plans all across Canada, the US, and Overseas.

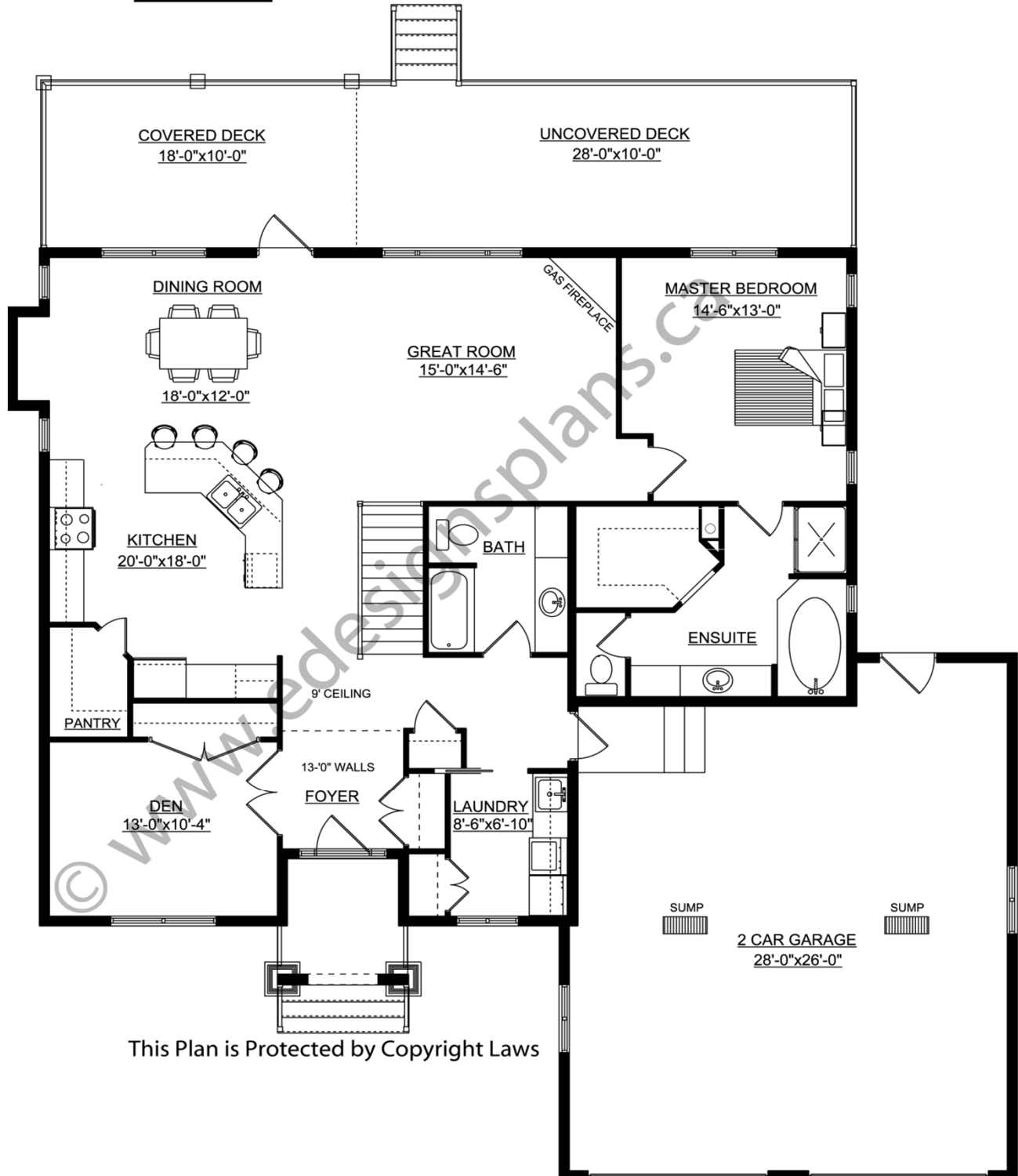
For more information about this plan contact the designer at: info@edesignsplans.ca.

Plan 2011557

www.edesignsplans.ca

Call Us 1-855-675-1800

Main Floor



This Plan is Protected by Copyright Laws

PROTECTED BY COPYRIGHT LAWS.
PROPERTY OF **E-DESIGNS PLANS INC.**

E-Designs Plans Inc.

A western Canadian company from Alberta that designs and ships home plans all across Canada, the US, and Overseas.

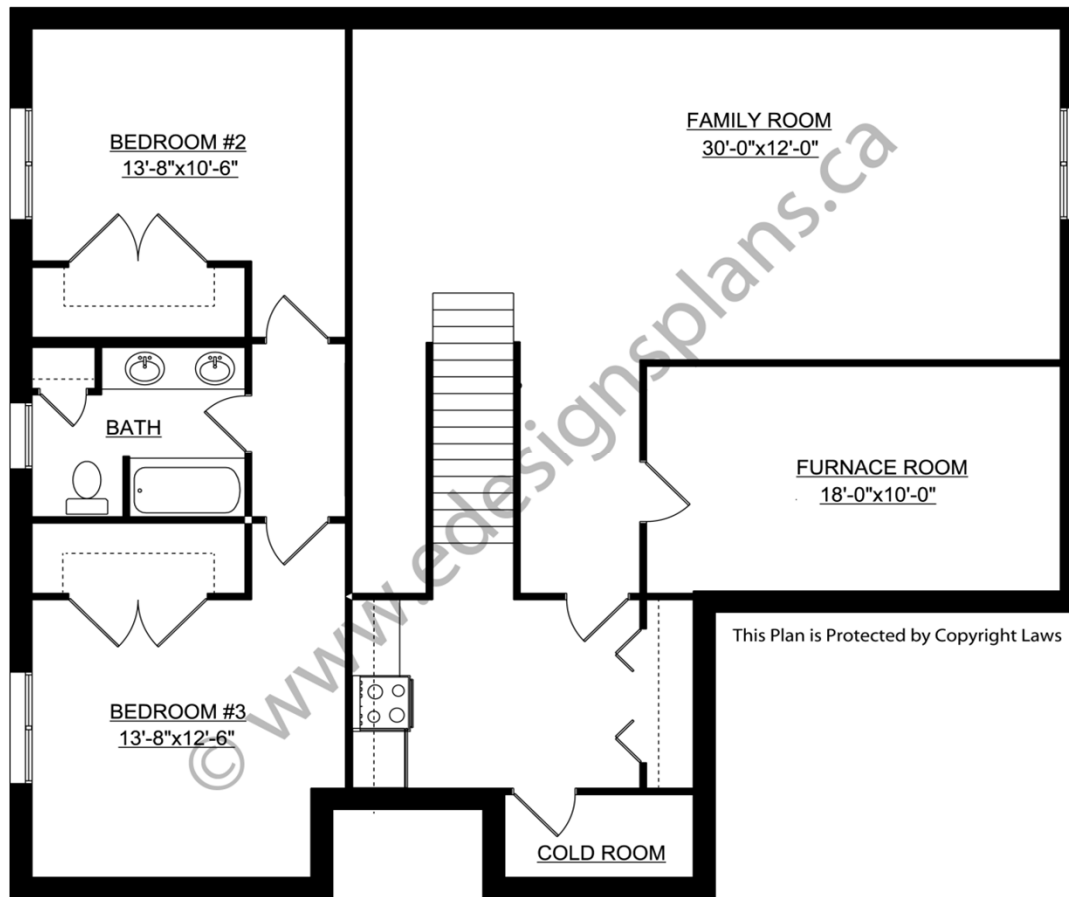
For more information about this plan contact the designer at: info@edesignsplans.ca.

Plan 2011557

www.edesignsplans.ca

[Call Us 1-855-675-1800](tel:1-855-675-1800)

Basement



This Plan is Protected by Copyright Laws