

E-Designs Plans Inc.

A western Canadian company from Alberta that designs and ships home plans all across Canada, the US, and Overseas.

For more information about this plan contact the designer at: info@edesignsplans.ca.

Plan #: 2011559 Front Elevation

www.edesignsplans.ca

Call Us 1-855-675-1800



Ranch Style Bungalow with Angled Garage

Plan #: 2011559

1791 Sq. Ft. Main Floor

Width: 89'-0"

Depth: 55'-0"

Bedrooms: 2

Bathrooms: 2 & a Half Bath

Main Floor Laundry: Yes

Walk-in Pantry: Yes

Office/Flex Room: Yes

Finished Basement Plan: No

Exterior Walls:

Foundation:

Special Ceilings:

Fireplace:

Deck(s):

Veranda:

Attached Garage:

2x6 x 8 Ft. (Main Floor)

Slab on 4' ICF

(Insulated Concrete Form)
(Other Foundations Available)

4-Way Vault

No

Rear Patio

No

Yes (2-Car with 10'x7' Doors)

Ranch Style Bungalow on Slab: Great layout for an acreage, farmhouse or large town lot. Designed as slab on grade foundation makes this plan low to the ground. The covered front entry leads into the foyer which has a 10 ft. ceiling. Off the foyer is the den area which would also make a nice bedroom. Towards the great room, you have an L-shaped kitchen complete with a walk-in pantry and an angled island with lunch bar. The dining area has a bayed section with a double garden door leading to the backyard patio. The kitchen and dining area are open to the great room. All the living area features a vaulted ceiling. A three piece bath is located close to these areas. Down the hallway is a "flex" room with a closet. The laundry room has lots of upper and lower cabinet space; also a built-in laundry sink. The large master bedroom features a walk-in closet and a 3-piece ensuite with a linen closet. From the hallway you enter the angled two-car garage. There is a large mudroom area and the utility room is located here also. There is a two-piece bath located in the utility room. The 30'x26' garage has two 10'x7' doors and the floor is sloped to a center sump. Lots of room in this well designed home plan.

E-Designs Plans Inc.

A western Canadian company from Alberta that designs and ships home plans all across Canada, the US, and Overseas.

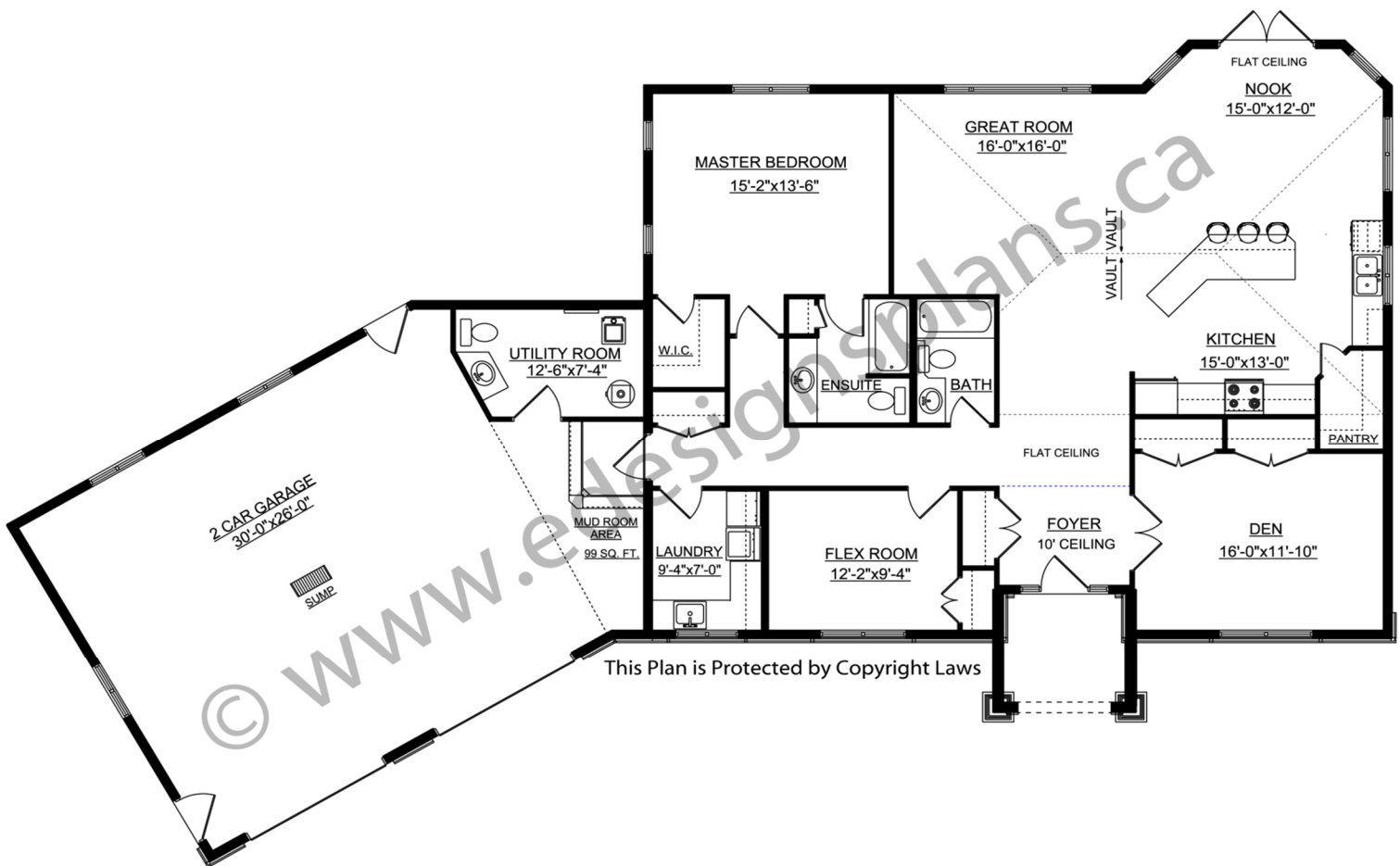
For more information about this plan contact the designer at: info@edesignsplans.ca.

Plan 2011559

www.edesignsplans.ca

[Call Us 1-855-675-1800](tel:1-855-675-1800)

Main Floor



PROTECTED BY COPYRIGHT LAWS.
PROPERTY OF **E-DESIGNS PLANS INC.**