

# E-Designs Plans Inc.

A western Canadian company from Alberta that designs and ships home plans all across Canada, the US, and Overseas.

For more information about this plan contact the designer at: [info@edesignsplans.ca](mailto:info@edesignsplans.ca).

**Plan #: 2011567 Front Elevation**

[www.edesignsplans.ca](http://www.edesignsplans.ca)

**Call Us 1-855-675-1800**



**Rear Elevation**



## **Country Style Bungalow**

1547 Sq. Ft. Main Floor

1380 Sq. Ft. Developed Basement

2927 Sq. Ft. Total Living Area

Width: 57'-0"  
 Depth: 59'-0" (plus deck)  
 Bedrooms: 4  
 Bathrooms: 3  
 Main Floor Laundry: Yes  
 Walk-in Pantry: Yes  
 Office/Den: No

## **Plan #: 2011567**

Exterior Walls: 2x6 x 8 Ft. (Main Floor)  
 Foundation: 8'-6" Concrete Wall  
 (Other Foundations Available)  
 Special Ceilings: Coffered  
 Fireplace: No  
 Deck(s): Rear (Partially Covered)  
 Veranda: Yes (Covered)  
 Attached Garage: Yes (2-Car with 9"x7' Doors)  
 Finished Basement Plan: Yes

**Country Style Bungalow:** This inviting country style home has all the features that you and your family will enjoy for many years to come. A very open and spacious floor plan. A large country-style kitchen with lots of cabinets and counter space, and if that's not enough room, then you'll love the large working island. The dining and great room both have lots of windows and a double garden door leading onto the huge rear deck, which is partially covered. The master bedroom has a walk-in closet and a four-piece ensuite which features a 60" shower. The laundry/mud room has a closet and cabinets over the washer, dryer and sink. The attached double-car garage has two overhead doors and one man door to the rear. The covered veranda would be a great spot to relax, or if you need more room, try the large rear deck. Need more living space? Check out the developed basement. There is a large storage room with two entrances, plus three more bedrooms with large closet space. Centrally located, there is a three-piece bath next to the mechanical room, plus a place for a pool table in the games/media room. There is something for everyone in this plan.

PROTECTED BY COPYRIGHT LAWS.  
 PROPERTY OF **E-DESIGNS PLANS INC.**

# E-Designs Plans Inc.

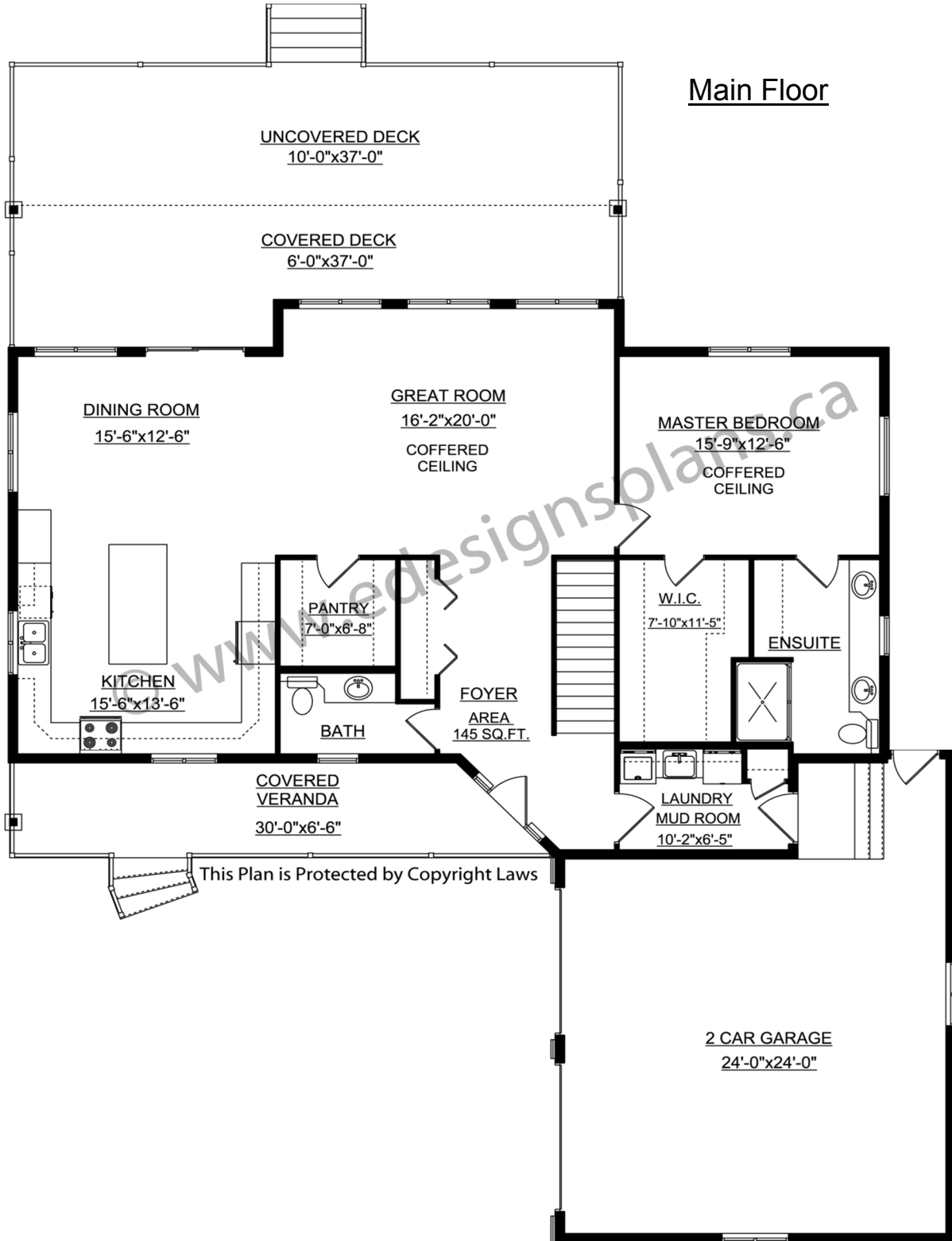
A western Canadian company from Alberta that designs and ships home plans all across Canada, the US, and Overseas.

For more information about this plan contact the designer at: [info@edesignsplans.ca](mailto:info@edesignsplans.ca).

Plan 2011567

[www.edesignsplans.ca](http://www.edesignsplans.ca)

[Call Us 1-855-675-1800](tel:1-855-675-1800)



PROTECTED BY COPYRIGHT LAWS.  
PROPERTY OF **E-DESIGNS PLANS INC.**

# *E-Designs Plans Inc.*

A western Canadian company from Alberta that designs and ships home plans all across Canada, the US, and Overseas.

For more information about this plan contact the designer at: [info@edesignsplans.ca](mailto:info@edesignsplans.ca).

Plan 2011567

[www.edesignsplans.ca](http://www.edesignsplans.ca)

[Call Us 1-855-675-1800](tel:1-855-675-1800)

## Basement

