

E-Designs Plans Inc.

A western Canadian company from Alberta that designs and ships home plans all across Canada, the US, and Overseas.

For more information about this plan contact the designer at: info@edesignsplans.ca.

Plan #: 2011571 Front Elevation

www.edesignsplans.ca

Call Us 1-855-675-1800



Rear Elevation



Country Ranch Style Home **2026 Sq. Ft. Main Floor**

Width: 86'-0"
Depth: 40'-0"
Bedrooms: 3
Bathrooms: 2 & a Half Bath
Main Floor Laundry: Yes
Pantry: Yes
Office/Den: Yes

Plan #: 2011571

Exterior Walls: 2x6 x 9 Ft. (Main Floor)
Foundation: 9' ICF (Insulated Concrete Form)
(Other Foundations Available)
Special Ceilings: Vaulted
Fireplace: Yes
Deck(s): Rear (Partially Covered)
Veranda: Yes (Covered)
Attached Garage: Yes (2-Car with 10'x8' Doors)
Finished Basement Plan: No

A Perfect Ranch Floor Plan with a Country Style Look: Not only does the home look great from the outside, but the interior has been designed to be open and spacious. The front veranda is partially covered and so is the rear deck. The front and the entrance from the garage are both large with three closets. A two-piece bath is conveniently located just off the garage entrance and next to the home office. A laundry room is located close to the kitchen. The ceiling is vaulted in the front foyer, office, kitchen/dining and great room. This unique kitchen has lots of cabinet and counter top space, plus a large working island with a lunch bar. A gas fireplace in the corner of the great room is great for those cooler nights. A French door leads to the rear deck. There are two large bedrooms next to the three-piece bathroom. Double French doors lead into the master bedroom. Here you will find a walk-in closet, a four-piece ensuite with corner spa tub and a corner shower. The basement is not developed so you can design that games room just the way you want it.

PROTECTED BY COPYRIGHT LAWS.
PROPERTY OF **E-DESIGNS PLANS INC.**

E-Designs Plans Inc.

A western Canadian company from Alberta that designs and ships home plans all across Canada, the US, and Overseas.

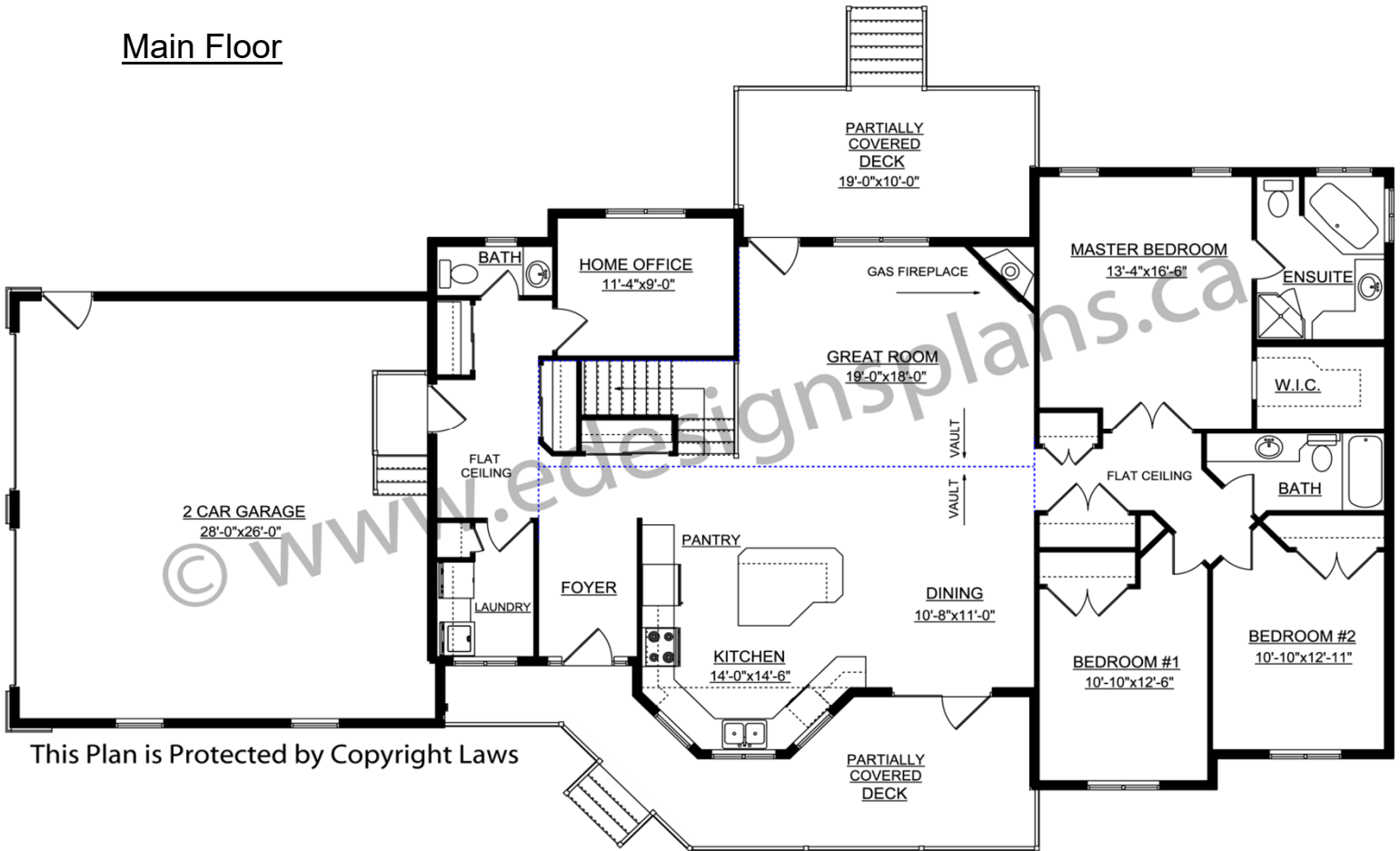
For more information about this plan contact the designer at: info@edesignsplans.ca.

Plan 2011571

www.edesignsplans.ca

Call Us 1-855-675-1800

Main Floor



This Plan is Protected by Copyright Laws

PROTECTED BY COPYRIGHT LAWS.
PROPERTY OF **E-DESIGNS PLANS INC.**