

E-Designs Plans Inc.

A western Canadian company from Alberta that designs and ships home plans all across Canada, the US, and Overseas.

For more information about this plan contact the designer at: info@edesignsplans.ca.

Plan #: 2011580 Front Elevation

www.edesignsplans.ca

[Call Us 1-855-675-1800](tel:1-855-675-1800)



Rear Elevation



Ranch Style Bungalow

2147 Sq. Ft. Main Floor

1823 Sq. Ft. Basement

3970 Sq. Ft. Total Living Area

Width: 102'-0"

Depth: 62'-8"

Bedrooms: 4

Bathrooms: 4

Main Floor Laundry: Yes

Walk-in Pantry: Yes

Office/Den: Yes

Plan #: 2011580

Exterior Walls:

Foundation:

Special Ceilings:

Fireplace:

Deck(s):

Veranda:

Attached Garage:

Finished Basement Plan:

2x6 x 9 Ft. (Main Floor)

9' ICF (Insulated Concrete Form)
(Other Foundations Available)

Vaulted

Yes

Rear (Covered)

Yes (Covered)

Yes (3-Car - 10'x8' & 16'x8' Doors)

Yes

Ranch Style Bungalow - Perfect plan for an acreage or farmhouse. This house plan has all the basics covered and more. When you enter from the covered front veranda there is double French door opening into the home office and the stairwell to the basement. The great room has a vaulted ceiling & a gas fireplace set between two windows. The "L" shaped kitchen has a working island and is open to the dining and great rooms. A double garden door leads out to the large rear deck which has the center portion covered. A walk-through pantry makes putting groceries away easy. A 2-piece bath is conveniently located by the mudroom and garage. Dad will love this oversized 3-car garage which has a small workshop area as well as a storage area. Also, the overhead doors are 8' high. The laundry room, which has a closet, lots of cabinets, and a counter top with a sink, is located by the spare bedroom. A 3-piece bath is also located here. Enter the master bedroom through the double French doors. The large master bedroom features a trayed ceiling and access to the rear deck through double garden doors. It has a 5-piece bath which features a corner spa tub and a 48" shower; also a large walk-in closet. Looking for more space to use? Head down to the finished basement area. Here you will find two more large bedrooms. A 3-piece bath is located next to the mechanical room, which also has a storage area. Check out the theater room. Lots of room for a projection screen TV here. A large wet bar fits well into the family room. This plan has it all.

PROTECTED BY COPYRIGHT LAWS.
PROPERTY OF **E-DESIGNS PLANS INC.**

E-Designs Plans Inc.

A western Canadian company from Alberta that designs and ships home plans all across Canada, the US, and Overseas.

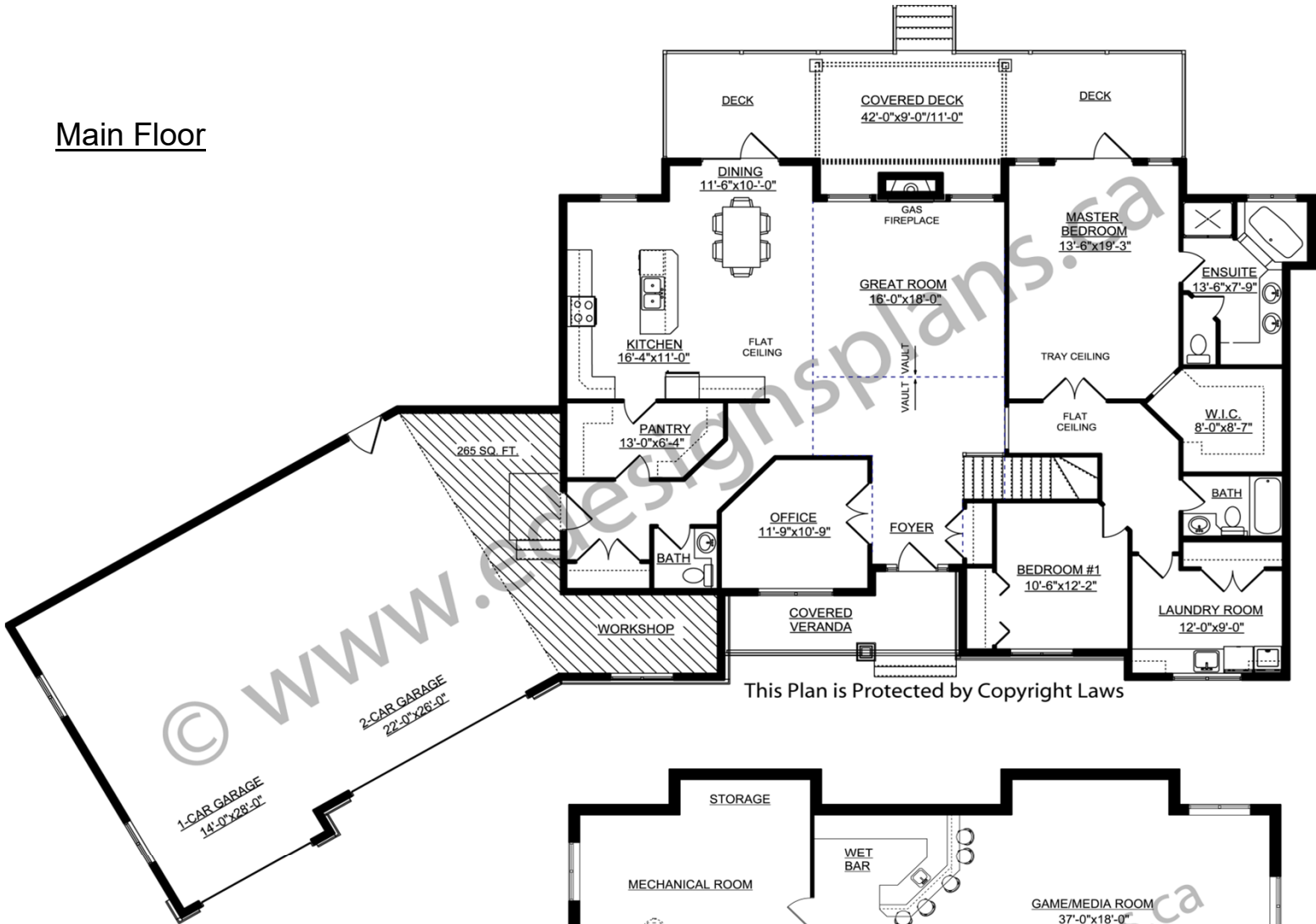
For more information about this plan contact the designer at: info@edesignsplans.ca.

Plan 2011580

www.edesignsplans.ca

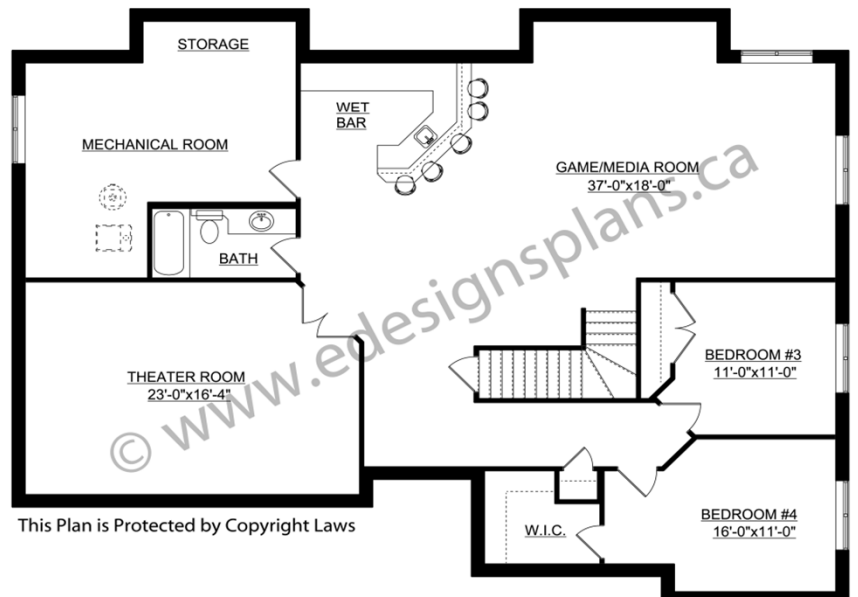
Call Us 1-855-675-1800

Main Floor



This Plan is Protected by Copyright Laws

Basement



This Plan is Protected by Copyright Laws

PROTECTED BY COPYRIGHT LAWS.
PROPERTY OF **E-DESIGNS PLANS INC.**