

E-Designs Plans Inc.

A western Canadian company from Alberta that designs and ships home plans all across Canada, the US, and Overseas.

For more information about this plan contact the designer at: info@edesignsplans.ca.

Plan #: 2011585 Front Elevation

www.edesignsplans.ca

Call Us 1-855-675-1800



Rear Elevation



Ranch Style Bungalow with Walkout

2081 Sq. Ft. Main Floor

1750 Sq. Ft. Walkout Basement

3831 Sq. Ft. Total Living Area

Width: 100'-6"
Depth: 57'-9" (plus deck)
Bedrooms: 4
Bathrooms: 4
Main Floor Laundry: Yes
Walk-in Pantry: Yes

Plan #: 2011585

Exterior Walls: 2x6 x 9 Ft. (Main Floor)
Foundation: 9' ICF (Insulated Concrete Form) (Other Foundations Available)
Special Ceilings: No
Fireplace: Yes
Deck(s): Rear (Partially Covered)
Veranda: Yes (Covered)
Attached Garage: Yes (3-Car - 16'x8' & 10'x8' Doors)
Finished Basement Plan: Yes

Ranch Style Bungalow with Walkout. Great for the acreage, farm or ranch. This home has all the features of a home in the city combined with some of the features found in a country home plan. From the covered veranda, the foyer opens up to a common area that leads off to the bedrooms, dining room and kitchen. The great room is divided off with railing and a wood burning stove is in the corner. The large country-style kitchen has a corner walk-in pantry, a large working island with a lunch counter, and lots of cabinet and counter space. The nook in the bayed area has two garden doors leading out to the covered deck. Double French doors lead into the dining room. A laundry room and a 2-piece bath are located in the mudroom area. From the mudroom you access the covered rear patio (which leads down or up to the patios and decks in the rear) or into the oversized 3-car garage. The overhead doors are 8' high. At the other end of the house you have two large bedrooms, a 3-piece bath and the master bedroom. The master has a bayed out area with a garden door to the rear deck; also a 5-piece ensuite with tub, a 48" shower, along with the walk-in closet make this room just about perfect. Still looking for more room? Then head down to the finished walk-out basement. A separate theater room is directly across from the wet bar in the large family room. A 3-piece bath is also located in between these two rooms. The storage area is located by the mechanical room and the exercise room. There is also a bedroom which could be used for a craft room or an office. There are garden doors to the covered patio from the bedroom and the family room. Another great floor plan.

PROTECTED BY COPYRIGHT LAWS.
PROPERTY OF **E-DESIGNS PLANS INC.**

E-Designs Plans Inc.

A western Canadian company from Alberta that designs and ships home plans all across Canada, the US, and Overseas.

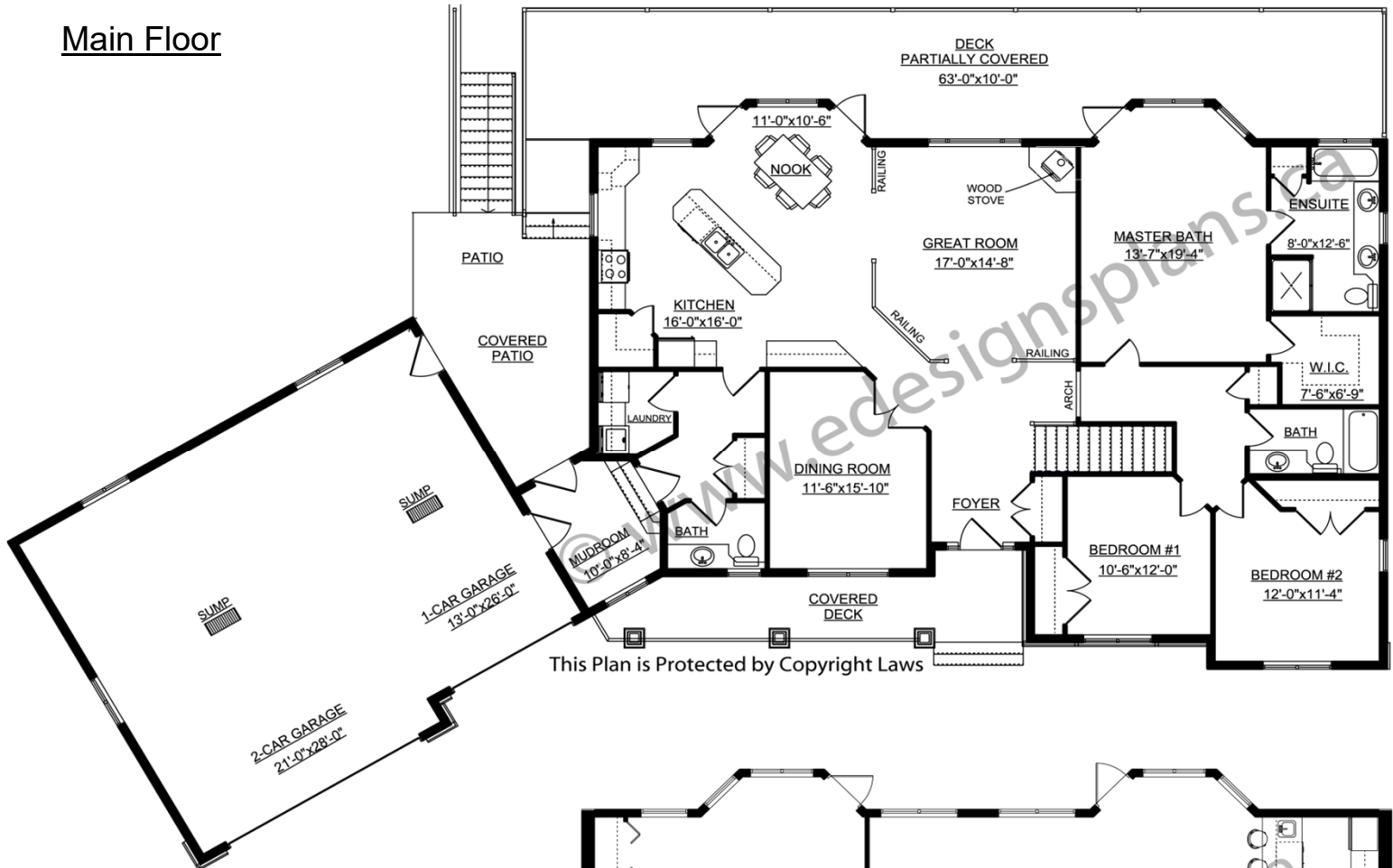
For more information about this plan contact the designer at: info@edesignsplans.ca.

Plan 2011585

www.edesignsplans.ca

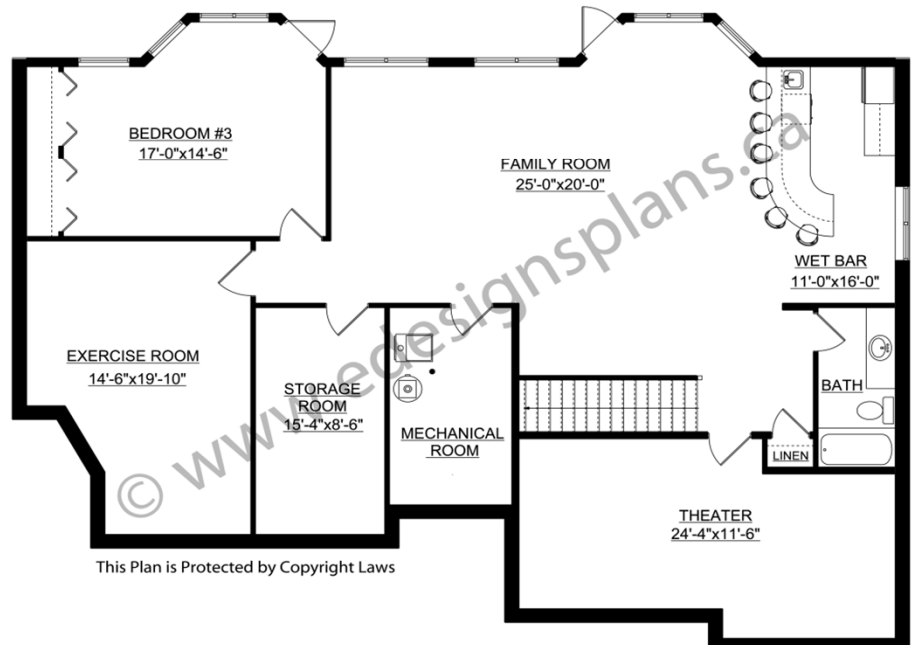
Call Us 1-855-675-1800

Main Floor



This Plan is Protected by Copyright Laws

Basement



This Plan is Protected by Copyright Laws

PROTECTED BY COPYRIGHT LAWS.
PROPERTY OF **E-DESIGNS PLANS INC.**