

E-Designs Plans Inc.

A western Canadian company from Alberta that designs and ships home plans all across Canada, the US, and Overseas.

For more information about this plan contact the designer at: info@edesignsplans.ca.

Plan #: 2011595 Front Elevation

www.edesignsplans.ca

Call Us 1-855-675-1800



Rear Elevation

Country Style Bungalow

2480 Sq. Ft. Main Floor

1515 Sq. Ft. Finished Basement

3995 Sq. Ft. Total Living Area

Width: 89'-0"

Depth: 74'-0" (incl. deck)

Bedrooms: 3

Bathrooms: 4

Main Floor Laundry: Yes

Walk-in Pantry: Yes

Office/Den: Yes

Plan #: 2011595

Exterior Walls:

Foundation:

Special Ceilings:

Fireplace:

Deck(s):

Veranda:

Attached Garage:

Finished Basement Plan:

2x6 x 9 Ft. (Main Floor)

9' ICF (Insulated Concrete Form)
(Other Foundations Available)

Coffered

Yes

Rear (Covered)

Front (Covered)

Yes (4-Car - 18'x8' & 12'x8' Doors)

Yes

Country Style Living with room for everyone and everything. This plan looks great from the front or the back. The covered front veranda with craftsman style posts along with the stonework and wide corners & trims give it great curb appeal. Step into the front foyer and you will quickly see the open kitchen & great room areas. On the left of the foyer you have a spare bedroom across from a 3-piece bath with a 48" shower. Also, the laundry room is located here which has enough room for maybe a sewing or craft area. At the other end of the hall you have an office or a spare room, then you enter the master bedroom. The ceiling is coffered. A large walk-in closet is next to the ensuite. The ensuite features two sinks with a makeup table, a spa tub, a custom 60" shower, and a private toilet room. A long narrow window above the mirror provides natural lighting. Now, onto the "L" shaped kitchen that features a walk-in pantry, space for large appliances, and a working island with a lunch bar. The island is angled to match the coffered ceiling in the great room. This plan has a wood burning fireplace in the great room for those cooler nights. The dining room has plenty of windows to help light up these areas. A french door leads out to the covered rear deck. An open curved stairwell takes you to the developed basement, which includes one more bedroom with a walk-in closet. A 3-piece bath is next to a large unfinished storage area and the mechanical room. There will be plenty of space in the family room for pretty much anything you would like to put there. Dad will love his new 4 or 5 car garage with one bay as a drive through. All overhead doors are 8' high. The floor slopes to sumps. There are two man doors and a 2-piece bathroom for added convenience. There is something for everyone in this home plan.

PROTECTED BY COPYRIGHT LAWS.
PROPERTY OF **E-DESIGNS PLANS INC.**

E-Designs Plans Inc.

A western Canadian company from Alberta that designs and ships home plans all across Canada, the US, and Overseas.

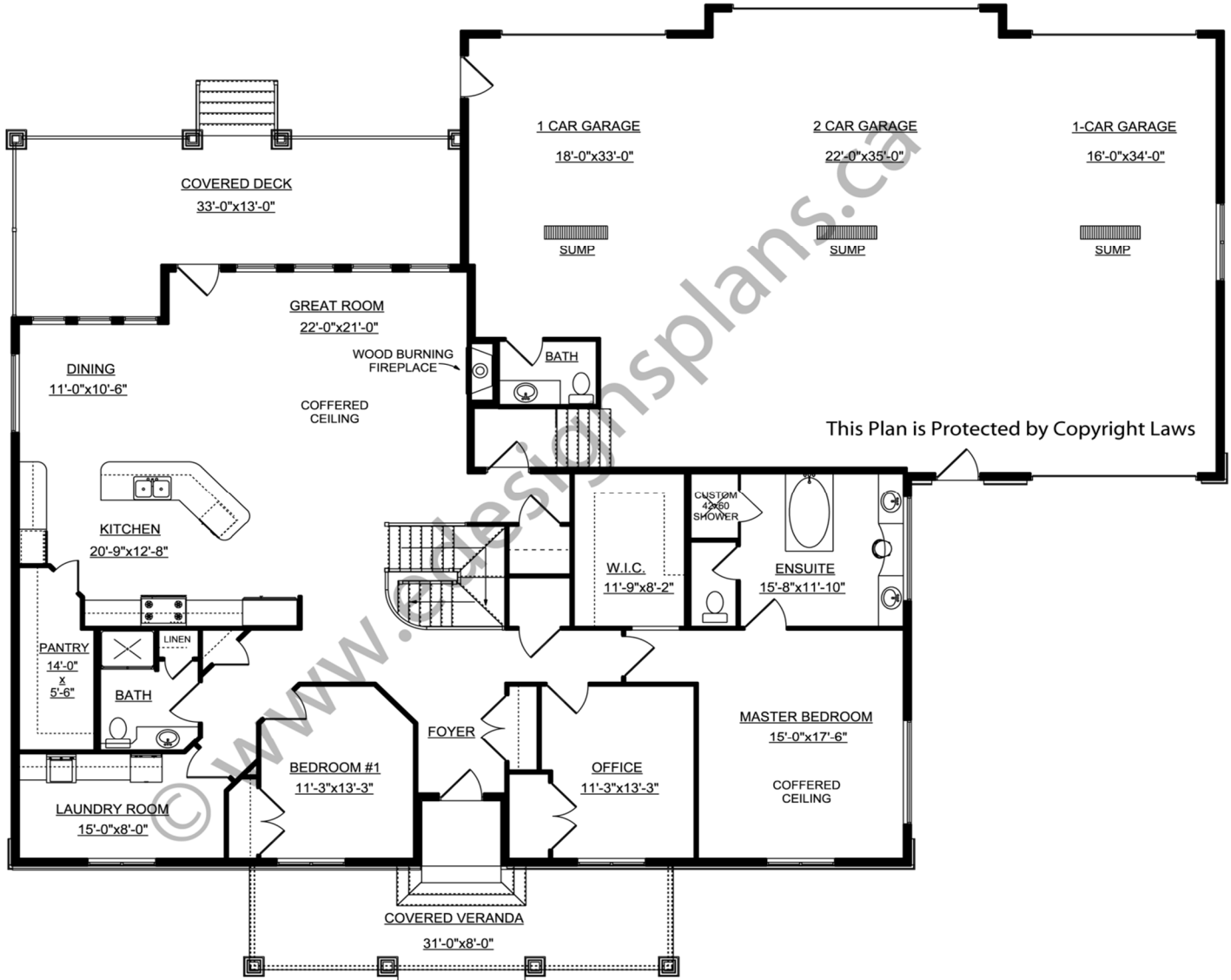
For more information about this plan contact the designer at: info@edesignsplans.ca.

Plan 2011595

www.edesignsplans.ca

Call Us 1-855-675-1800

Main Floor



PROTECTED BY COPYRIGHT LAWS.
PROPERTY OF **E-DESIGNS PLANS INC.**

E-Designs Plans Inc.

A western Canadian company from Alberta that designs and ships home plans all across Canada, the US, and Overseas.

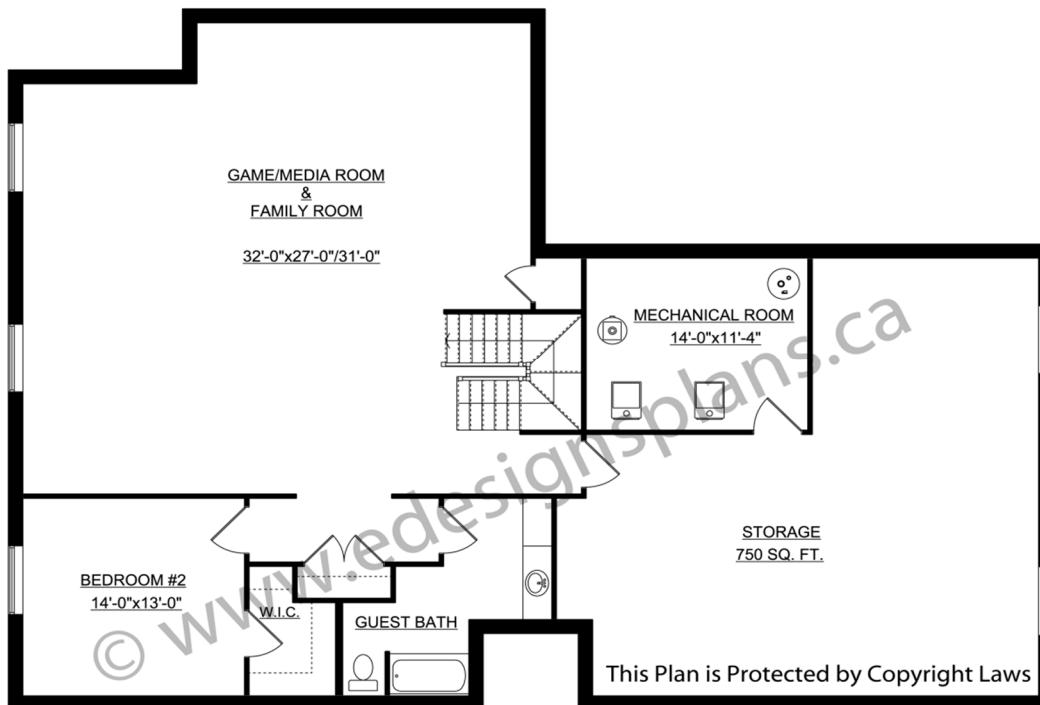
For more information about this plan contact the designer at: info@edesignsplans.ca.

Plan 2011595

www.edesignsplans.ca

[Call Us 1-855-675-1800](tel:1-855-675-1800)

Basement



PROTECTED BY COPYRIGHT LAWS.
PROPERTY OF **E-DESIGNS PLANS INC.**