

E-Designs Plans Inc.

A western Canadian company from Alberta that designs and ships home plans all across Canada, the US, and Overseas.

For more information about this plan contact the designer at: info@edesignsplans.ca.

Plan #: 2011597 Front Elevation

www.edesignsplans.ca

Call Us 1-855-675-1800



Rear Elevation

Country Style Bungalow with Walkout

2485 Sq. Ft. Total Living Area

Width: 64'-0"
 Depth: 72'-0"
 Bedrooms: 3
 Bathrooms: 3
 Main Floor Laundry: Yes
 Walk-in Pantry: Yes
 Office/Den: Yes

Plan #: 2011597

Exterior Walls: 2x6 x 9 Ft. (Main Floor)
 Foundation: 9' ICF (Insulated Concrete Form) (Other Foundations Available)
 Special Ceilings: Trayed
 Fireplace: Yes
 Deck(s): Rear (Covered)
 Veranda: Front (Covered)
 Attached Garage: Yes (2-Car with 10'x8' Doors)
 Finished Basement Plan: No

A Bungalow for the City or Country. A great looking bungalow. The false gables set off the cottage roof, and the wide trims & corners really make this home stand out. From the veranda, enter the dropped front entry and you will see how open this plan is. Step up into the living room and on your right you have the dining room which features a trayed ceiling and a railing to separate it from the dropped front entry. An open stairwell up against the kitchen wall will take you to the basement. The uniquely designed kitchen features a walk-in pantry, plus ample cabinet and counter space. A lunch bar is also available. The breakfast nook is open to everything around it. A double garden door leads you out to the covered rear deck and then to the backyard. The family room has a gas fireplace with book shelves on each side. Next to the den there is a 2-piece bath. Across from the kitchen is the laundry/mudroom which gives access to the 2-car garage. Next are 2 large bedrooms with a 3-piece bath between. The master bedroom also has a double garden door leading out to the rear deck, plus a sitting area at the rear of the room. His & Hers walk-in closets, and a private toilet room is along the way to the 4-piece ensuite. A custom 60" shower, corner spa tub & two sinks make this room perfect. A plant ledge with a window adds natural lighting. The basement is undeveloped except for the mechanical room. A great floor plan.

E-Designs Plans Inc.

A western Canadian company from Alberta that designs and ships home plans all across Canada, the US, and Overseas.

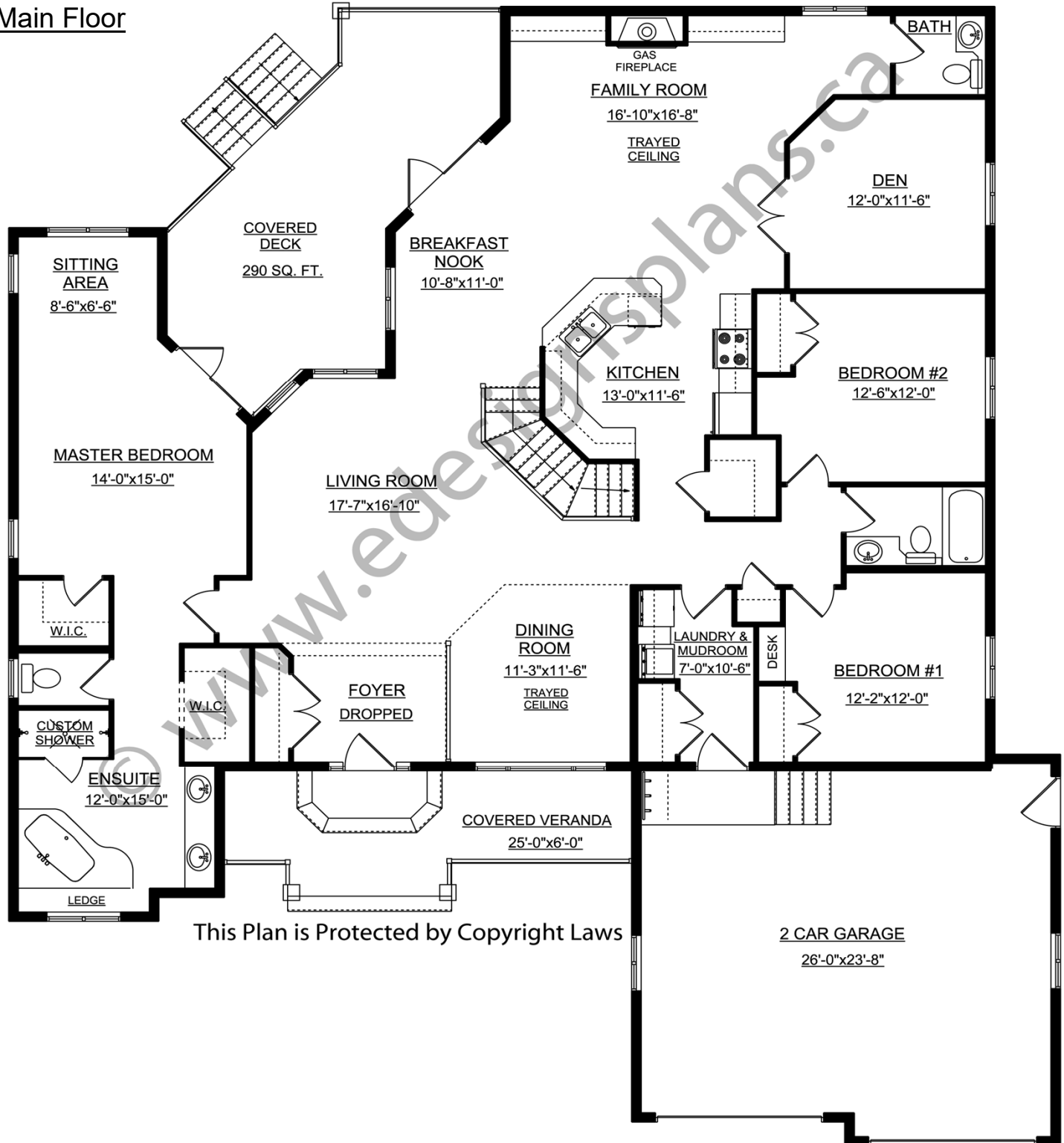
For more information about this plan contact the designer at: info@edesignsplans.ca.

Plan 2011597

www.edesignsplans.ca

Call Us 1-855-675-1800

Main Floor



This Plan is Protected by Copyright Laws

PROTECTED BY COPYRIGHT LAWS.
PROPERTY OF **E-DESIGNS PLANS INC.**