

E-Designs Plans Inc.

A western Canadian company from Alberta that designs and ships home plans all across Canada, the US, and Overseas.

For more information about this plan contact the designer at: info@edesignsplans.ca.

Plan #: 2012605 Front Elevation

www.edesignsplans.ca

[Call Us 1-855-675-1800](tel:1-855-675-1800)



Cabin with Walkout Basement

816 Sq. Ft. Main Floor

Width: 28'-0" (incl deck)
Depth: 46'-0" (incl deck)
Bedrooms: 3
Bathrooms: 2
Main Floor Laundry: No
Walk-in Pantry: No
Office/Den: Yes

Plan #: 2012605

Exterior Walls: 2x6 x 9 Ft. (Main Floor)
Foundation: 8' ICF (Insulated Concrete Form)
(Other Foundations Available)
Special Ceilings: Vaulted over Deck
Fireplace: No
Deck(s): Side & Front (Covered)
Veranda: No
Attached Garage: No
Finished Basement Plan: Yes (Walkout)

A perfect cottage retreat with simplistic design allows for the ease of construction. This cabin has everything you will need to relax in comfort at the lake. There are two bedrooms on the main floor and a three piece bath. The "L" shaped kitchen has room for all four appliances. The living room has large windows for the perfect viewing of the great outdoors. A double garden door leads out to a covered deck with glass inlay railing. The deck continues along the side to the rear. An open staircase in the living room takes you to the developed walkout basement. The large rec room has the same windows as above with a garden door leading to the patio area. There is also another bedroom here with a 3-piece bath. The mechanical room doubles as a laundry and storage area. Make this your home away from home.

PROTECTED BY COPYRIGHT LAWS.
PROPERTY OF **E-DESIGNS PLANS INC.**

E-Designs Plans Inc.

A western Canadian company from Alberta that designs and ships home plans all across Canada, the US, and Overseas.

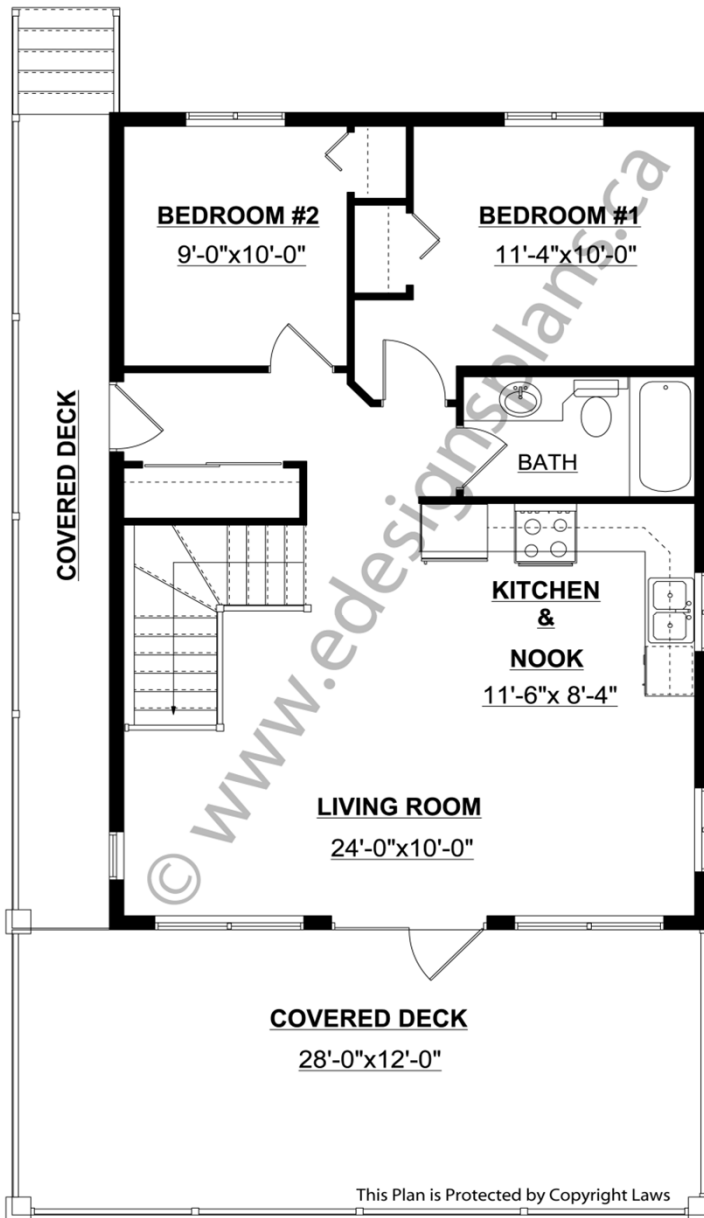
For more information about this plan contact the designer at: info@edesignsplans.ca.

Plan 2012605

www.edesignsplans.ca

[Call Us 1-855-675-1800](tel:1-855-675-1800)

Main Floor



Lower Floor

