

E-Designs Plans Inc.

A western Canadian company from Alberta that designs and ships home plans all across Canada, the US, and Overseas.

For more information about this plan contact the designer at: info@edesignsplans.ca.

Plan #: 2012606 Front Elevation

www.edesignsplans.ca

Call Us 1-855-675-1800



2-Bedroom Bungalow with 2-Car Garage
1358 Sq. Ft. Main Floor

Width: 42'-0"
Depth: 58'-0"
Bedrooms: 2
Bathrooms: 2
Main Floor Laundry: Yes
Walk-in Pantry: Yes
Office/Den: No

Plan #: 2012606

Exterior Walls: 2x6 x 8 Ft. (Main Floor)
Foundation: 8'-6" ICF (Insulated Concrete Form)
(Other Foundations Available)
Special Ceilings: No
Fireplace: Yes
Deck(s): Rear
Veranda: No
Attached Garage: Yes (2-Car with a 16'x8' Door)
Finished Basement Plan: No

1358 Sq. Ft. Bungalow. A great floor plan for just the two of you or perfect for a small family. The dropped front entry keeps the front steps and the steps into the garage to a minimum. From the front entry you see how open the kitchen, dining and living room are. A wood burning stove in the living room will surely keep you toasty warm on those cold winter days. The "L" shaped kitchen features a walk-in pantry. A large mudroom from the kitchen takes you to the deck in the rear. The laundry room also has a laundry sink. There are two closets in the hallway for extra storage. The guest bedroom could become an office, craft room, etc. The large master bedroom features a walk-in closet and a 3-piece ensuite with a 6 foot soaker tub. There is even more room available in the undeveloped basement. Extra bedrooms, rec room, theatre room, etc.

E-Designs Plans Inc.

A western Canadian company from Alberta that designs and ships home plans all across Canada, the US, and Overseas.

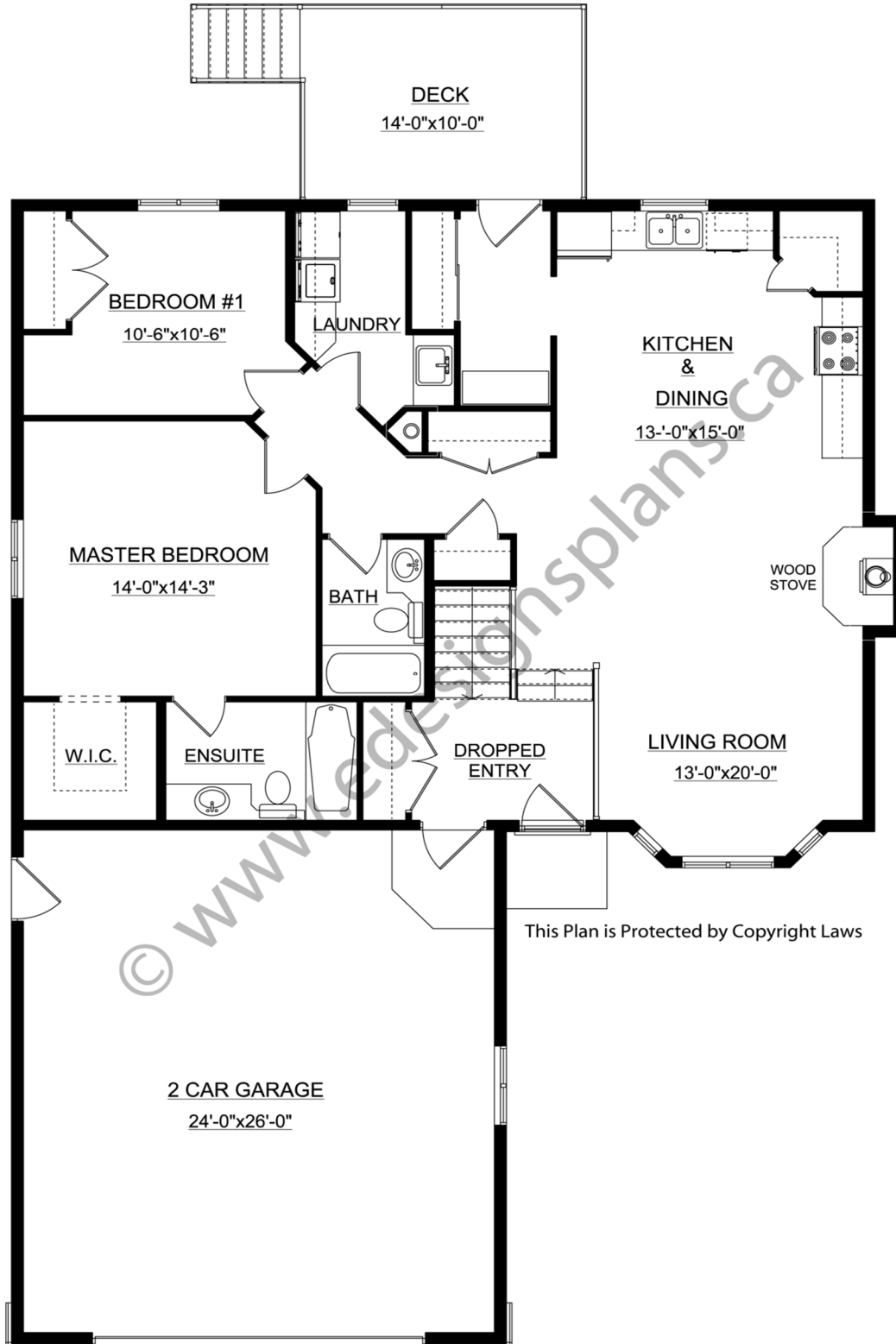
For more information about this plan contact the designer at: info@edesignsplans.ca.

Plan 2012606

www.edesignsplans.ca

[Call Us 1-855-675-1800](tel:1-855-675-1800)

Main Floor



This Plan is Protected by Copyright Laws

PROTECTED BY COPYRIGHT LAWS.
PROPERTY OF **E-DESIGNS PLANS INC.**