

E-Designs Plans Inc.

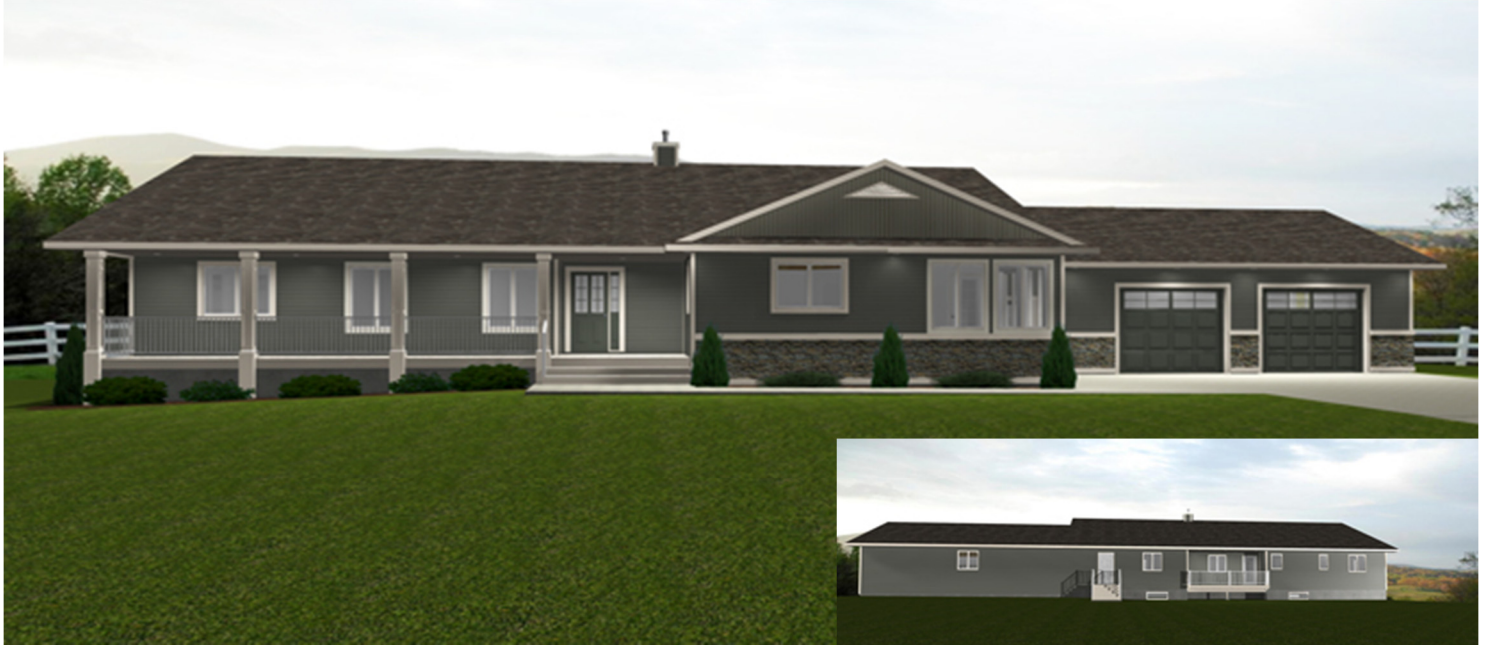
A western Canadian company from Alberta that designs and ships home plans all across Canada, the US, and Overseas.

For more information about this plan contact the designer at: info@edesignsplans.ca.

Plan #: 2012627 Front Elevation

www.edesignsplans.ca

Call Us 1-855-675-1800



Rear Elevation



Ranch Style with 2-Car Garage

2675 Sq. Ft. Main Floor

Width: 108'-0"
Depth: 46'-0"
Bedrooms: 7
Bathrooms: 3 & a Half Bath
Main Floor Laundry: Yes
Walk-in Pantry: Yes
Sunroom: Yes
Finished Basement Plan: Yes

Plan #: 2012627

Exterior Walls: 2x6 x 9 Ft. (Main Floor)
Foundation: 9' ICF (Insulated Concrete Form)
(Other Foundations Available)
Special Ceilings: None
Fireplaces: Yes (2 Gas)
Deck(s): Rear (Covered)
Veranda: Yes
Attached Garage: Yes (2-Car with 10'x8' Doors)

Ranch Style with 2-Car Garage. A fantastic country style home for your farm or acreage with a huge mud room/laundry room when entering from the garage. It also has a built-in cold room for garden enthusiasts which you won't find in many other plans. The craftsman style posts and old fashioned covered veranda give this house a great ranch-style look. This 7-bedroom home has lots of room for the entire family. It has four nice-sized bedrooms on the main floor, including the master bedroom, and 3 more bedrooms in the basement. A covered deck at the back is accessible from the master bedroom as well as one of the other bedrooms. The master bedroom has a 4-piece ensuite and a huge walk-in closet. Enjoy the warmth generated by one of the two gas fireplaces, one in the dining room and one in the great room. The huge U-shaped kitchen has a full sized pantry and lots of counter and cabinet space. The 2-car garage has two 10'x8' overhead doors and room along the side for a workshop area. Access is from the garage for the basement/cold storage area for added convenience. This plan shows the basement fully developed with an abundance of recreation room space and a games/media room complete with a wet bar. An additional flex room could be used for crafts, sewing, or exercise equipment.

PROTECTED BY COPYRIGHT LAWS.
PROPERTY OF **E-DESIGNS PLANS INC.**

E-Designs Plans Inc.

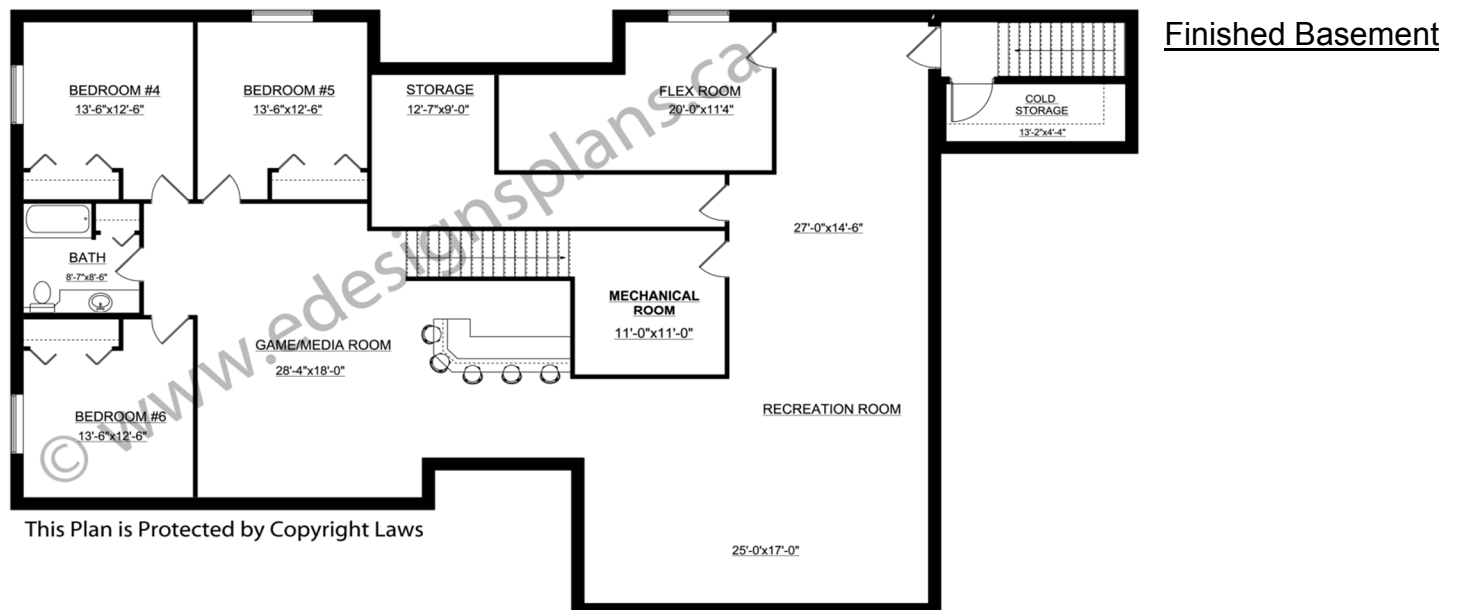
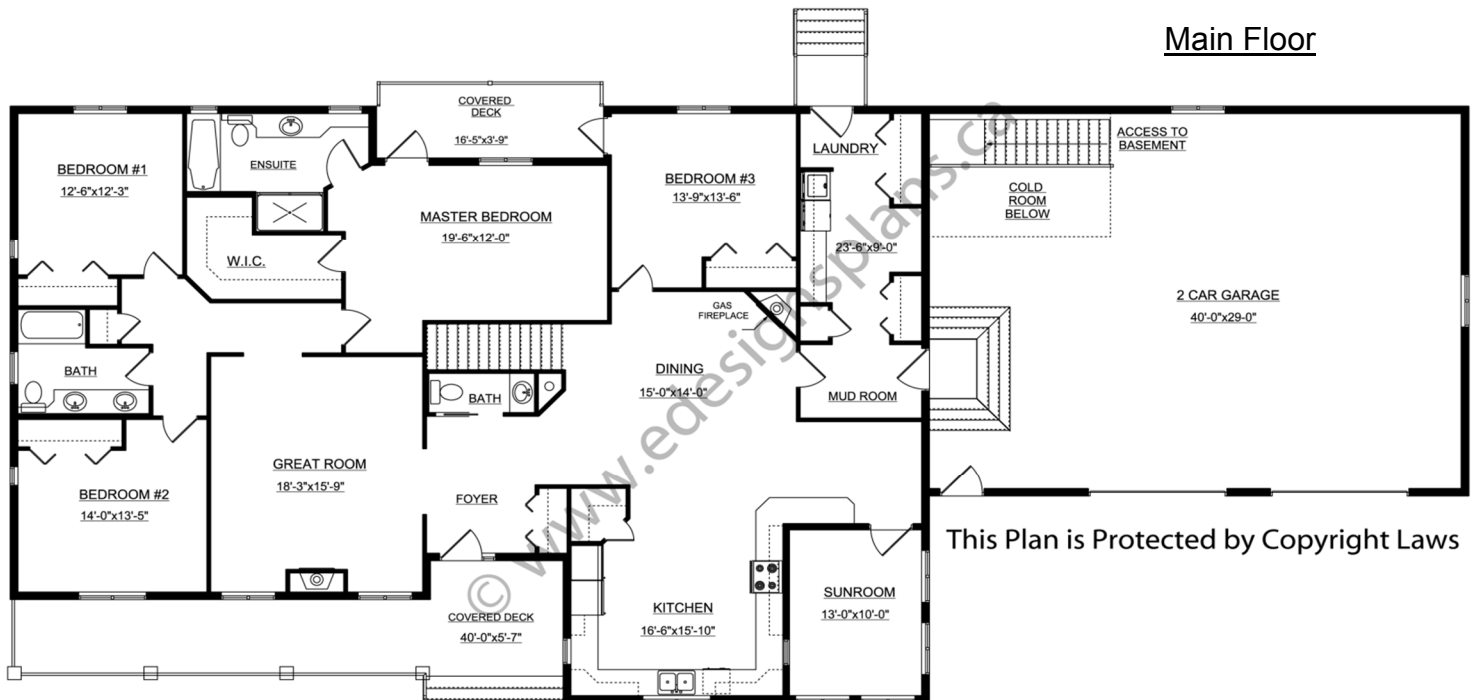
A western Canadian company from Alberta that designs and ships home plans all across Canada, the US, and Overseas.

For more information about this plan contact the designer at: info@edesignsplans.ca.

Plan 2012627

www.edesignsplans.ca

Call Us 1-855-675-1800



PROTECTED BY COPYRIGHT LAWS.
PROPERTY OF **E-DESIGNS PLANS INC.**