

E-Designs Plans Inc.

A western Canadian company from Alberta that designs and ships home plans all across Canada, the US, and Overseas.

For more information about this plan contact the designer at: info@edesignsplans.ca.

Plan #: 2012630 Front Elevation

www.edesignsplans.ca

Call Us 1-855-675-1800



Bungalow with 1-Car Garage

1200 Sq. Ft. Main Floor

Width: 58'-0"
Depth: 30'-0" (plus deck)
Bedrooms: 2
Bathrooms: 2 & a Half Bath
Main Floor Laundry: Yes
Walk-in Pantry: Yes
Office/Den: No

Plan #: 2012630

Exterior Walls: 2x6 x 8 Ft. (Main Floor)
Foundation: 8'-4" Concrete
(Other Foundations Available)
Special Ceilings: None
Fireplace: Yes
Deck(s): Front (Covered)
Veranda: No
Attached Garage: Yes (1-Car with 10'x8' Door)
Finished Basement Plan: No

Bungalow with Single Car Garage. This 1200 Sq. Ft. Bungalow has a partially covered deck on the front with stylish craftsman posts. A cozy 2-bedroom with main floor laundry. The master bedroom has a 3-piece ensuite and wall to wall closets. An open kitchen, dinette, and great room make this area look spacious. The L-shaped kitchen has a corner pantry and island with eating bar. Enjoy the corner gas fireplace in the great room on those cooler nights. The garage has a 10'x8' overhead door and a 2-piece bathroom for added convenience. The basement is undeveloped so lots of option for expansion or added features there.

E-Designs Plans Inc.

A western Canadian company from Alberta that designs and ships home plans all across Canada, the US, and Overseas.

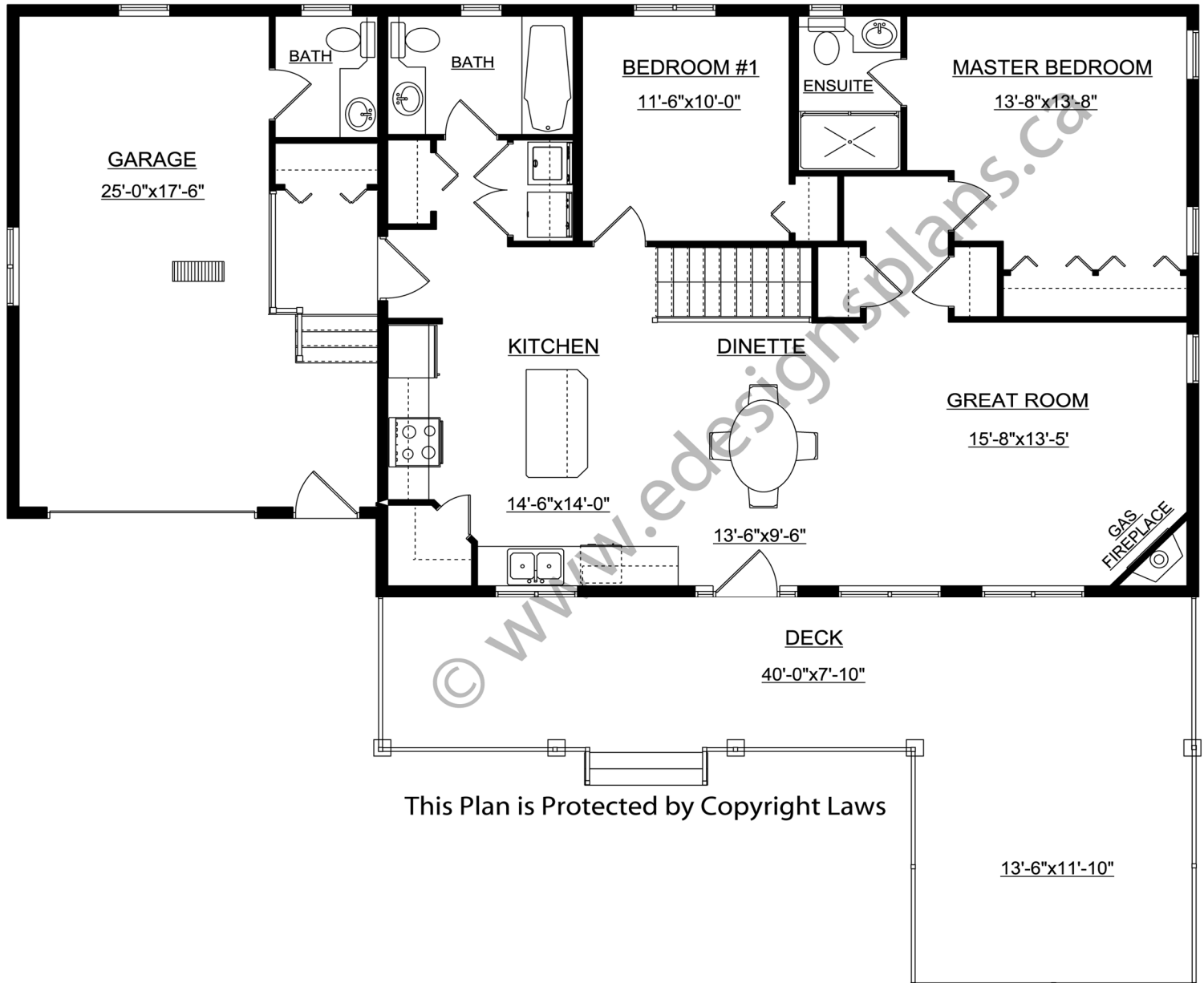
For more information about this plan contact the designer at: info@edesignsplans.ca.

Plan 2012630

www.edesignsplans.ca

[Call Us 1-855-675-1800](tel:1-855-675-1800)

Main Floor



This Plan is Protected by Copyright Laws

PROTECTED BY COPYRIGHT LAWS.
PROPERTY OF **E-DESIGNS PLANS INC.**