

E-Designs *Plans Inc.*

A western Canadian company from Alberta that designs and ships home plans all across Canada, the US, and Overseas.

For more information about this plan contact the designer at: info@edesignsplans.ca.

Plan #: 2013687 Front Elevation

www.edesignsplans.ca

Call Us 1-855-675-1800



Rear Elevation

Bungalow with Walkout & 2-Car Garage

2364 Sq. Ft. Main Floor

Width: 113'-8"
Depth: 56'-11"
Bedrooms: 5
Bathrooms: 4
Main Floor Laundry: Yes
Walk-in Pantry: Yes
Office/Den: Yes

Plan #: 2013687

Exterior Walls: 2x6 x 9 Ft. (Main Floor)
Foundation: 9' Concrete Wall
(Other Foundations Available)
Special Ceilings: Vaulted Great Rm & Dining Rm
Fireplace: Yes
Deck(s): Rear
Veranda: Yes
Attached Garage: Yes (2-Car with 10'x8' Doors)
Finished Basement Plan: Yes

Bungalow with Walkout & 2-Car Angled Garage. This plan is great for the farm or acreage with its country-style look, from the covered veranda to the brick trim and craftsman style posts. From the large front foyer you enter into the great room which has a vaulted ceiling. A fireplace can be enjoyed in the great room on those cooler nights. The dining room is also vaulted and double garden doors open to the large rear deck. The kitchen has an island with an eating bar and a large walk in pantry right across from it. This design has an office right off the kitchen area on the main floor. There are also three bedrooms on this floor. The master bedroom has a 5-piece ensuite and a large walk-in closet. Main floor laundry is a great option in this plan. Head to the basement where you will find two additional bedrooms, both with walk-in closets, another storage room, and a huge game/media room complete with full wet bar. Exit the wet bar area to the walkout patio. The garage is oversize and has a 127 sq. ft. storage room built into it. You will like the two 10'x8' overhead doors, plenty of room for a workbench area, and the full bathroom in the garage for added convenience.

E-Designs Plans Inc.

A western Canadian company from Alberta that designs and ships home plans all across Canada, the US, and Overseas.

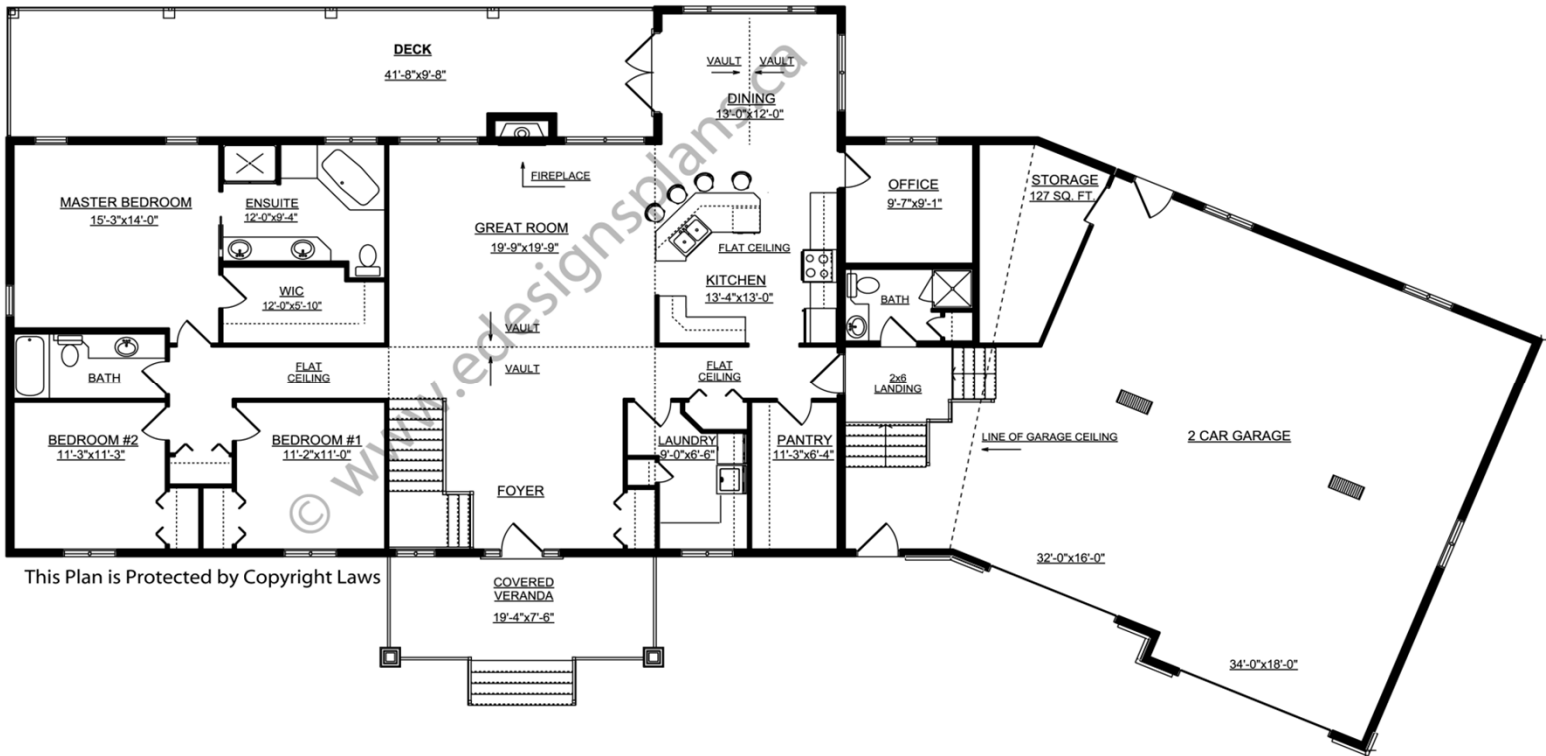
For more information about this plan contact the designer at: info@edesignsplans.ca.

Plan 2013687

www.edesignsplans.ca

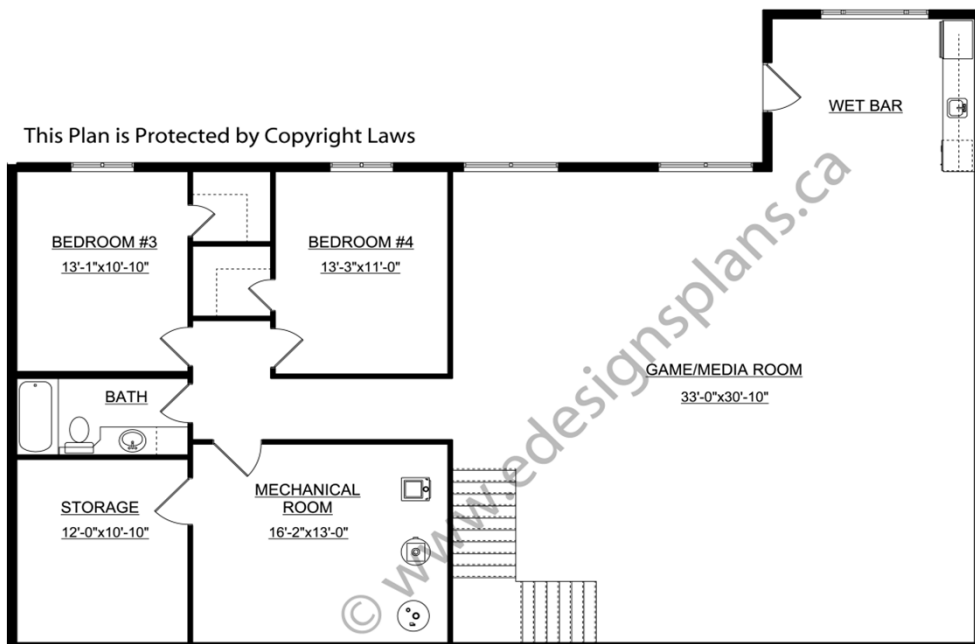
Call Us 1-855-675-1800

Main Floor



This Plan is Protected by Copyright Laws

Basement



This Plan is Protected by Copyright Laws

PROTECTED BY COPYRIGHT LAWS.
PROPERTY OF **E-DESIGNS PLANS INC.**