

E-Designs Plans Inc.

A western Canadian company from Alberta that designs and ships home plans all across Canada, the US, and Overseas.

For more information about this plan contact the designer at: info@edesignsplans.ca.

Plan #: 2013698 Front Elevation

www.edesignsplans.ca

Call Us 1-855-675-1800



Left Elevation



Rear Elevation



Bungalow No Garage
1040 Sq. Ft. Main Floor

Width: 36'-0"
Depth: 52'-0"
Bedrooms: 4
Bathrooms: 2
Main Floor Laundry: No
Walk-in Pantry: No
Finished Basement Plan: Yes

Plan #: 2013698

Exterior Walls: 2x6 x 8 Ft. (Main Floor)
Foundation: 9'-4" ICF (Insulated Concrete Form) (Other Foundations Available)
Special Ceilings: Vaulted Kitchen/Dining/Great Rm
Fireplace: No
Deck(s): Front & Side
Veranda: No
Attached Garage: No

Bungalow No Garage. From the front door you enter into the great room, kitchen, and dinette, which has a vaulted ceiling over all three rooms. This open space concept makes this bungalow look very roomy. There is also access on the side. The L-shaped corner kitchen has an island with an eating bar. There are two bedrooms on this floor as well as a 3-piece bath. The deck on the front wraps around the side and can also be accessed by a door in the hallway across from the bathroom. The downstairs is finished with a huge recreation room, two more bedrooms, and another 3-piece bathroom. Laundry is located on this floor in the mechanical room. A great plan for a narrow lot in town or for a lot at the lake.

E-Designs Plans Inc.

A western Canadian company from Alberta that designs and ships home plans all across Canada, the US, and Overseas.

For more information about this plan contact the designer at: info@edesignsplans.ca.

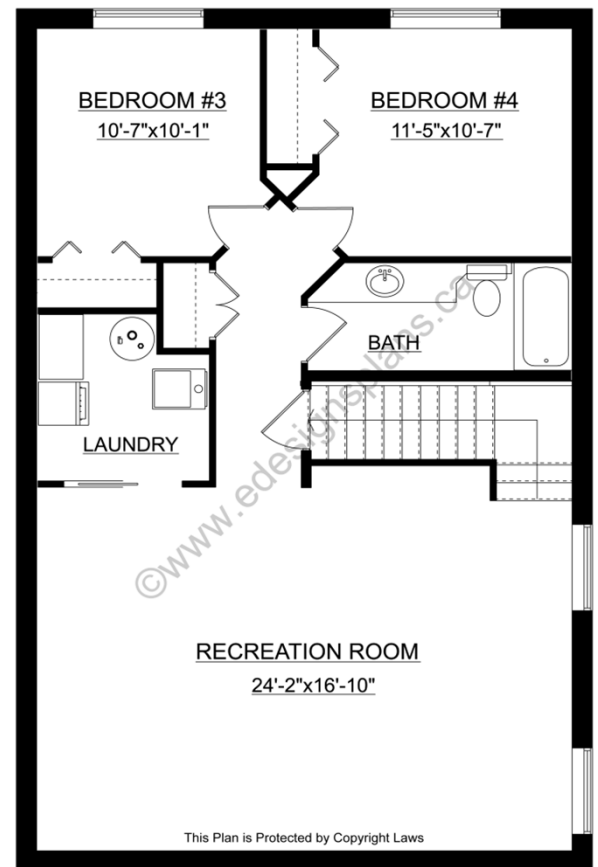
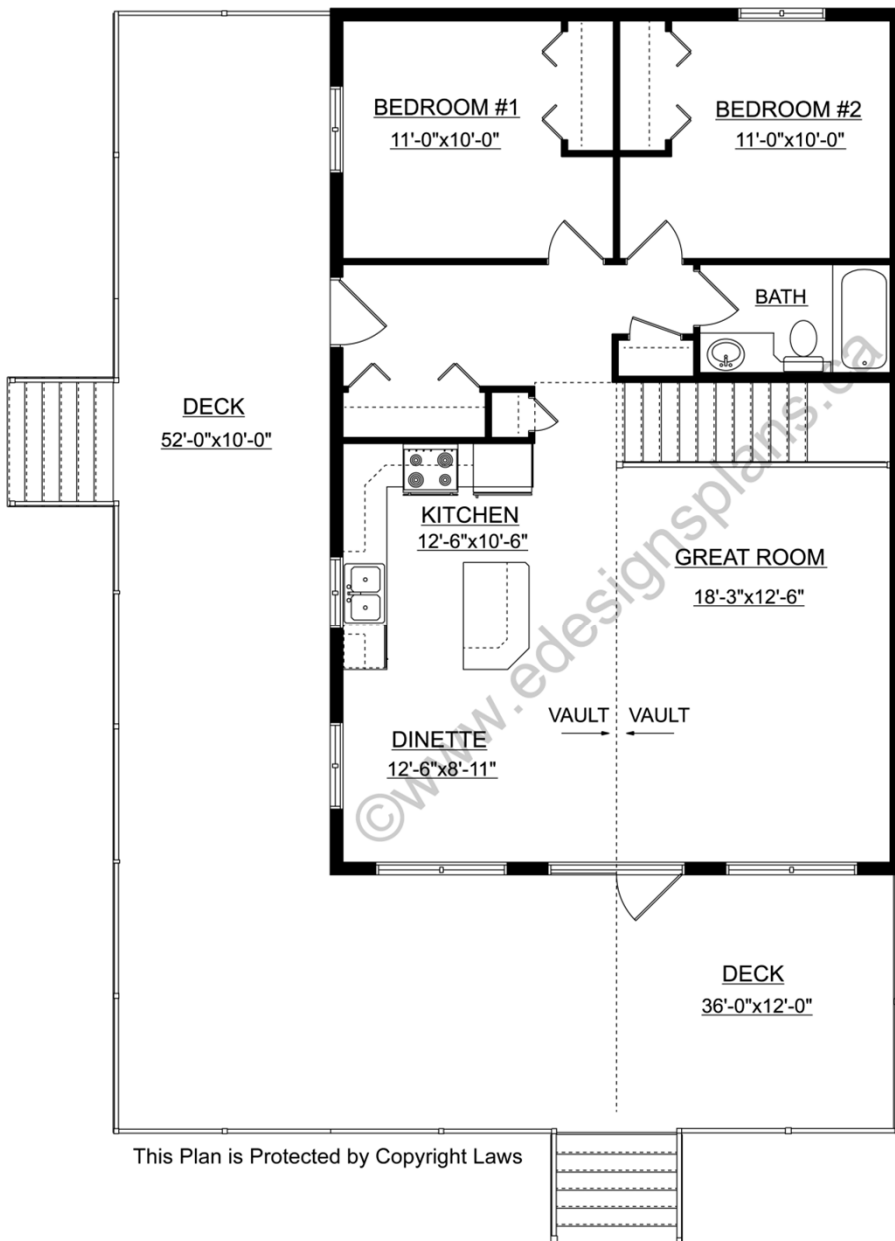
Plan 2013698

www.edesignsplans.ca

[Call Us 1-855-675-1800](tel:1-855-675-1800)

Main Floor

Finished Basement



This Plan is Protected by Copyright Laws

This Plan is Protected by Copyright Laws

PROTECTED BY COPYRIGHT LAWS.
PROPERTY OF **E-DESIGNS PLANS INC.**