

# *E-Designs* *Plans Inc.*

A western Canadian company from Alberta that designs and ships home plans all across Canada, the US, and Overseas.

For more information about this plan contact the designer at: [info@edesignsplans.ca](mailto:info@edesignsplans.ca).

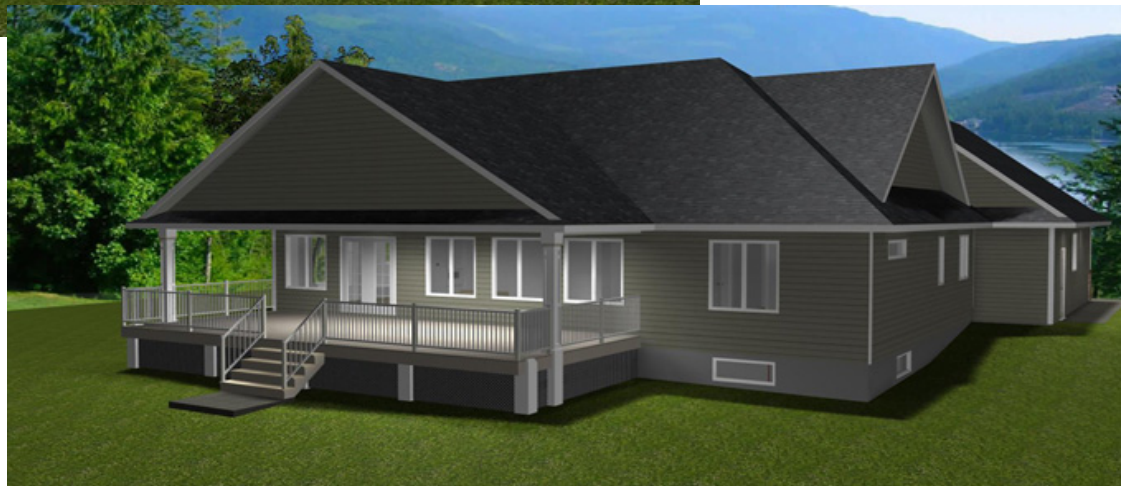
**Plan #: 2013699 Front Elevation**

[www.edesignsplans.ca](http://www.edesignsplans.ca)

[Call Us 1-855-675-1800](tel:1-855-675-1800)



**Rear Elevation**



**Bungalow with 2-Car Garage**

1702 Sq. Ft. Main Floor

Width: 59'-6"  
 Depth: 79'-0"  
 Bedrooms: 4  
 Bathrooms: 2 & a Half Bath  
 Main Floor Laundry: Yes  
 Walk-in Pantry: Yes  
 Office/Den: Yes

**Plan #: 2013699**

Exterior Walls: 2x6 x 8 Ft. (Main Floor)  
 Foundation: 9' ICF (Insulated Concrete Form) (Other Foundations Available)  
 Special Ceilings: Coffered Master & Great Room  
 Fireplace: No  
 Deck(s): Rear (Covered)  
 Veranda: Yes (Covered)  
 Attached Garage: Yes (2-Car with 10'x8' Doors)  
 Finished Basement Plan: Yes

**Bungalow with 2-Car Garage.** Enter this house through a covered veranda with decorative posts. From the front foyer the hallway takes you directly into the great room, which has a coffered ceiling. The great room is open to the dining room as well. The U-shaped kitchen has an island in the centre and a built-in china cabinet as part of the cupboards. A huge walk-through pantry which is also accessible from the foyer is just off the kitchen. A stackable washer/dryer is part of the half bath as you enter the house, opposite of the entry to the office/den. Exit the double garden doors to the covered deck in the rear. The master bedroom is in behind the garage with a full walk-in closet and 4-piece ensuite. The garage has 10'x8' overhead doors and has plenty of room for a workbench. The basement is also accessible from the garage.

PROTECTED BY COPYRIGHT LAWS.  
 PROPERTY OF ***E-DESIGNS PLANS INC.***

# E-Designs Plans Inc.

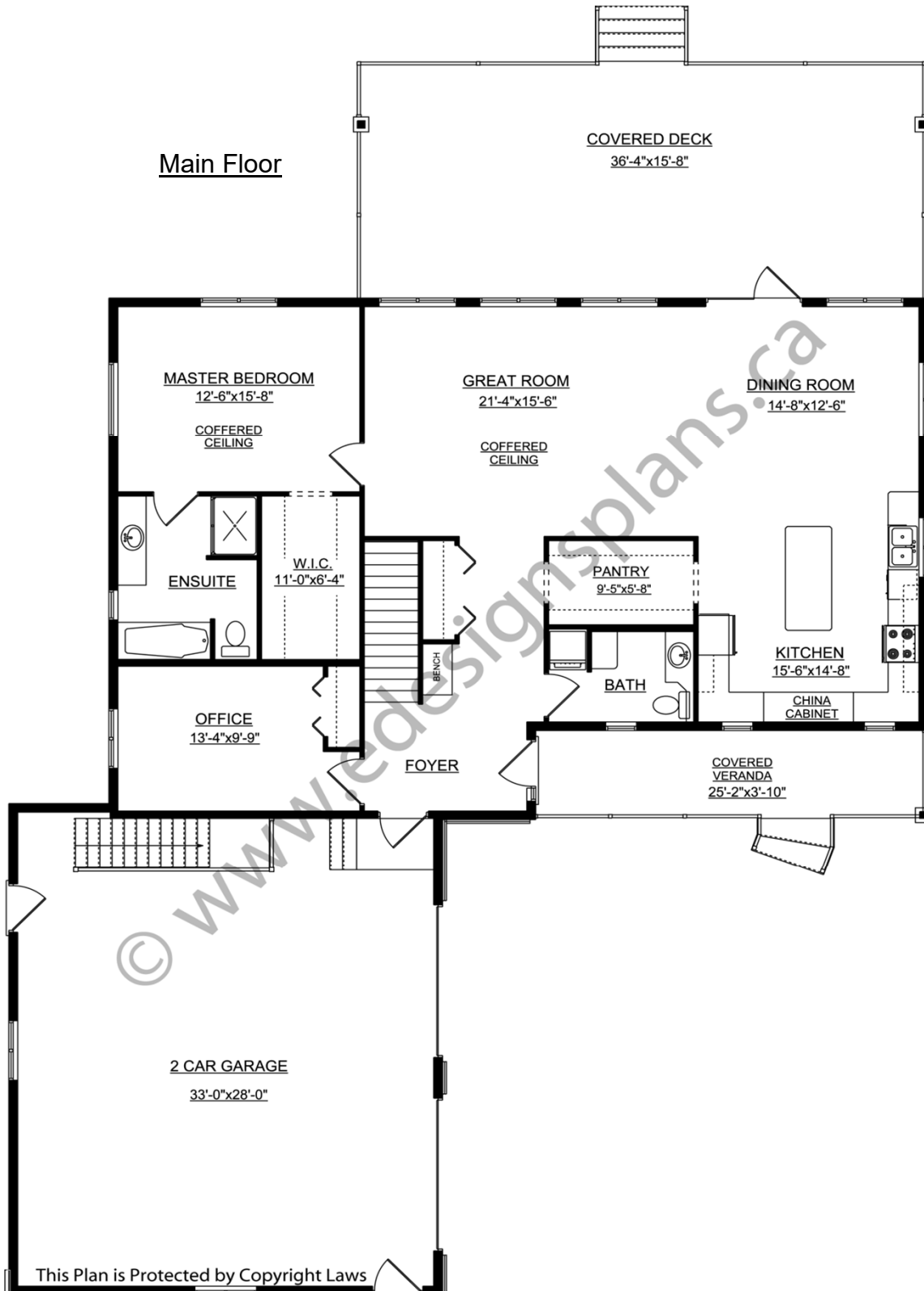
A western Canadian company from Alberta that designs and ships home plans all across Canada, the US, and Overseas.

For more information about this plan contact the designer at: [info@edesignsplans.ca](mailto:info@edesignsplans.ca).

Plan 2013699

[www.edesignsplans.ca](http://www.edesignsplans.ca)

[Call Us 1-855-675-1800](tel:1-855-675-1800)



PROTECTED BY COPYRIGHT LAWS.  
PROPERTY OF **E-DESIGNS PLANS INC.**

# *E-Designs Plans Inc.*

A western Canadian company from Alberta that designs and ships home plans all across Canada, the US, and Overseas.

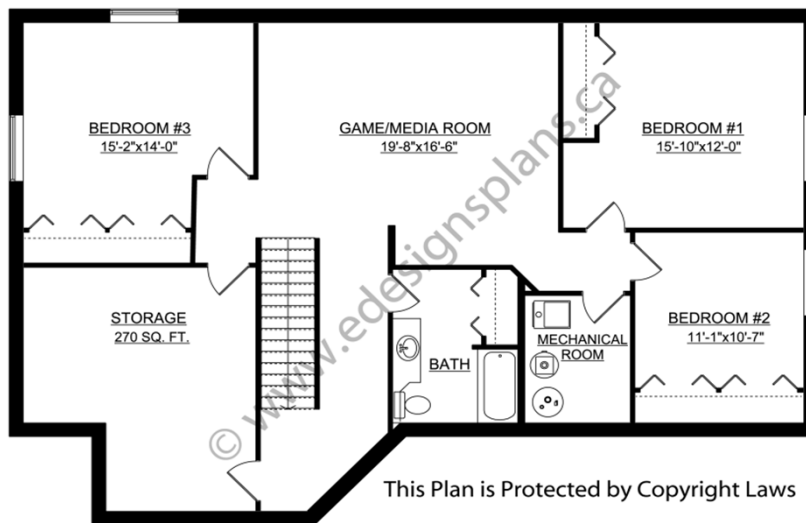
For more information about this plan contact the designer at: [info@edesignsplans.ca](mailto:info@edesignsplans.ca).

Plan 2013699

[www.edesignsplans.ca](http://www.edesignsplans.ca)

[Call Us 1-855-675-1800](tel:1-855-675-1800)

## Finished Basement



This Plan is Protected by Copyright Laws