

E-Designs Plans Inc.

A western Canadian company from Alberta that designs and ships home plans all across Canada, the US, and Overseas.

For more information about this plan contact the designer at: info@edesignsplans.ca.

Plan #: 2013703 Front Elevation

www.edesignsplans.ca

Call Us 1-855-675-1800



Rear Elevation



Bungalow with 2-Car Angled Garage

1780 Sq. Ft. Main Floor

Width: 103'-6"
Depth: 32'-0" (plus deck)
Bedrooms: 2
Bathrooms: 2 & a Half Bath
Main Floor Laundry: Yes
Walk-in Pantry: Yes
Office/Den: Yes

Plan #: 2013703

Exterior Walls: 2x6 x 8 Ft. (Main Floor)
Foundation: 8'-6" Concrete Wall
(Other Foundations Available)
Special Ceilings: Vaulted Dining Rm & Great Rm
Fireplace: Yes
Deck(s): Rear
Veranda: Yes
Attached Garage: Yes (2-Car with 10'x8' Doors)
Finished Basement Plan: No

Bungalow with 2-Car Angled Garage. This is a terrific plan for the farm or acreage with its covered veranda on the front and decorative posts giving it that country-style look. The front door enters into the dinette and great room area, which is vaulted from front to back. A wood burning stove in the corner of the great room can be enjoyed on those colder nights. Exit from the great room onto the rear deck. The U-shaped kitchen has a corner walk-in pantry and is outlined by a huge island with lunch bar. Main floor laundry with another sink is across from the kitchen. The hallway to the right of the great room leads to a corner office plus two bedrooms. The master bedroom has a walk-in closet and 4-piece ensuite. An additional 3-piece bath is accessible from the hallway. Down the stairs from the front entrance leads to the basement, where the mechanical room is located. If you need more room, we can design your basement for you. You will love the 2-car angled garage with 10'x8' overhead doors and a corner workshop area. The garage also has a half bath in the corner for added convenience.

PROTECTED BY COPYRIGHT LAWS.
PROPERTY OF **E-DESIGNS PLANS INC.**

E-Designs Plans Inc.

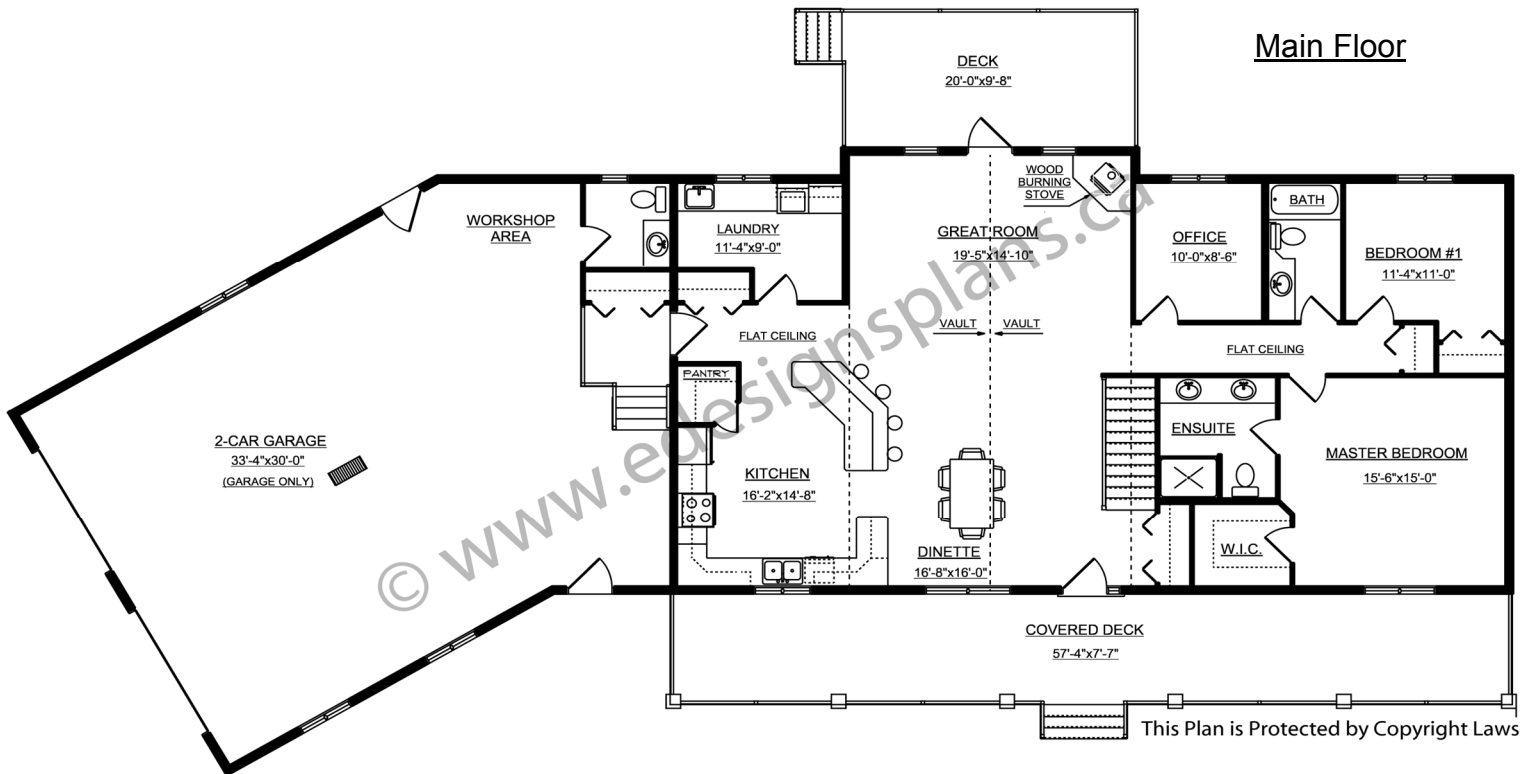
A western Canadian company from Alberta that designs and ships home plans all across Canada, the US, and Overseas.

For more information about this plan contact the designer at: info@edesignsplans.ca.

Plan 2013703

www.edesignsplans.ca

[Call Us 1-855-675-1800](tel:1-855-675-1800)



PROTECTED BY COPYRIGHT LAWS.
PROPERTY OF **E-DESIGNS PLANS INC.**