

E-Designs Plans Inc.

A western Canadian company from Alberta that designs and ships home plans all across Canada, the US, and Overseas.

For more information about this plan contact the designer at: info@edesignsplans.ca.

Plan #: 2013724 Front Elevation

www.edesignsplans.ca

Call Us 1-855-675-1800



Rear Elevation

Bungalow No Garage
1496 Sq. Ft. Main Floor

Width: 36'-0"
Depth: 48'-0" (plus deck)
Bedrooms: 3
Bathrooms: 2
Main Floor Laundry: Yes
Walk-in Pantry: Yes
Mudroom: Yes

Plan #: 2013724

Exterior Walls: 2x6 x 8 Ft. (Main Floor)
Foundation: 8'-4" Concrete Wall
(Other Foundations Available)
Special Ceilings: None
Fireplace: Yes
Deck(s): Rear (Partially Covered)
Veranda: Yes
Attached Garage: No
Finished Basement Plan: No

Bungalow No Garage. From the front covered veranda, you enter the living room with a corner fireplace. The dinette, off to the right, is candelivered for more space. The U-shaped kitchen is open to the dinette, has a corner pantry, and island with eating bar. Just around the corner is the laundry room with linen closets. Between the laundry room and the back deck is a large mudroom. The rear deck is partially covered. The master bedroom looks out towards the back deck. It has a 3-piece ensuite and walk-in closet. Two additional bedrooms on this floor share another 3-piece bathroom. The basement is not yet developed, so if you need more space, there are lots of options to work with here.

PROTECTED BY COPYRIGHT LAWS.
PROPERTY OF **E-DESIGNS PLANS INC.**

E-Designs Plans Inc.

A western Canadian company from Alberta that designs and ships home plans all across Canada, the US, and Overseas.

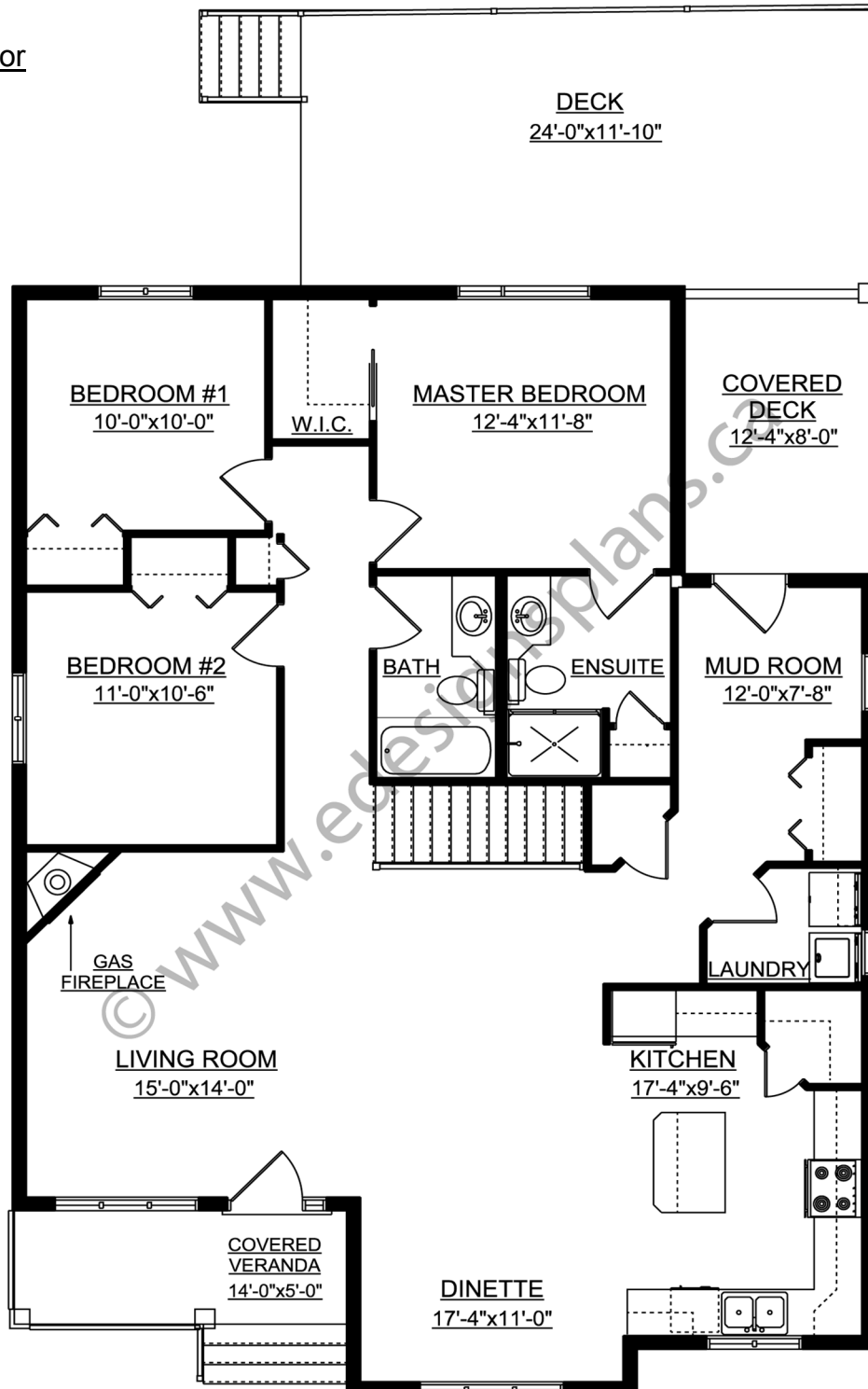
For more information about this plan contact the designer at: info@edesignsplans.ca.

Plan 2013724

www.edesignsplans.ca

[Call Us 1-855-675-1800](tel:1-855-675-1800)

Main Floor



This Plan is Protected by Copyright Laws
PROTECTED BY COPYRIGHT LAWS.
PROPERTY OF **E-DESIGNS PLANS INC.**