

E-Designs Plans Inc.

A western Canadian company from Alberta that designs and ships home plans all across Canada, the US, and Overseas.

For more information about this plan contact the designer at: info@edesignsplans.ca.

Plan #: 2014790 Front Elevation

www.edesignsplans.ca

Call Us 1-855-675-1800



Rear Elevation



Bungalow with 2-Car Garage

1521 Sq. Ft. Main Floor

Width: 45'-0"
 Depth: 64'-0" (plus deck)
 Bedrooms: 4
 Bathrooms: 3
 Laundry: Lower Floor
 Walk-in Pantry: Yes
 Flex Room/Office: Yes

Plan #: 2014790

Exterior Walls: 2x6 x 9 Ft. (Main Floor)
 Foundation: 8' Concrete Wall
 (Other Foundations Available)
 Special Ceilings: None
 Fireplace: No
 Deck(s): Rear (Partially Covered)
 Veranda: Yes
 Attached Garage: Yes (2-Car with 18'x8' Door)
 Finished Basement Plan: Yes

Bungalow with 2-Car Attached Garage. This Bungalow has a gable roof line and a craftsman style post giving it character and curb appeal. The front entry is covered. The access from the garage comes through a mudroom with sink for dropping off clothes and cleaning up before entering the house. The great room is open to the kitchen and dining room. The "U" shaped kitchen has a corner pantry and small working island. The dining area is bayed out and there is a garden door leading to the rear deck, which is partially covered. There are three bedrooms on this floor as well as a 3-piece bathroom. The master bedroom has its own 3-piece ensuite and a large walk-in closet. Downstairs, the basement plan features a game/media area, as well as a recreation room. There is one more bedroom, as well as a flex room, on this level, along with a 3-piece bathroom. A huge laundry room is accommodated on this level as well as a huge storage room. There is also a cold storage room off the game/media area. This would be a great room to store vegetables, canning, or that wine collection.

PROTECTED BY COPYRIGHT LAWS.
 PROPERTY OF **E-DESIGNS PLANS INC.**

E-Designs Plans Inc.

A western Canadian company from Alberta that designs and ships home plans all across Canada, the US, and Overseas.

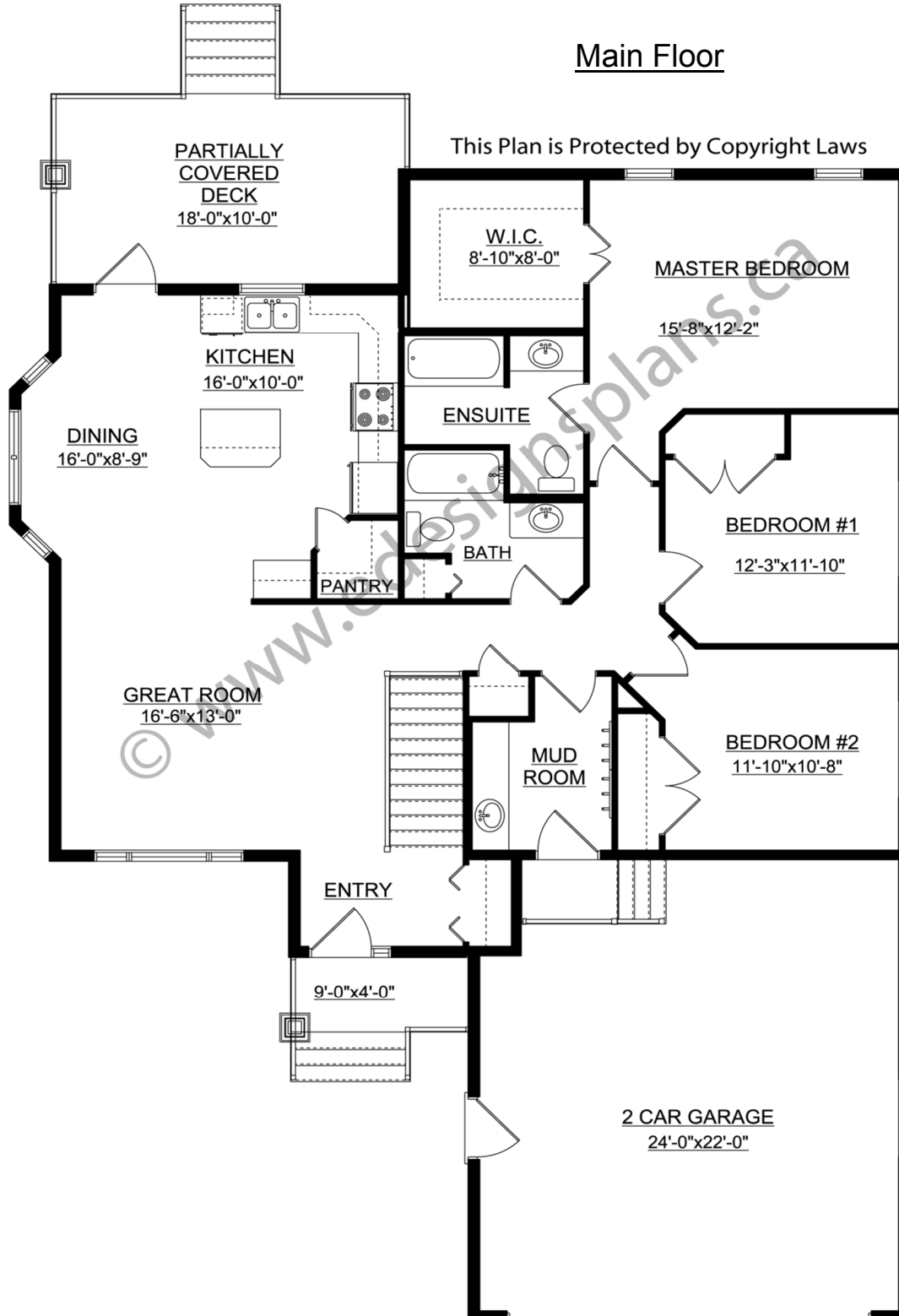
For more information about this plan contact the designer at: info@edesignsplans.ca.

Plan 2014790

www.edesignsplans.ca

Call Us 1-855-675-1800

Main Floor



PROTECTED BY COPYRIGHT LAWS.
PROPERTY OF **E-DESIGNS PLANS INC.**

E-Designs Plans Inc.

A western Canadian company from Alberta that designs and ships home plans all across Canada, the US, and Overseas.

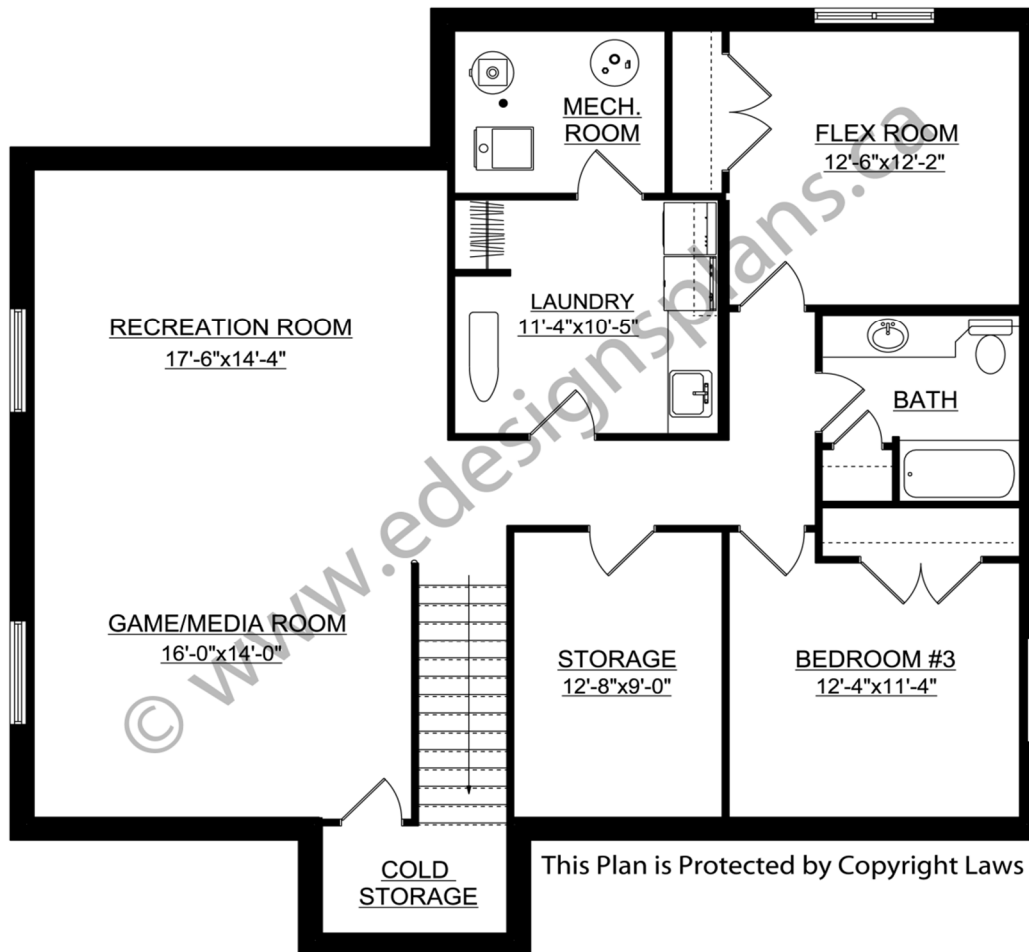
For more information about this plan contact the designer at: info@edesignsplans.ca.

Plan 2014790

www.edesignsplans.ca

[Call Us 1-855-675-1800](tel:1-855-675-1800)

Basement



This Plan is Protected by Copyright Laws

PROTECTED BY COPYRIGHT LAWS.
PROPERTY OF **E-DESIGNS PLANS INC.**