

E-Designs Plans Inc.

A western Canadian company from Alberta that designs and ships home plans all across Canada, the US, and Overseas.

For more information about this plan contact the designer at: info@edesignsplans.ca.

Plan #: 2014791 Front Elevation

www.edesignsplans.ca

Call Us 1-855-675-1800



Rear Elevation

Bungalow with 3-Car Garage

1359 Sq. Ft. Main Floor

Width: 53'-0"
 Depth: 64'-0" (plus deck)
 Bedrooms: 4
 Bathrooms: 3
 Laundry: Lower Floor
 Walk-in Pantry: Yes
 Office/Den: Yes

Plan #: 2014791

Exterior Walls: 2x6 x 9 Ft. (Main Floor)
 Foundation: 8' ICF (Insulated Concrete Form) (Other Foundations Available)
 Special Ceilings: None
 Fireplace: No
 Deck(s): Rear (Partially Covered)
 Veranda: Yes
 Attached Garage: Yes (3-Car - 9'x8' & 18'x8' Doors)
 Finished Basement Plan: Yes

Bungalow with 3-Car Attached Garage. This Bungalow has a gable roof line and a craftsman style post giving it character and curb appeal. The front entry is covered. The access from the garage comes through a mudroom. The great room is open to the kitchen and dining room. The "L" shaped kitchen has a corner pantry and small working island. The dining area has a garden door leading to the rear deck, which is partially covered. There are three bedrooms on this floor as well as a 3-piece bathroom. The master bedroom has its own 4-piece ensuite and walk-in closet. Downstairs, the basement plan features a game/media area, as well as an area for a recreation room. There is one more bedroom, as well as a flex room, on this level, each with their own walk-in closet. Another 3-piece bathroom exists on this level, plus the mechanical room. A laundry room is accommodated as well as a storage room. There is also a cold storage room off the game/media area. This would be a great room to store vegetables, canning, or that wine collection. Dad will love the oversized 3-car garage with large overhead doors and a rear man door.

E-Designs Plans Inc.

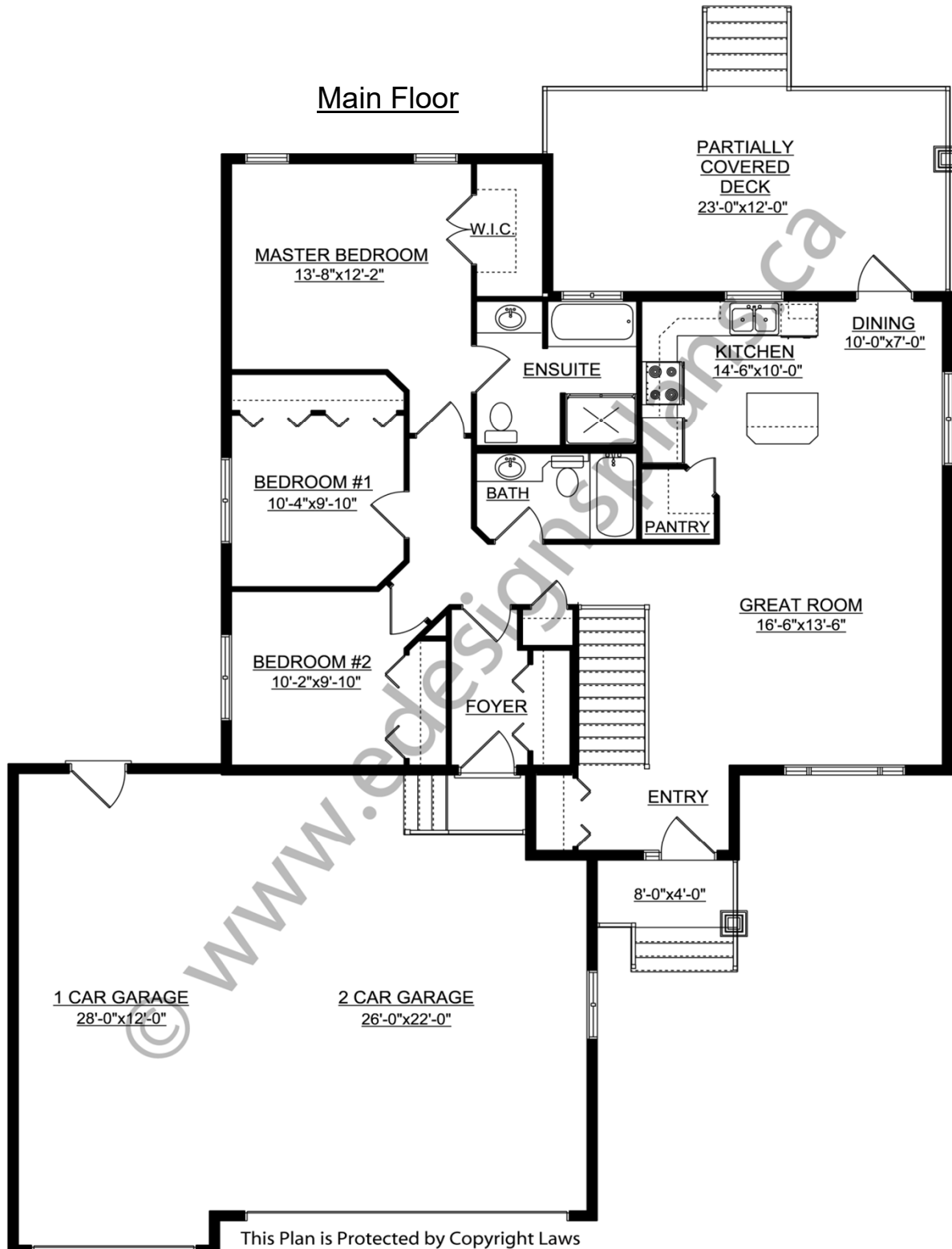
A western Canadian company from Alberta that designs and ships home plans all across Canada, the US, and Overseas.

For more information about this plan contact the designer at: info@edesignsplans.ca.

Plan 2014791

www.edesignsplans.ca

[Call Us 1-855-675-1800](tel:1-855-675-1800)



PROTECTED BY COPYRIGHT LAWS.
PROPERTY OF **E-DESIGNS PLANS INC.**

E-Designs Plans Inc.

A western Canadian company from Alberta that designs and ships home plans all across Canada, the US, and Overseas.

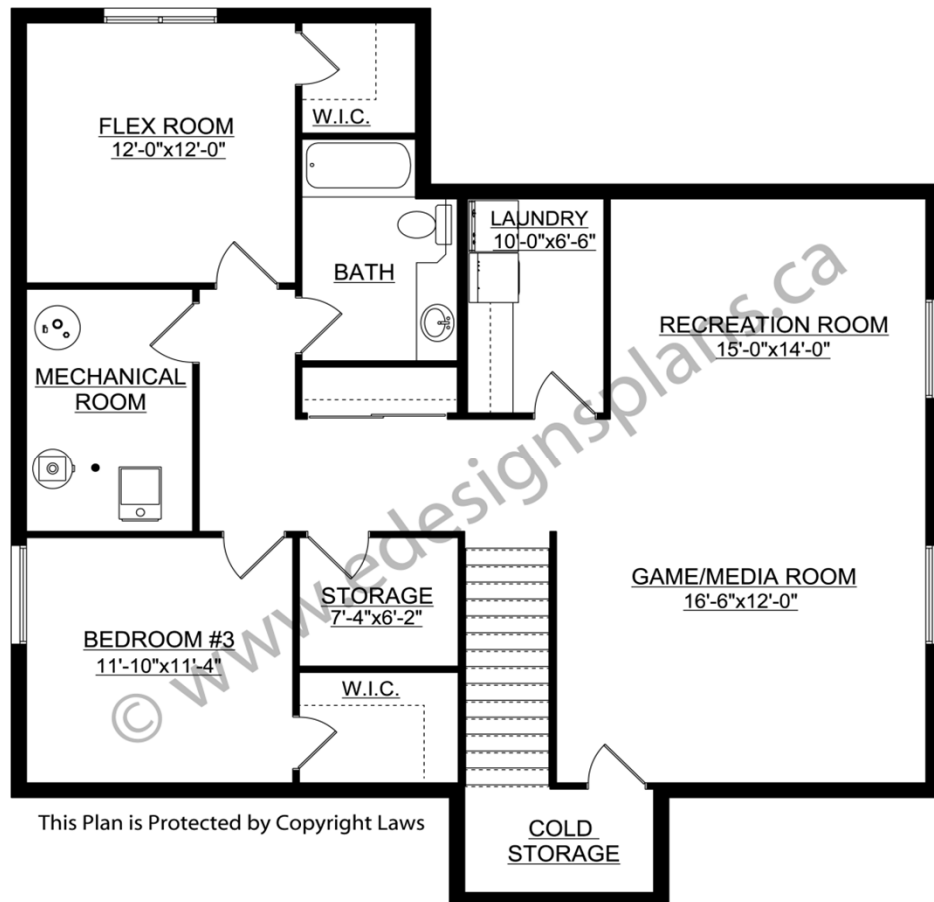
For more information about this plan contact the designer at: info@edesignsplans.ca.

Plan 2014791

www.edesignsplans.ca

[Call Us 1-855-675-1800](tel:1-855-675-1800)

Basement



This Plan is Protected by Copyright Laws