

# *E-Designs*

## *Plans Inc.*

A western Canadian company from Alberta that designs and ships home plans all across Canada, the US, and Overseas.

For more information about this plan contact the designer at: [info@edesignsplans.ca](mailto:info@edesignsplans.ca).

**Plan #: 2014803 Front Elevation**

[www.edesignsplans.ca](http://www.edesignsplans.ca)

**Call Us 1-855-675-1800**



**Right Elevation**



**Bungalow with 2-Car Garage & Lower Suite**

1740 Sq. Ft. Main Floor

Plus 1740 Sq. Ft. Basement Suite

Width: 72'-0" (plus deck)  
 Depth: 46'-0" (plus deck)  
 Bedrooms: 3  
 Bathrooms: 2 & a Half Bath  
 Main Floor Laundry: Yes  
 Walk-in Pantry: No  
 Office/Den: Yes

**Plan #: 2014803**

Exterior Walls: 2x6 x 9 Ft. (Main Floor)  
 Foundation: 9' ICF (Insulated Concrete Form) (Other Foundations Available)  
 Special Ceilings: Vaulted Kitchen/Dining/Great Rm  
 Fireplace: Yes  
 Deck(s): Side (Partially Covered)  
 Veranda: No  
 Attached Garage: Yes (2-Car with 10'x8' Doors)  
 Finished Basement Plan: Yes

**Bungalow with 2-Car Attached Garage & Basement Suite.** This Bungalow Plan has a suite in the basement for that additional revenue or extended family. The stairs leading to the suite are right off the front entry. A huge 1740 square feet is plenty big for a rental unit. It has three bedrooms, an open concept, kitchen, dining, and living room, a large walk-in pantry, lots of closet space/storage, and a 3-piece bath. The largest bedroom has its own walk-in closet and 4-piece ensuite. The mechanical room is shared with the main level. The main floor has three bedrooms. The master has its own walk-in closet and 4-piece ensuite. This floor also has a walk-through laundry room with sink and shelving, and a 3-piece bath. An additional half bath is located just inside the garage so no need to travel through the house when working outside. The front entry leads into the great room first. The kitchen and dining room are open to the great room and all three rooms have a vaulted ceiling over them. The kitchen has a large walk-in pantry and working island. A garden doors lead out from the dining room to the large side deck, which is partially covered. Another great floor plan with a rental unit.

# E-Designs Plans Inc.

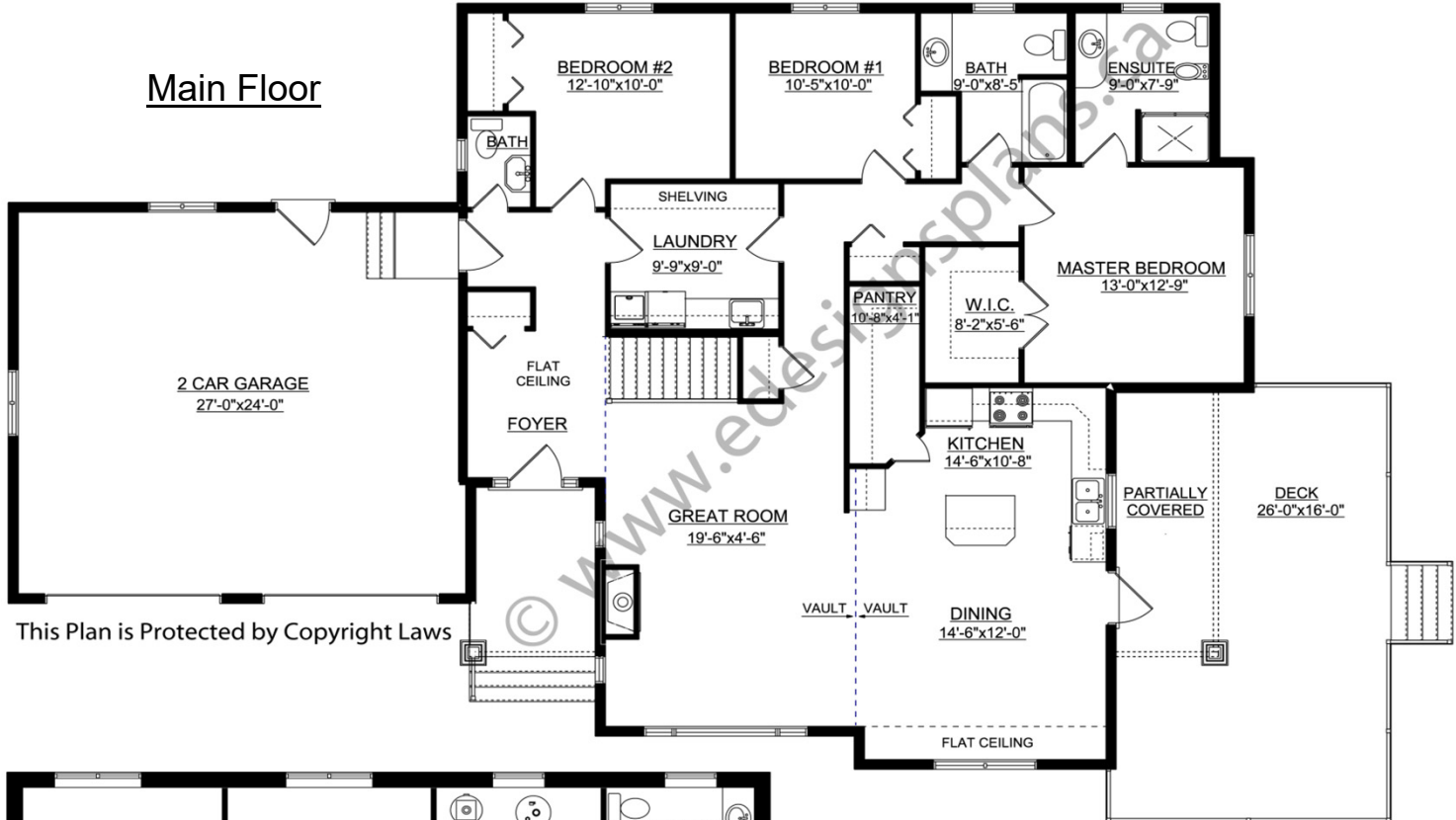
A western Canadian company from Alberta that designs and ships home plans all across Canada, the US, and Overseas.

For more information about this plan contact the designer at: [info@edesignsplans.ca](mailto:info@edesignsplans.ca).

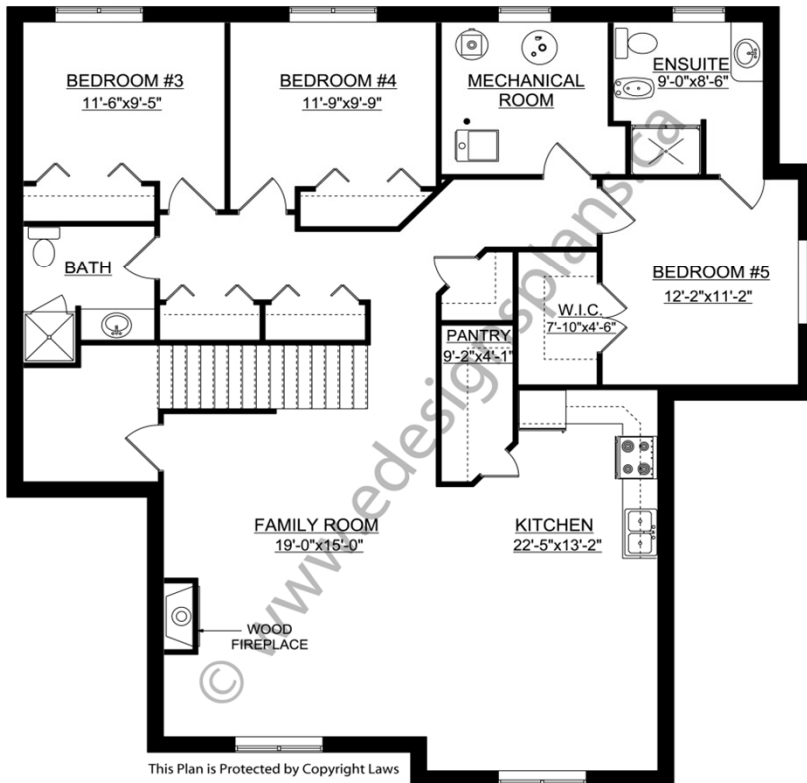
Plan 2014803

[www.edesignsplans.ca](http://www.edesignsplans.ca)

Call Us 1-855-675-1800



This Plan is Protected by Copyright Laws



This Plan is Protected by Copyright Laws

PROTECTED BY COPYRIGHT LAWS.  
PROPERTY OF **E-DESIGNS PLANS INC.**