

E-Designs Plans Inc.

A western Canadian company from Alberta that designs and ships home plans all across Canada, the US, and Overseas.

For more information about this plan contact the designer at: info@edesignsplans.ca.

Plan #: 2014805 Front Elevation

www.edesignsplans.ca

Call Us 1-855-675-1800



Rear Elevation



Bungalow with 3-Car Garage & Walkout
1921 Sq. Ft. Main Floor

Width: 105'-0"
Depth: 76'-6" (incl. deck)
Bedrooms: 4
Bathrooms: 4
Main Floor Laundry: Yes
Walk-in Pantry: Yes
Flex Room/Office: Yes

Plan #: 2014805

Exterior Walls: 2x6 x 9 Ft. (Main Floor)
Foundation: 9' ICF (Insulated Concrete Form) (Other Foundations Available)
Special Ceilings: None
Fireplace: Yes
Deck(s): Rear (Partially Covered)
Veranda: Yes
Attached Garage: Yes (3-Car - 18'x8' & 10'x8' Doors)
Finished Basement Plan: Yes

Bungalow with 3-Car Angled Garage & Walkout. This is a beautiful home with its high gables, triple car angled garage, craftsman style posts, and stone trim. From the front covered veranda, the foyer leads you straight into the great room with corner fireplace. The great room is open to the kitchen and dining room. The dining area is bayed out and has double garden doors leading to a large rear deck, which is partially covered. The kitchen has a large island with a lunch counter, and a walk-through pantry that can be accessed from the kitchen or the garage entrance. The garage is angled with room for 3 vehicles and a work area in between. Between the garage and the house is a mudroom with lots of space. The laundry room is right off the mudroom, beside a 3-piece bath. There is another 3-piece bath near the bedrooms. There are three bedrooms, the master having its own walk-in closet and 4-piece ensuite. Downstairs you will find a large family room with wet bar, a separate theater room, a 3-piece bath, a storage room, an additional bedroom, and an exercise or flex room. The family room has large windows and double doors leading to a covered patio, so lots of natural lighting.

PROTECTED BY COPYRIGHT LAWS.
PROPERTY OF **E-DESIGNS PLANS INC.**

E-Designs Plans Inc.

A western Canadian company from Alberta that designs and ships home plans all across Canada, the US, and Overseas.

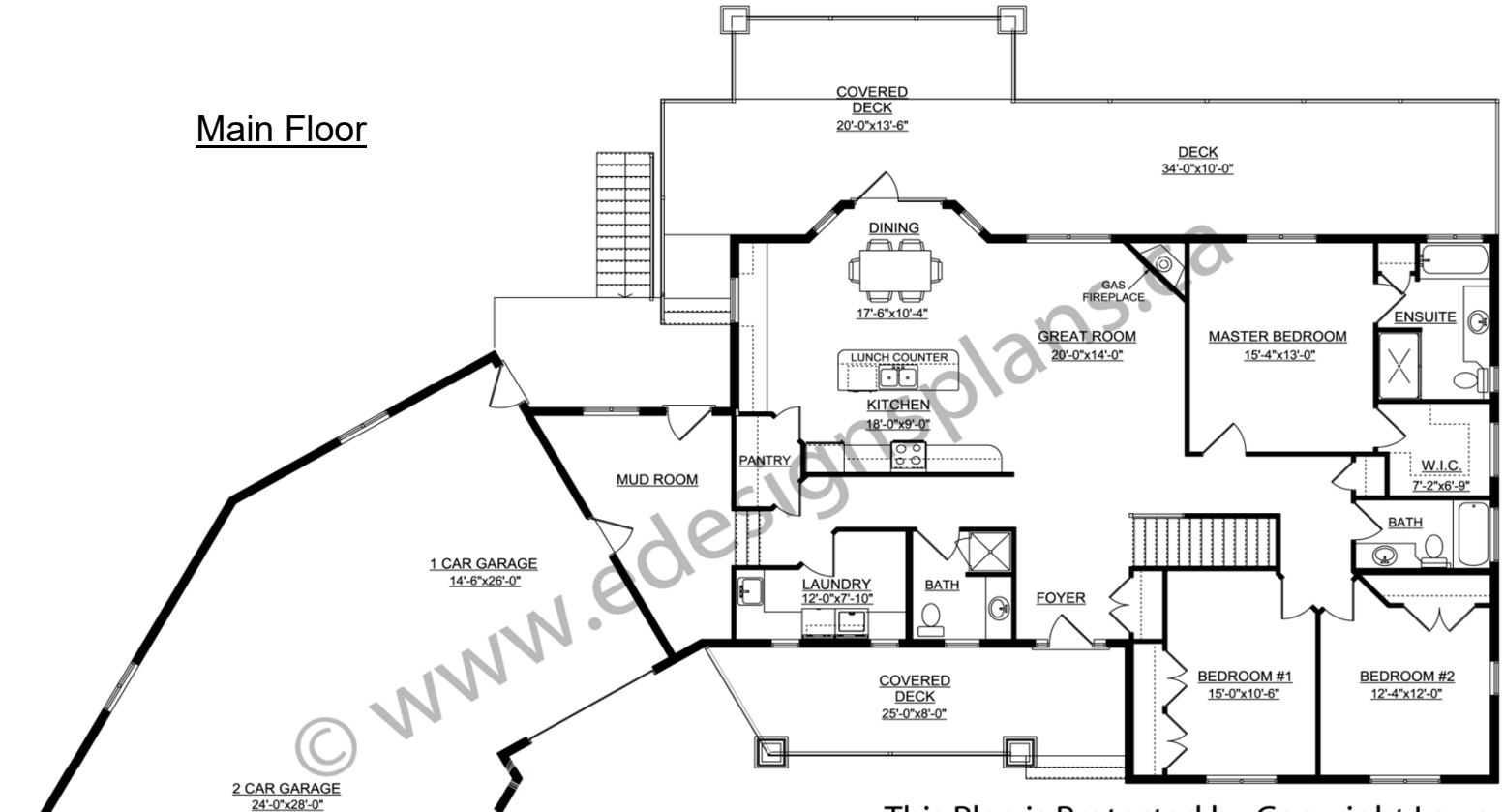
For more information about this plan contact the designer at: info@edesignsplans.ca.

Plan 2014805

www.edesignsplans.ca

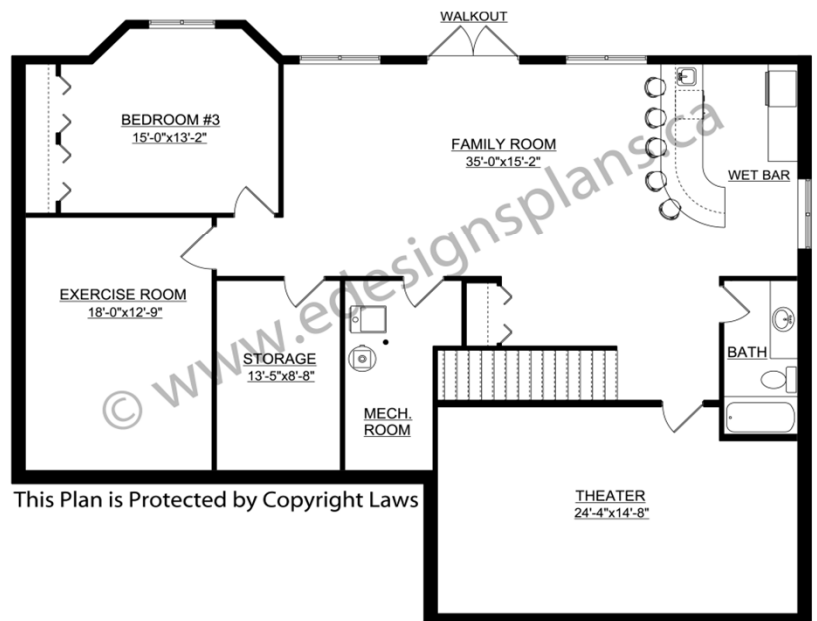
Call Us 1-855-675-1800

Main Floor



This Plan is Protected by Copyright Laws

Basement



This Plan is Protected by Copyright Laws

PROTECTED BY COPYRIGHT LAWS.
PROPERTY OF **E-DESIGNS PLANS INC.**