

E-Designs *Plans Inc.*

A western Canadian company from Alberta that designs and ships home plans all across Canada, the US, and Overseas.

For more information about this plan contact the designer at: info@edesignsplans.ca.

Plan #: 2014812 Front Elevation

www.edesignsplans.ca

[Call Us 1-855-675-1800](tel:1-855-675-1800)



Rear Elevation



Bungalow with 2-Car Garage

1439 Sq. Ft. Main Floor

Width: 43'-0"
 Depth: 62'-0" (plus deck)
 Bedrooms: 4
 Bathrooms: 3
 Main Floor Laundry: Yes
 Walk-in Pantry: Yes
 Flex Room/Office: Yes

Plan #: 2014812

Exterior Walls: 2x6 x 8 Ft. (Main Floor)
 Foundation: 8'-4" Concrete Wall
 (Other Foundations Available)
 Special Ceilings: Vaulted Kitchen/Dining/Great Rm
 Fireplace: No
 Deck(s): Rear (Partially Covered)
 Veranda: Yes
 Attached Garage: Yes (2-Car with 16'x8' Door)
 Finished Basement Plan: Yes

Bungalow with 2-Car Attached Garage. From the dropped front entry, you enter up a couple steps into the great room. The kitchen and dining room are open to each other with a garden door leading to the rear deck, which is partially covered. The U-shaped kitchen has a corner walk-in pantry and a working island. There is a vaulted ceiling over the kitchen, dining, and great room. There are three bedrooms on this floor, along with main floor laundry, and a 3-piece bath. The master suite has a large walk-in closet and a 4-piece ensuite. Downstairs, the basement is developed with a large game/media and recreation room. There is another bedroom on this level, as well as a flex room, a 3-piece bathroom, lots of storage, and even a cold storage room off the family area. All this, and an attached 2-car garage make a great plan for town or country living.

PROTECTED BY COPYRIGHT LAWS.
 PROPERTY OF ***E-DESIGNS PLANS INC.***

E-Designs Plans Inc.

A western Canadian company from Alberta that designs and ships home plans all across Canada, the US, and Overseas.

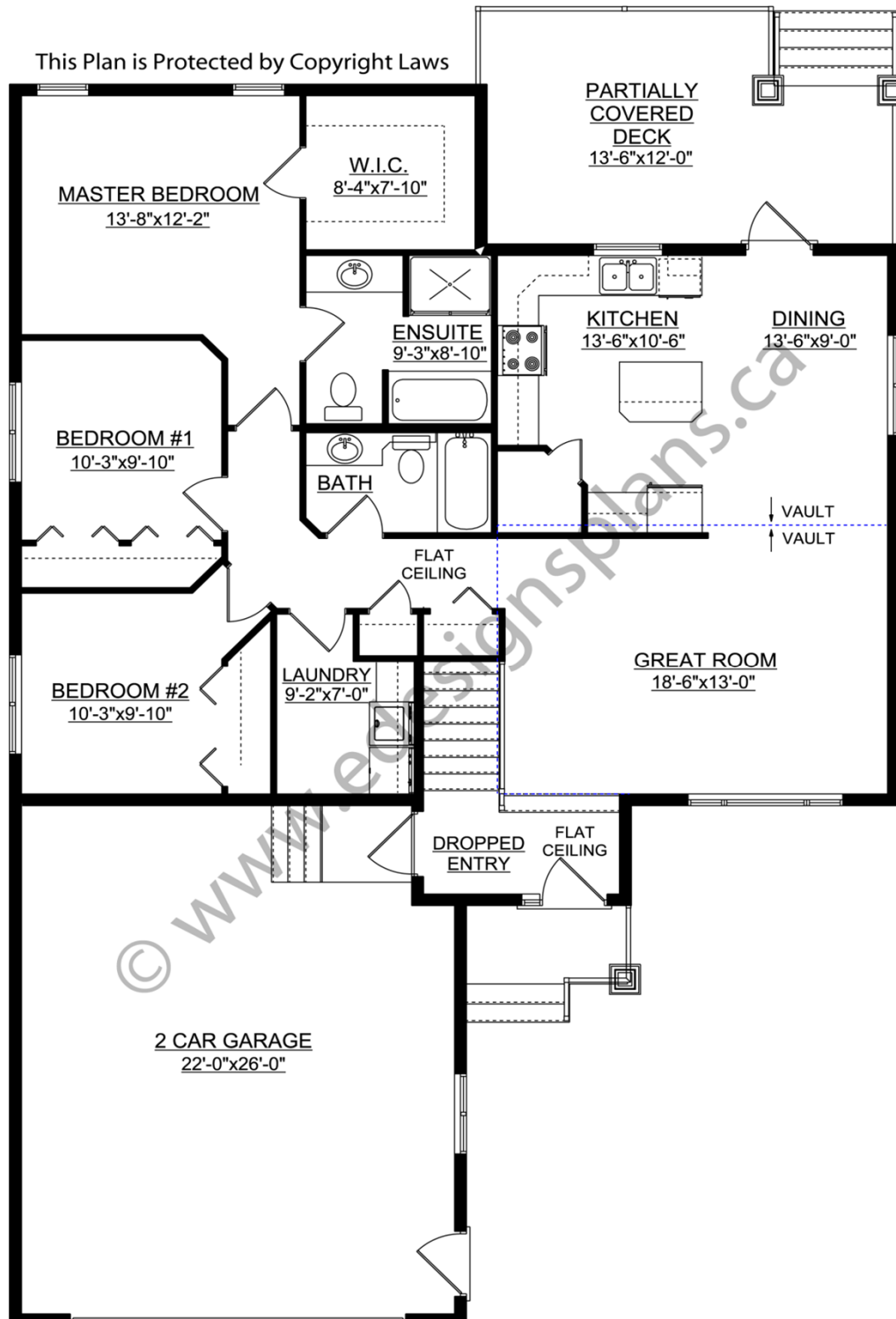
For more information about this plan contact the designer at: info@edesignsplans.ca.

Plan 2014812

www.edesignsplans.ca

Call Us 1-855-675-1800

Main Floor



PROTECTED BY COPYRIGHT LAWS.
PROPERTY OF **E-DESIGNS PLANS INC.**

E-Designs Plans Inc.

A western Canadian company from Alberta that designs and ships home plans all across Canada, the US, and Overseas.

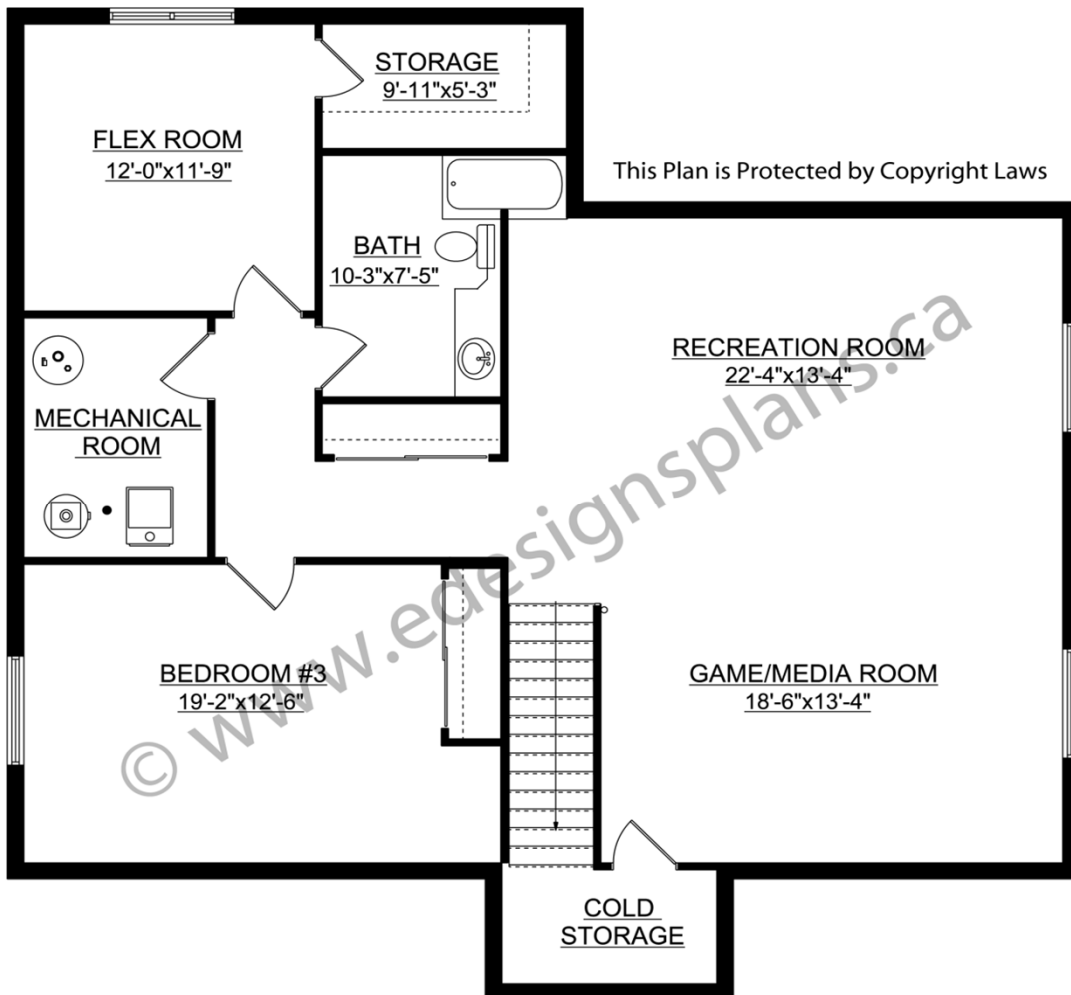
For more information about this plan contact the designer at: info@edesignsplans.ca.

Plan 2014812

www.edesignsplans.ca

[Call Us 1-855-675-1800](tel:1-855-675-1800)

Basement



PROTECTED BY COPYRIGHT LAWS.
PROPERTY OF **E-DESIGNS PLANS INC.**