

E-Designs Plans Inc.

A western Canadian company from Alberta that designs and ships home plans all across Canada, the US, and Overseas.

For more information about this plan contact the designer at: info@edesignsplans.ca.

Plan #: 2014825 Front Elevation

www.edesignsplans.ca

Call Us 1-855-675-1800



Rear Elevation

Bungalow with Walkout & 2-Car Garage

1536 Sq. Ft. Main Floor

Width: 32'-0"
 Depth: 72'-0" (plus deck)
 Bedrooms: 2z
 Bathrooms: 2
 Main Floor Laundry: Yes
 Walk-in Pantry: Yes
 Office/Den: Yes

Plan #: 2014825

Exterior Walls: 2x6 x 9 Ft. (Main Floor)
 Foundation: 9' Concrete Wall
 (Other Foundations Available)
 Special Ceilings: Vaulted Kitchen/Dining/Living Rm
 Fireplace: No
 Deck(s): Rear (Partially Covered)
 Veranda: Yes
 Attached Garage: Yes (2-Car with 9'x8' Doors)
 Finished Basement Plan: No

Bungalow with Walkout & 2-Car Garage. This bungalow would be great for a narrower lot. From the front covered veranda, you enter a foyer with two closets, so lots of space. The main floor bathroom is right around the corner from the foyer. The master suite is immediately on your left. It has a 5-piece ensuite and a walk-through closet which has main floor laundry incorporated, but a working counter. The walk-through closet also leads you to the den in the rear, which also has access from the living room, through a sliding pocket door. Another bedroom is immediately on your right from the foyer as you walk through to the open concept kitchen, dining, and living room, which has a vaulted ceiling. A fireplace is in the living room to enjoy. The L-shaped kitchen has a corner walk-in pantry and working island with the stove built in. Double garden doors lead off the dining room to the rear deck, which is partially covered. This, together with an attached 2-car garage, is all you need for the perfect home. The basement is undeveloped, but is a walkout, so lots of natural lighting, and the patio is partially covered by the deck above. A great plan.

PROTECTED BY COPYRIGHT LAWS.
 PROPERTY OF **E-DESIGNS PLANS INC.**

E-Designs Plans Inc.

A western Canadian company from Alberta that designs and ships home plans all across Canada, the US, and Overseas.

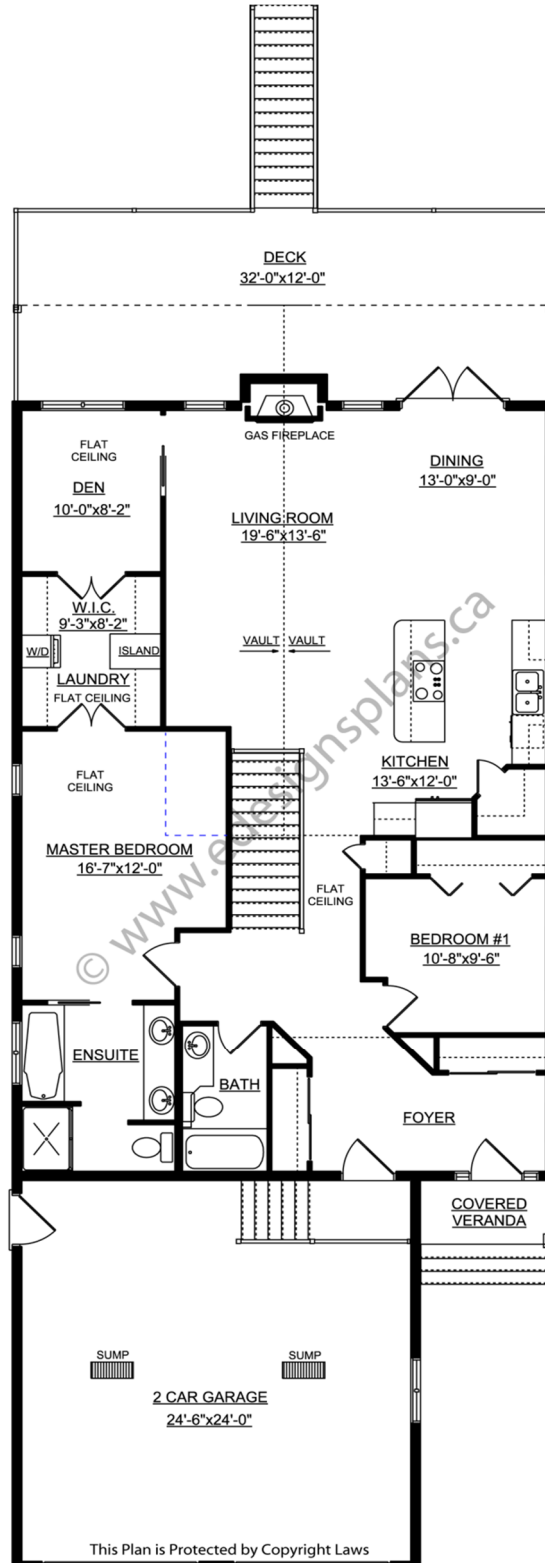
For more information about this plan contact the designer at: info@edesignsplans.ca.

Plan 2014825

www.edesignsplans.ca

[Call Us 1-855-675-1800](tel:1-855-675-1800)

Main Floor



This Plan is Protected by Copyright Laws

PROTECTED BY COPYRIGHT LAWS.
PROPERTY OF **E-DESIGNS PLANS INC.**