

# E-Designs Plans Inc.

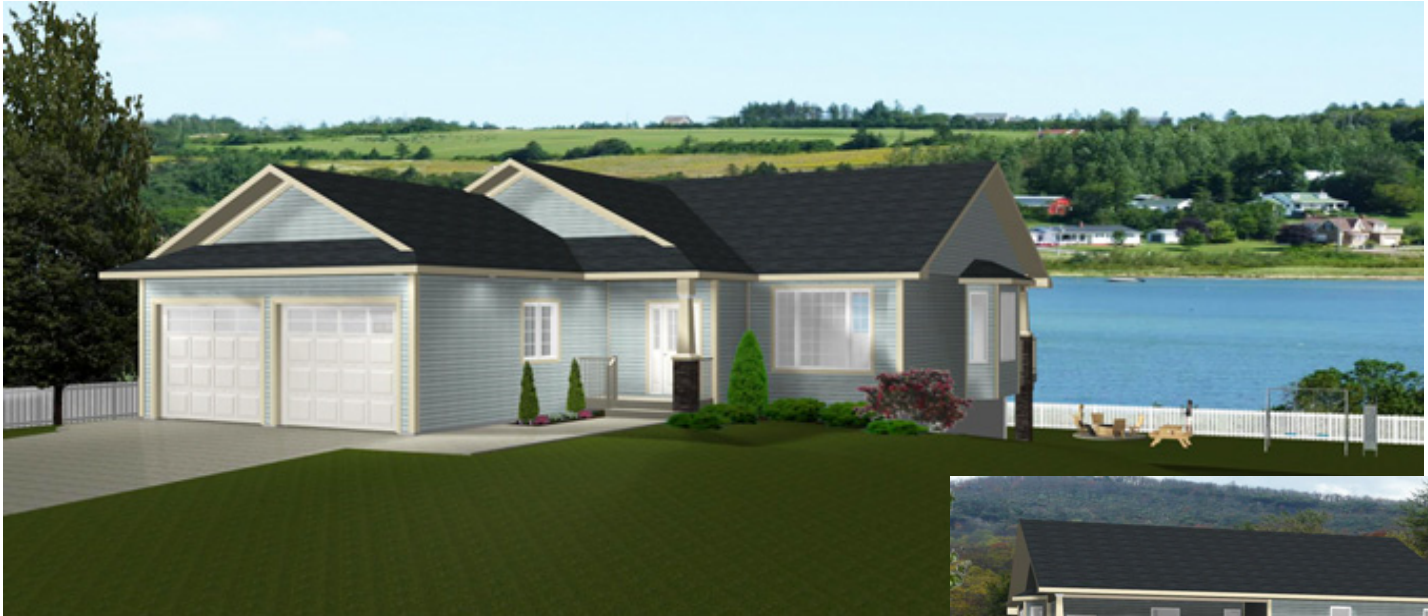
A western Canadian company from Alberta that designs and ships home plans all across Canada, the US, and Overseas.

For more information about this plan contact the designer at: [info@edesignsplans.ca](mailto:info@edesignsplans.ca).

**Plan #: 2014826 Front Elevation**

[www.edesignsplans.ca](http://www.edesignsplans.ca)

**Call Us 1-855-675-1800**



**Rear Elevation**



**Bungalow with Walkout & 2-Car Garage**

1503 Sq. Ft. Main Floor

Width: 47'-0"  
 Depth: 62'-0" (plus deck)  
 Bedrooms: 4  
 Bathrooms: 3  
 Main Floor Laundry: No  
 Walk-in Pantry: Yes  
 Flex Room/Office: Yes

**Plan #: 2014826**

Exterior Walls: 2x6 x 9 Ft. (Main Floor)  
 Foundation: 8'4" ICF (Insulated Concrete Form) (Other Foundations Available)  
 Special Ceilings: Vaulted Kitchen/Dining/Great Rm  
 Fireplace: No  
 Deck(s): Rear (Partially Covered)  
 Veranda: Yes  
 Attached Garage: Yes (2-Car with 10'x8' Doors)  
 Finished Basement Plan: Yes

**Bungalow with Walkout & 2-Car Garage.** Great curb appeal with this bungalow with its 2-car garage, gable roof lines, craftsman style post, and front veranda. Access in from the garage is through a large walk-through mudroom with lots of shelving and closet space, and across from a 3-piece bathroom. Three bedrooms are on the left. The master suite has a 4-piece ensuite and walk-in closet. The great room, kitchen, and dining room are all open concept with a vaulted ceiling above. The dining room is bayed out for additional room and has a garden door leading to the rear deck, which is partially covered. The U-shaped kitchen has a walk-in pantry and small working island. From the main entry, you can proceed downstairs to the finished walkout basement, which has a huge open area with a games/media and a recreation room. Access to the outside patio is off the recreation room. A huge laundry room with a sink and counter space is on this level. An additional bedroom and a flex room with a walk-in closet are accompanied by a 3-piece bath. There is also cold storage off the game/media area, and even more closet space. 1500 square feet of living space, plus the finished basement; lots of room for everyone.

PROTECTED BY COPYRIGHT LAWS.  
 PROPERTY OF **E-DESIGNS PLANS INC.**

# E-Designs Plans Inc.

A western Canadian company from Alberta that designs and ships home plans all across Canada, the US, and Overseas.

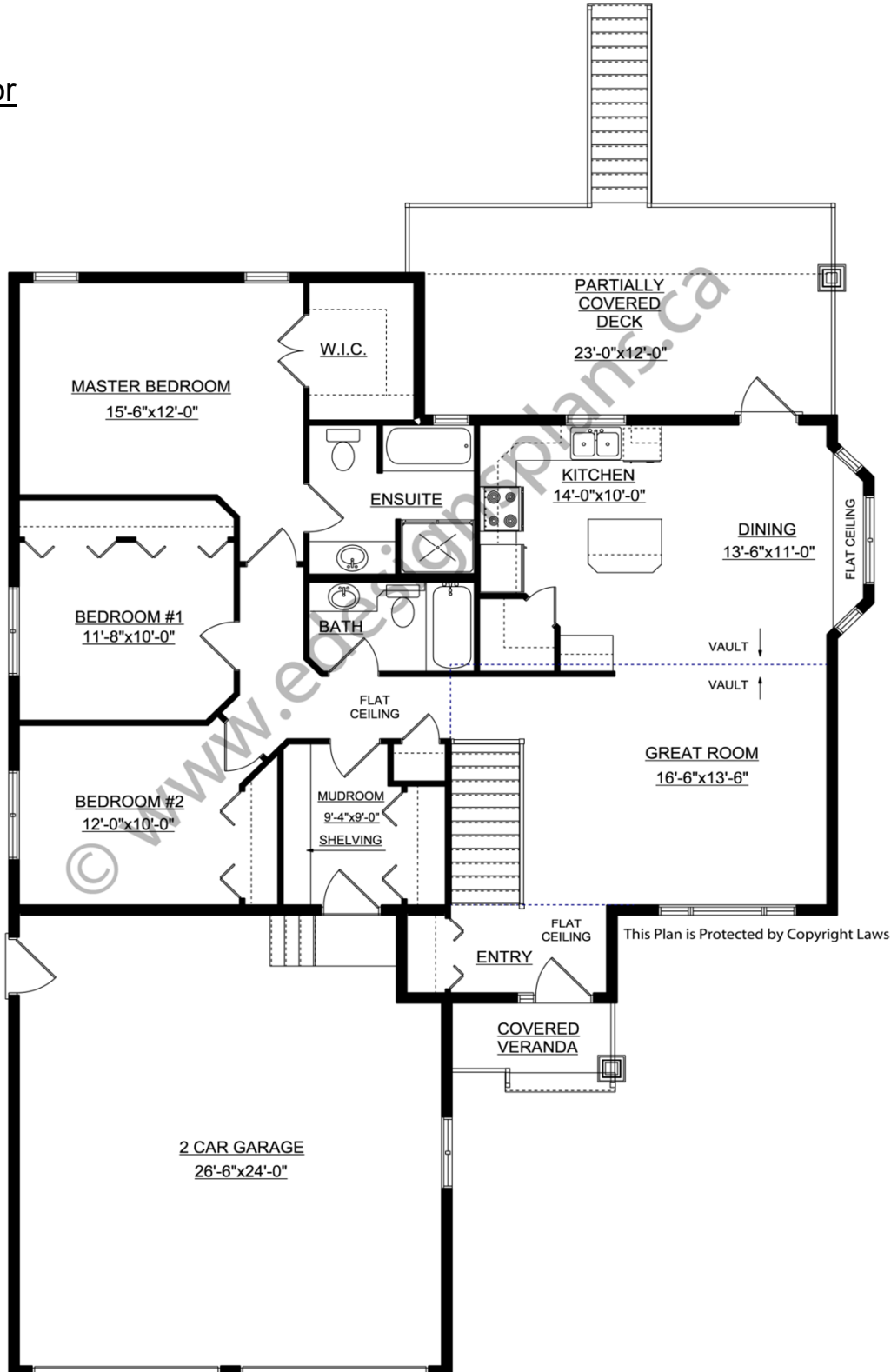
For more information about this plan contact the designer at: [info@edesignsplans.ca](mailto:info@edesignsplans.ca).

Plan 2014826

[www.edesignsplans.ca](http://www.edesignsplans.ca)

Call Us 1-855-675-1800

## Main Floor



PROTECTED BY COPYRIGHT LAWS.  
PROPERTY OF **E-DESIGNS PLANS INC.**

# E-Designs Plans Inc.

A western Canadian company from Alberta that designs and ships home plans all across Canada, the US, and Overseas.

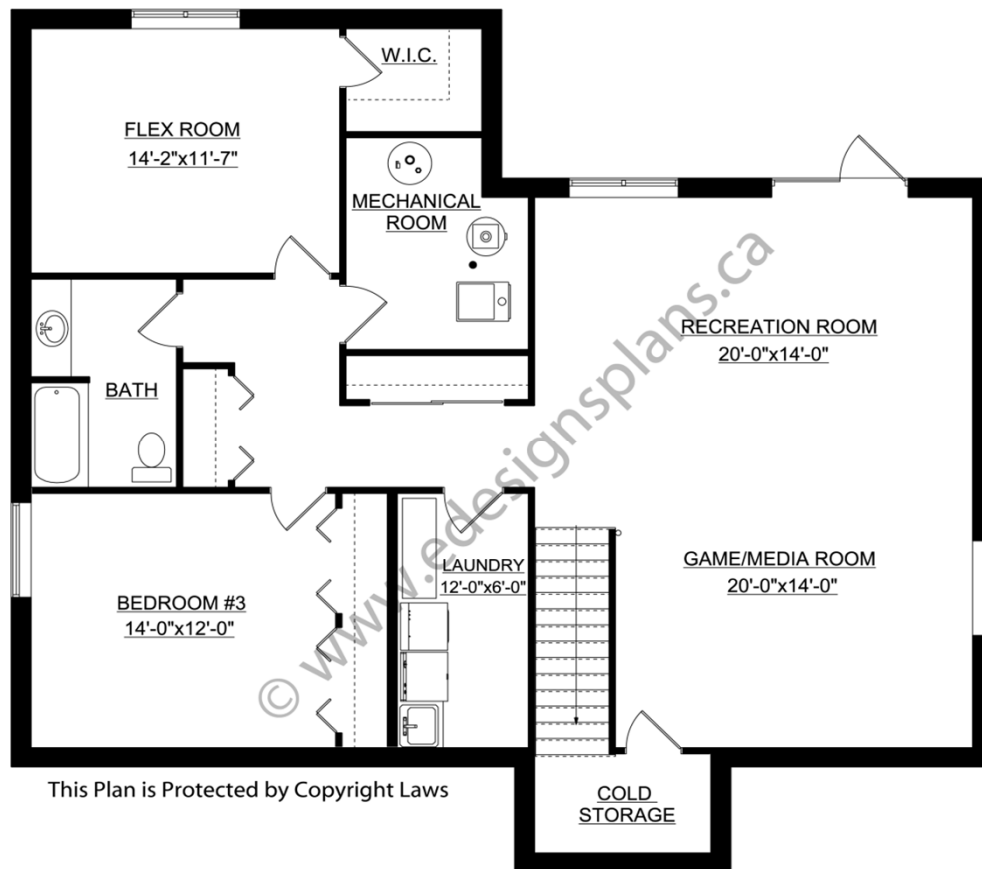
For more information about this plan contact the designer at: [info@edesignsplans.ca](mailto:info@edesignsplans.ca).

Plan 2014826

[www.edesignsplans.ca](http://www.edesignsplans.ca)

[Call Us 1-855-675-1800](tel:1-855-675-1800)

## Basement



This Plan is Protected by Copyright Laws

PROTECTED BY COPYRIGHT LAWS.  
PROPERTY OF **E-DESIGNS PLANS INC.**