

E-Designs *Plans Inc.*

A western Canadian company from Alberta that designs and ships home plans all across Canada, the US, and Overseas.

For more information about this plan contact the designer at: info@edesignsplans.ca.

Plan #: 2014846 Front Elevation

www.edesignsplans.ca

Call Us 1-855-675-1800



Rear Elevation



Bungalow with Walkout & 2-Car Garage

1899 Sq. Ft. Main Floor

Width: 71'-6" (plus deck)
 Depth: 91'-3"
 Bedrooms: 2
 Bathrooms: 2
 Main Floor Laundry: Yes
 Walk-in Pantry: Yes
 Flex Room/Office: Yes

Plan #: 2014846

Exterior Walls: 2x6 x 9 Ft. (Main Floor)
 Foundation: 9' ICF (Insulated Concrete Form) (Other Foundations Available)
 Special Ceilings: 4-Way Vault
 Fireplace: Yes
 Deck(s): Rear (Partially Covered)
 Veranda: No
 Attached Garage: Yes (2-Car with 12'x8' Doors)
 Finished Basement Plan: Yes

Bungalow with Walkout & 2-Car Angled Garage. Almost 1900 square feet of living space on the main level, plus an angled 2-car garage with plenty of room for a work area. The foyer has 11' high ceilings and double french doors to a flex room/office. Walk through two large pillars with arched openings to the great room, kitchen, and nook, which are all one open concept with a 4-way vaulted ceiling. The great room has a fireplace for added warmth, making this large area nice and cozy. A corner pantry and large angled working island borders the kitchen. The nook is bayed out and has double garden doors which lead to the massive rear deck, which is partially covered. You can also access the open deck from the master bedroom through double garden doors. The master suite has a large walk-in closet and huge 5-piece ensuite with custom shower. There is one more bedroom and a 3-piece bathroom on this level as well. Access from the garage is through the laundry room. The basement is undeveloped, but is a walkout, so lots of natural lighting. A great view from the rear of this bungalow from either level. Enjoy the patio off the basement level which is shaded by the deck above.

E-Designs Plans Inc.

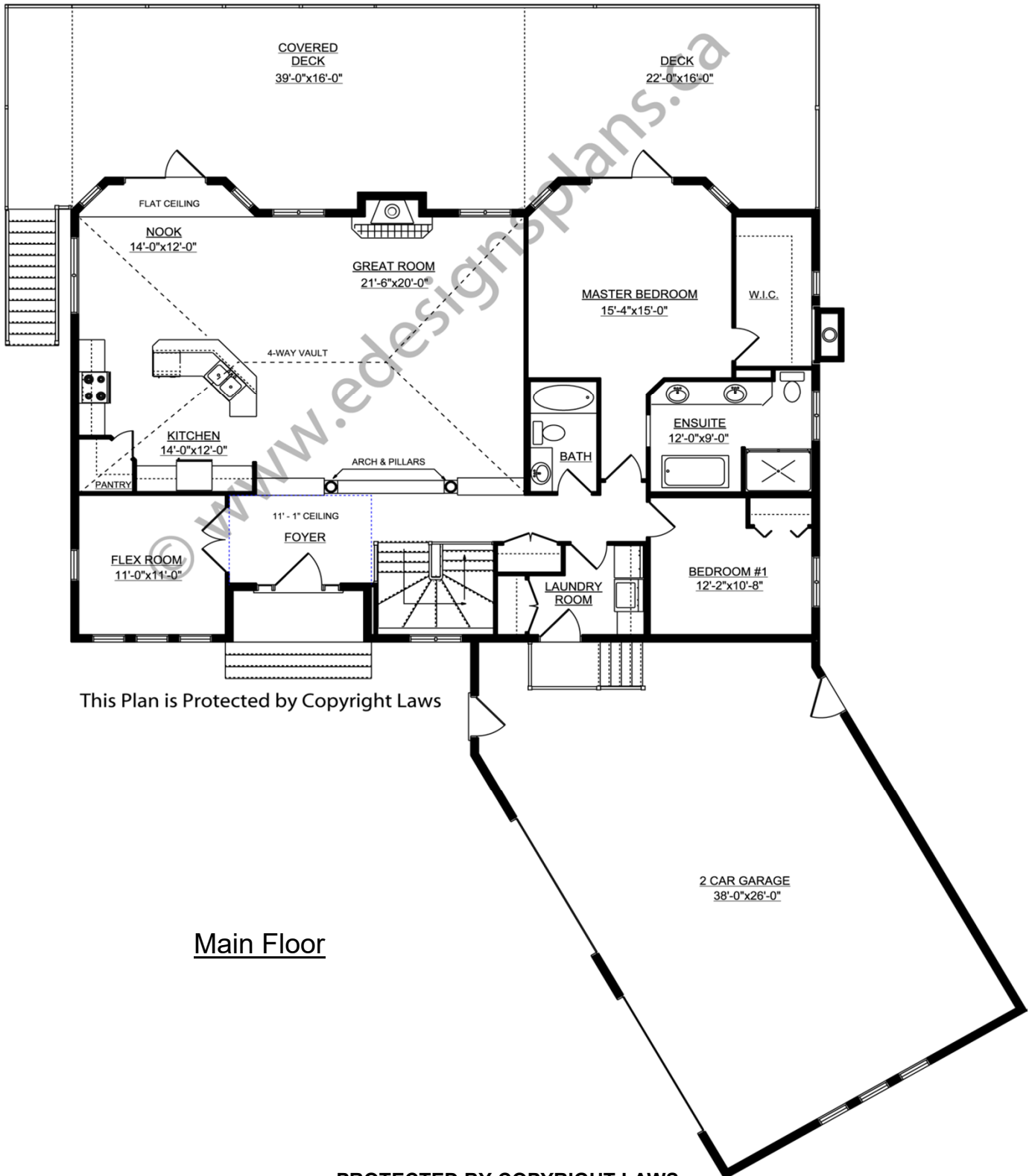
A western Canadian company from Alberta that designs and ships home plans all across Canada, the US, and Overseas.

For more information about this plan contact the designer at: info@edesignsplans.ca.

Plan 2014846

www.edesignsplans.ca

Call Us 1-855-675-1800



This Plan is Protected by Copyright Laws

Main Floor

PROTECTED BY COPYRIGHT LAWS.
PROPERTY OF **E-DESIGNS PLANS INC.**