

# E-Designs Plans Inc.

A western Canadian company from Alberta that designs and ships home plans all across Canada, the US, and Overseas.

For more information about this plan contact the designer at: [info@edesignsplans.ca](mailto:info@edesignsplans.ca).

**Plan #: 2014847 Front Elevation**

[www.edesignsplans.ca](http://www.edesignsplans.ca)

**Call Us 1-855-675-1800**



**Rear Elevation**

**Bungalow with 2-Car Garage & Walkout**  
**1630 Sq. Ft. Main Floor**

Width: 47'-0"  
Depth: 70'-0"  
Bedrooms: 1  
Bathrooms: 2  
Main Floor Laundry: Yes  
Walk-in Pantry: Yes  
Office/Den: Yes

**Plan #: 2014847**

Exterior Walls: 2x6 x 9 Ft. (Main Floor)  
Foundation: 8'-4" ICF (Insulated Concrete Form) (Other Foundations Available)  
Special Ceilings: Coffered Kitchen/Dining/Living Rm  
Fireplace: Yes  
Deck(s): Rear (Partially Covered)  
Veranda: Yes (Covered)  
Attached Garage: Yes (2-Car with 9'x8' Doors)  
Finished Basement Plan: No

**Perfect Bungalow for a Corner Lot.** This bungalow has great curb appeal with its combined cottage and gable roof line plus stone accents. From the front covered corner veranda, you enter the large foyer. Double french doors lead to a den with a corner vault on the right, and the guest bathroom is immediately on the left. The house has 9' ceilings with a 10' coffered ceiling over the kitchen, dining and living room for added appeal. The kitchen has a corner pantry and an angled working island with lunch counter. The dining and living room share a 3-way gas fireplace for those cooler nights. Double garden doors lead from the dining area to the large rear deck, which is partially covered. The master bedroom is also very large and is complemented by a 5-piece ensuite and walk-in closet. Main floor laundry is also accommodated on this level complete with a laundry sink and lots of cabinet space. The stairs to the basement level are just off the kitchen/living room. The basement is undeveloped but is a walkout so lots of natural lighting. An attached 2-car garage has a sump for drainage and lots of length to accommodate a small work area at the front. A beautiful plan!

# E-Designs Plans Inc.

A western Canadian company from Alberta that designs and ships home plans all across Canada, the US, and Overseas.

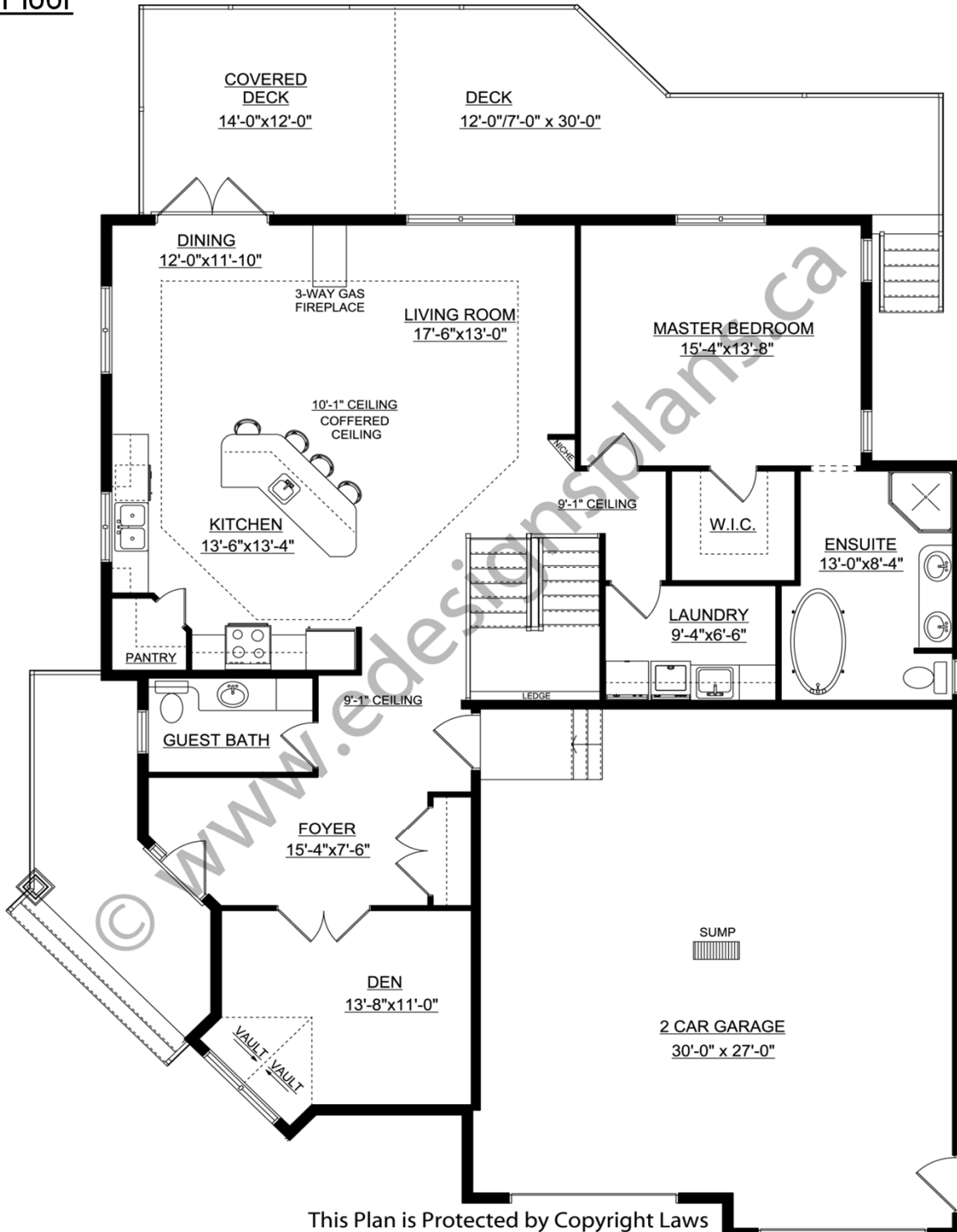
For more information about this plan contact the designer at: [info@edesignsplans.ca](mailto:info@edesignsplans.ca).

Plan 2014847

[www.edesignsplans.ca](http://www.edesignsplans.ca)

Call Us 1-855-675-1800

## Main Floor



This Plan is Protected by Copyright Laws

PROTECTED BY COPYRIGHT LAWS.  
PROPERTY OF **E-DESIGNS PLANS INC.**