

E-Designs Plans Inc.

A western Canadian company from Alberta that designs and ships home plans all across Canada, the US, and Overseas.

For more information about this plan contact the designer at: info@edesignsplans.ca.

Plan #: 2015869 Front Elevation

www.edesignsplans.ca

Call Us 1-855-675-1800



Rear Elevation

Bungalow with 2-Car Garage
1816 Sq. Ft. Main Floor

Width: 72'-0"
Depth: 58'-8" plus deck
Bedrooms: 3
Bathrooms: 4
Main Floor Laundry: Yes
Walk-in Pantry: No
Office/Den/Flex Room: Yes

Plan #: 2015869

Exterior Walls: 2x6 x 9 Ft. (Main Floor)
Foundation: 9' Concrete Wall
(Other Foundations Available)
Special Ceilings: None
Fireplace: Yes
Deck(s): Rear (Covered)
Veranda: Yes
Attached Garage: Yes (2-Car - 12'x8' & 10'x8' Doors)
Finished Basement Plan: Yes

Bungalow with 2-Car Attached Garage. The front covered veranda wraps around the side and has 4 craftsman style posts supporting the roof. The stonework on the front and trim on the garage ties together with the posts. The rear deck is partially covered and also has a matching post for roof support. The foyer is open and flows right into the open concept kitchen, dining and great room area. A fireplace and entertainment centre is built into the wall beside the stairs. The kitchen has a large island and a garden door leads out to the rear deck from the dining area. An archway in the corner of the great room leads to the master bedroom, complete with ensuite and walk-in closet. The laundry is tucked away in this area, as well as the office, so you can work quietly. The office is large with a separate area for filing cabinets and access to the wrap around veranda on the side. If you enter from the garage, there is a large mudroom plus another bathroom closeby for convenience when coming in from outside. The garage has a larger 12' door plus a 10' door. Downstairs is a large recreation room, mechanical room, lots of storage, two more bedrooms that share a bathroom, and an exercise room with its own bathroom. The basement design has a full kitchen and dining room as well, and could easily be made into a rental suite by adding a separate entrance.

PROTECTED BY COPYRIGHT LAWS.
PROPERTY OF **E-DESIGNS PLANS INC.**

E-Designs Plans Inc.

A western Canadian company from Alberta that designs and ships home plans all across Canada, the US, and Overseas.

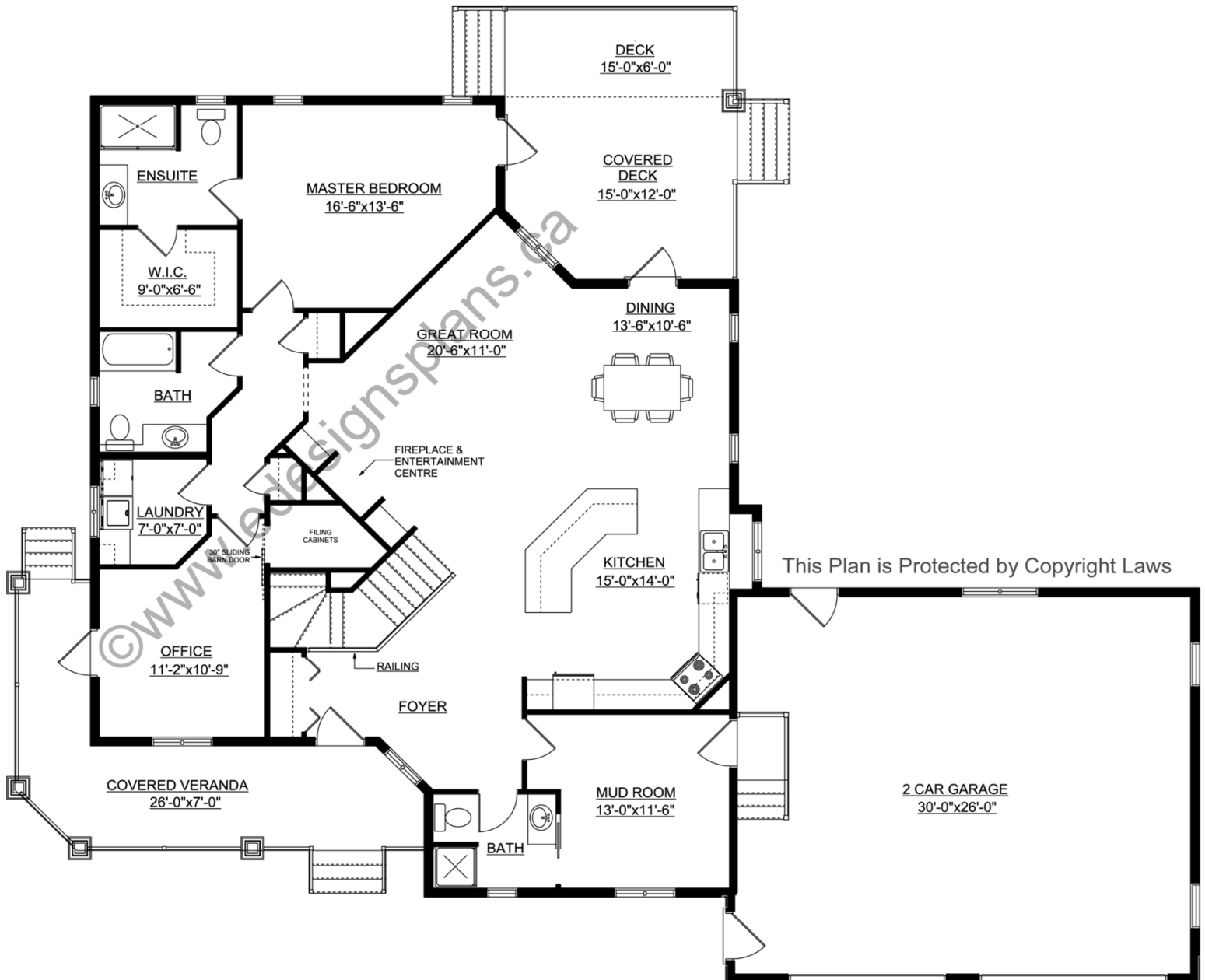
For more information about this plan contact the designer at: info@edesignsplans.ca.

Plan 2015869

www.edesignsplans.ca

Call Us 1-855-675-1800

Main Floor



PROTECTED BY COPYRIGHT LAWS.
PROPERTY OF **E-DESIGNS PLANS INC.**

E-Designs Plans Inc.

A western Canadian company from Alberta that designs and ships home plans all across Canada, the US, and Overseas.

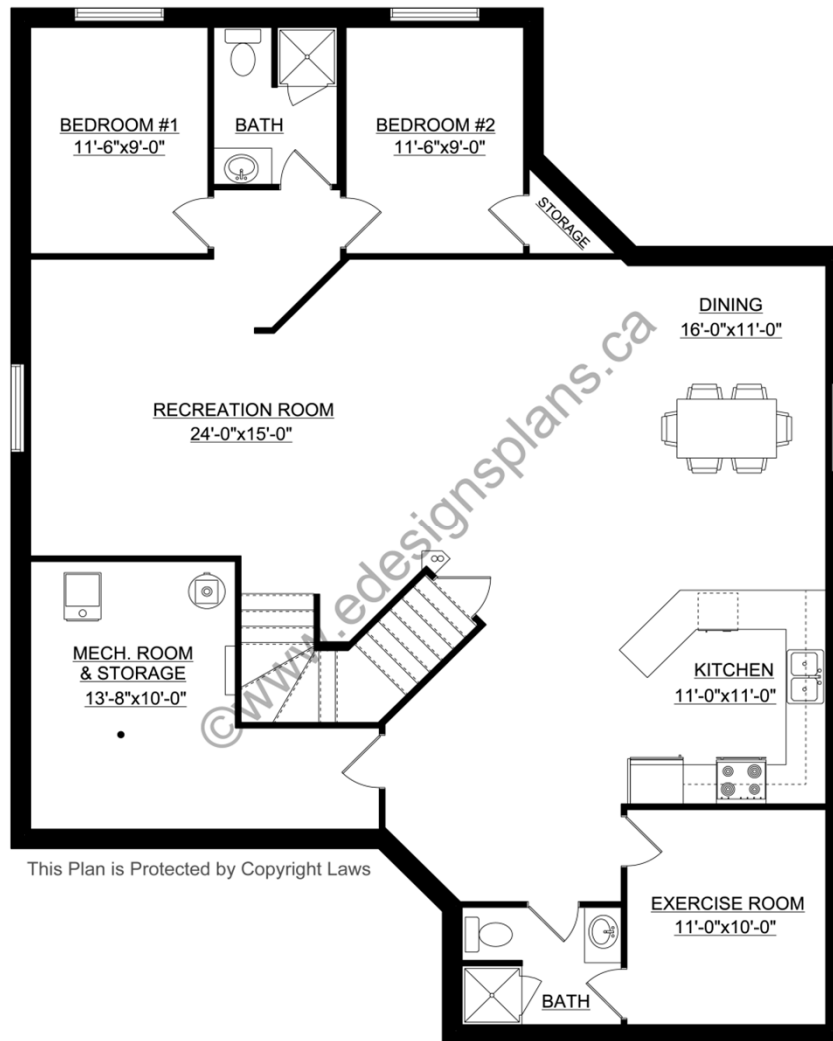
For more information about this plan contact the designer at: info@edesignsplans.ca.

Plan 2015869

www.edesignsplans.ca

Call Us 1-855-675-1800

Basement



This Plan is Protected by Copyright Laws

PROTECTED BY COPYRIGHT LAWS.
PROPERTY OF **E-DESIGNS PLANS INC.**