

E-Designs Plans Inc.

A western Canadian company from Alberta that designs and ships home plans all across Canada, the US, and Overseas.

For more information about this plan contact the designer at: info@edesignsplans.ca.

Plan #: 2016924 Front Elevation

www.edesignsplans.ca

[Call Us 1-855-675-1800](tel:1-855-675-1800)



Rear Elevation

Bungalow with Triple Car Garage

1484 Sq. Ft. Main Floor

Width: 53'-6"
 Depth: 56'-0" plus deck
 Bedrooms: 3
 Bathrooms: 3
 Main Floor Laundry: Yes
 Walk-in Pantry: Yes
 Office/Den: Yes

Plan #: 2016924

Exterior Walls: 2x6 x 9 Ft. (Main Floor)
 Foundation: 9' ICF (Insulated Concrete Form) (Other Foundations Available)
 Special Ceilings: Vaulted Kitchen, Dining & Living Rm
 Fireplace: No
 Deck(s): Rear (Covered)
 Veranda: No
 Attached Garage: Yes (3-Car with 9'x8' Doors)
 Finished Basement Plan: Yes

Bungalow with Triple Car Garage. An open concept bungalow with the kitchen, dining and living rooms all vaulted. A large working island in the kitchen accommodates an eating bar as well. Lots of counter space and a pantry in the corner. French doors lead outside to the covered deck in the rear. The master bedroom has a treyed ceiling, a 4-piece ensuite, and large walk-in closet. Laundry is located right beside the master bedroom for added convenience. A den and guest bath is located right off the front foyer. The front entrance is covered, or enter from the triple car garage into the same area. The garage has lots of space and a smaller 6'X8' door facing the backyard so you can drive a smaller tractor, lawn mower, or ATV in for storage from the rear. Downstairs, the basement is designed with a large family room, separate games/media room, and two more bedrooms that share a 3-piece bath. The mechanical room is large enough to accommodate a storage area as well.

E-Designs Plans Inc.

A western Canadian company from Alberta that designs and ships home plans all across Canada, the US, and Overseas.

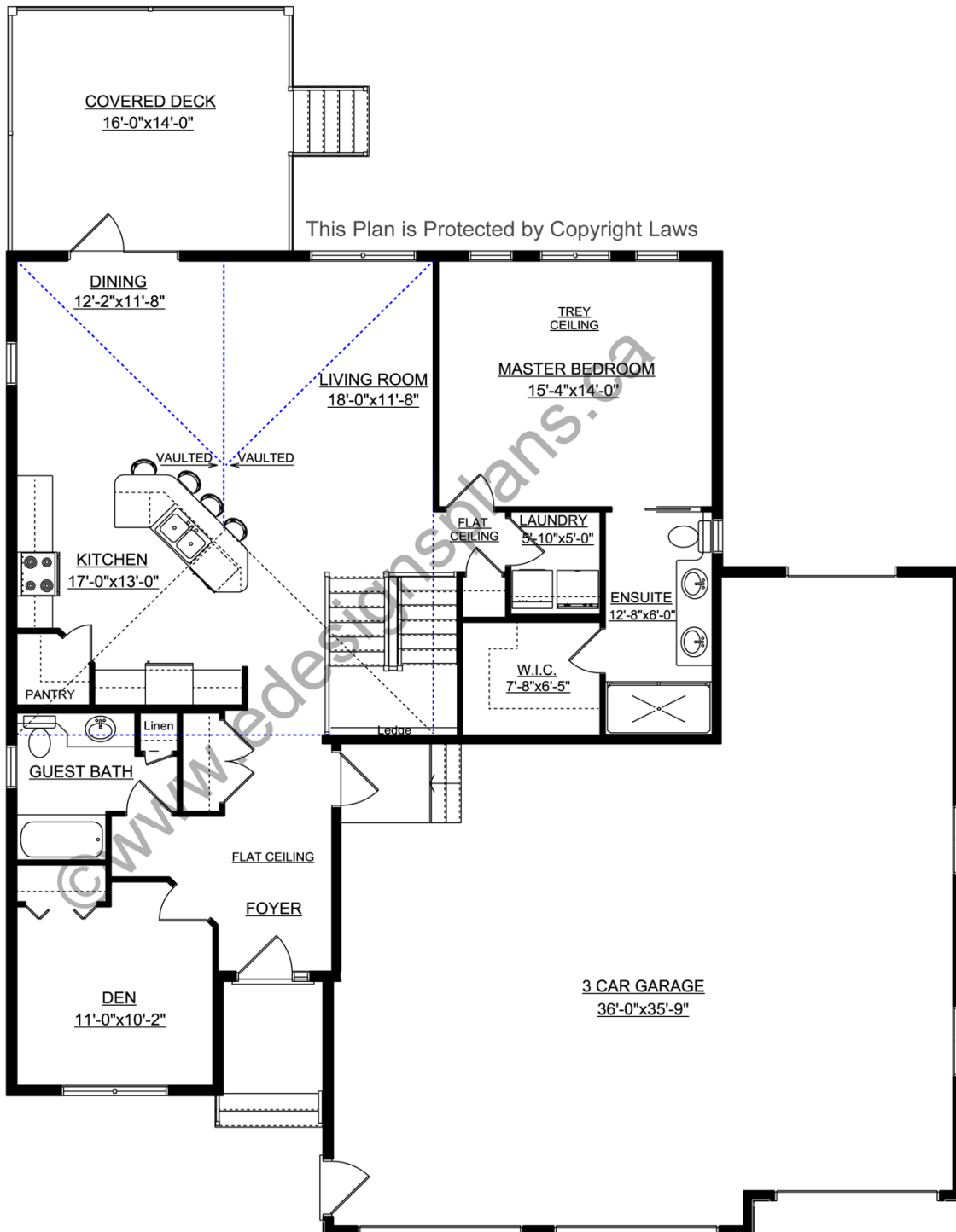
For more information about this plan contact the designer at: info@edesignsplans.ca.

Plan 2016924

www.edesignsplans.ca

[Call Us 1-855-675-1800](tel:1-855-675-1800)

Main Floor



PROTECTED BY COPYRIGHT LAWS.
PROPERTY OF **E-DESIGNS PLANS INC.**

E-Designs Plans Inc.

A western Canadian company from Alberta that designs and ships home plans all across Canada, the US, and Overseas.

For more information about this plan contact the designer at: info@edesignsplans.ca.

Plan 2016924

www.edesignsplans.ca

[Call Us 1-855-675-1800](tel:1-855-675-1800)

Basement

