

# E-Designs Plans Inc.

A western Canadian company from Alberta that designs and ships home plans all across Canada, the US, and Overseas.

For more information about this plan contact the designer at: [info@edesignsplans.ca](mailto:info@edesignsplans.ca).

**Plan #: 2017112 Front Elevation**

[www.edesignsplans.ca](http://www.edesignsplans.ca)

[Call Us 1-855-675-1800](tel:1-855-675-1800)



**Rear Elevation**

**Bungalow Plan**

1760 Sq. Ft. Main Floor

Width: 58'-0"  
 Depth: 38'-0" Plus Deck  
 Bedrooms: 5  
 Bathrooms: 3  
 Main Floor Laundry: Yes  
 Walk-in Pantry: Yes  
 Office/Den: No

**Plan #: 2017112**

Exterior Walls: 2x6 x 9 Ft. (Main Floor)  
 Foundation: 9' ICF (Insulated Concrete Form) (Other Foundations Available)  
 Special Ceilings: Vaulted Kitchen, Dining & Great Rm  
 Fireplace: Yes  
 Deck(s): Rear (Partially Covered)  
 Veranda: Yes (Covered)  
 Attached Garage: No  
 Finished Basement Plan: Yes

**Bungalow Plan.** This bungalow has a front veranda that runs the full length of the house and wraps around the left side, bordered by support posts giving it that country-style look. Enter into the great room, which has a fireplace centered on the side wall. The great room, kitchen and dining room are open concept with a vaulted ceiling making this space look very large. The kitchen has a small island and a pantry in the corner. Double french doors lead from the dining room to the rear deck, which is partially covered. There is another entrance on the side which takes you directly into the mudroom, laundry room area. Lots of closet space here. There are three bedrooms on this level, so everything you need is on one level. The master bedroom has a walk-in closet and 4-piece ensuite. The other two bedrooms share a 3-piece bathroom. Downstairs are two more bedrooms and another 3-piece bathroom, plus a large recreation room with full wet bar. A large mechanical room is behind the stairs, and a cold storage room has been built under the mudroom for garden vegetables, canning, and/or storage. Great for the farm or acreage.

# E-Designs Plans Inc.

A western Canadian company from Alberta that designs and ships home plans all across Canada, the US, and Overseas.

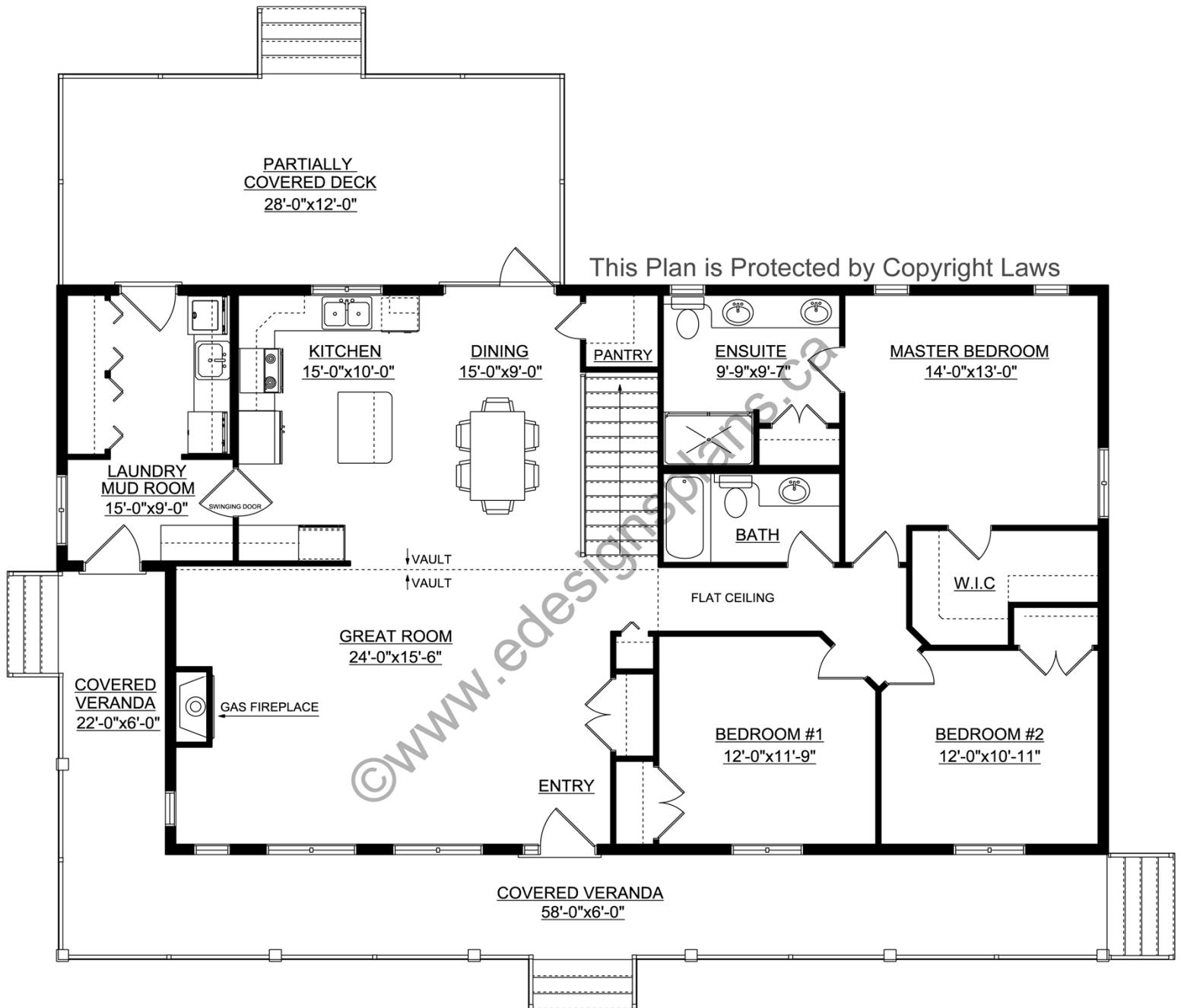
For more information about this plan contact the designer at: [info@edesignsplans.ca](mailto:info@edesignsplans.ca).

Plan 2017112

[www.edesignsplans.ca](http://www.edesignsplans.ca)

[Call Us 1-855-675-1800](tel:1-855-675-1800)

## Main Floor



PROTECTED BY COPYRIGHT LAWS.  
PROPERTY OF **E-DESIGNS PLANS INC.**

# E-Designs Plans Inc.

A western Canadian company from Alberta that designs and ships home plans all across Canada, the US, and Overseas.

For more information about this plan contact the designer at: [info@edesignsplans.ca](mailto:info@edesignsplans.ca).

Plan 2017112

[www.edesignsplans.ca](http://www.edesignsplans.ca)

[Call Us 1-855-675-1800](tel:1-855-675-1800)

## Basement

This Plan is Protected by Copyright Laws

